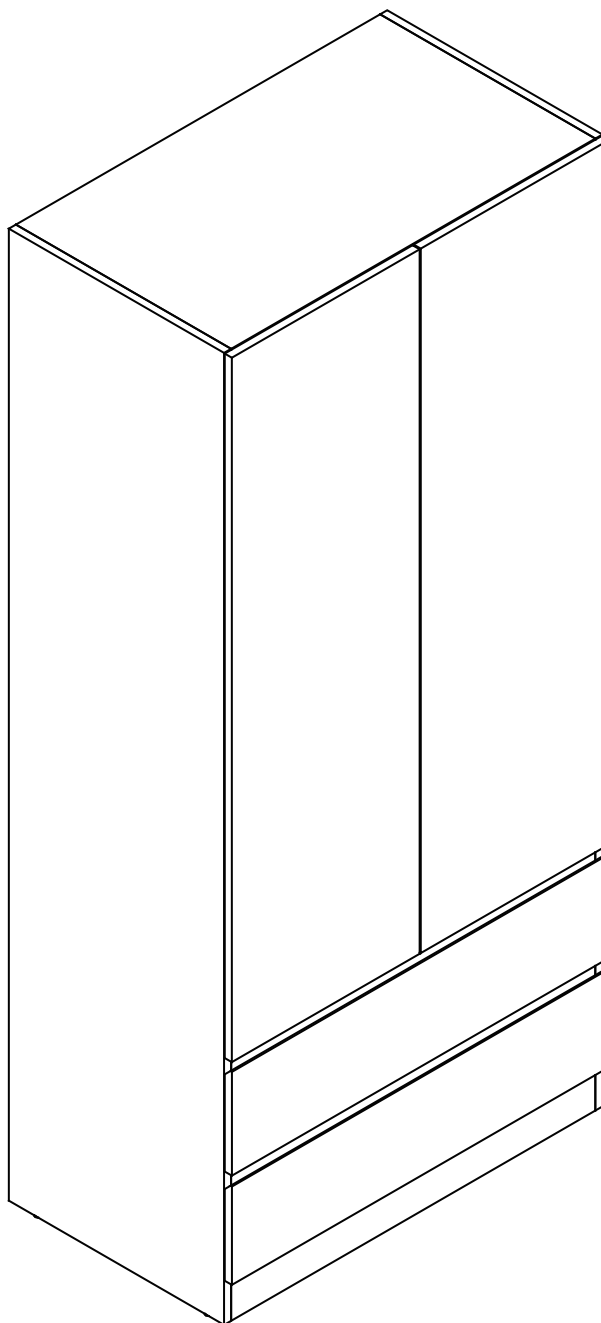


APPROVED LP 02/03/21

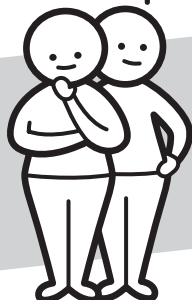


**Fantastic
Furniture**

Version 1.0



Two People



Required

Como
Robe 2 Door

fantasticfurniture.com.au

Recommended weight capacity : 18kgs /Drawer.



**WARNING: ENSURE THE WALL STRAP IS ATTACHED TO
AVOID SERIOUS INJURY.**

To avoid any serious or fatal injury, this product has been supplied with a wall strap to prevent toppling. We strongly recommend that this product is permanently fixed to the wall or other suitable surface. Connecting attachments for your wall are not included since different surface materials require different attachments. Please seek professional advice if you are in doubt of what wall connections to use.

Looks like you've found your Fantastic!

We're thrilled you've chosen Fantastic Furniture
to help create a home you'll love!



Fantastic Furniture

Love it? Share it!

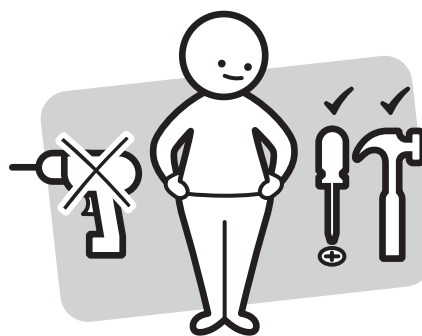
Fantastic buy! Share how it looks at home on Instagram for
your chance to win a \$250 Fantastic Furniture Gift Card!

@fantasticfurniture

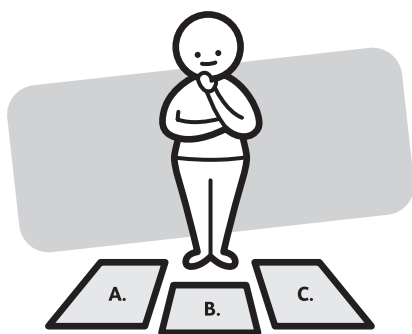
Assembly Checklist



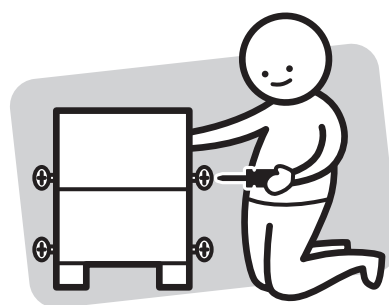
Read through the instructions carefully before you begin.



Make sure you have all the required tools. Never use power tools unless instructed.



Identify and lay out all of the components before you begin assembly.



Unless instructed, do not fully tighten screws until the item is fully assembled.

Useful Information

- ! Never use power tools unless specifically instructed. They can damage your components or hardware if used incorrectly.
- ! The most common mistakes made during assembly are using the wrong hardware or getting components back to front.
- ! Always use a soft surface (such as carpet or cardboard) when assembling your product to avoid scratching or damaging the surface of the product.
- ! Bulky items such as wardrobes and bunk beds should be assembled in the room they will be used in as they may not fit through a door once assembled.
- ! Never use any glue until you are certain that the parts belong together.
- ! Periodically check and re-tighten all fasteners. Check the product care label or website for product care instructions.
- ! If you are having any difficulties assembling your product, missing any hardware or components please visit our website Help Centre for further assistance.
- ! Please see page 2 for any safety requirements or weight restrictions.

What you need

to assemble the product



DO NOT USE

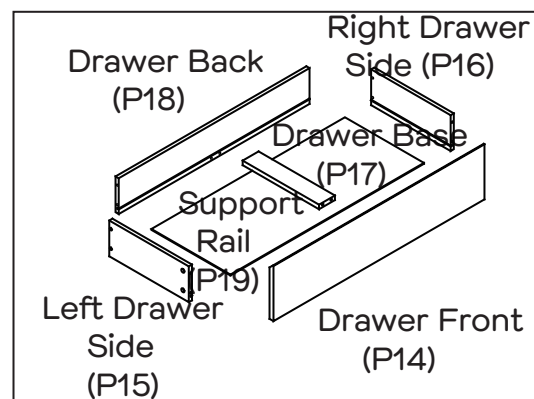
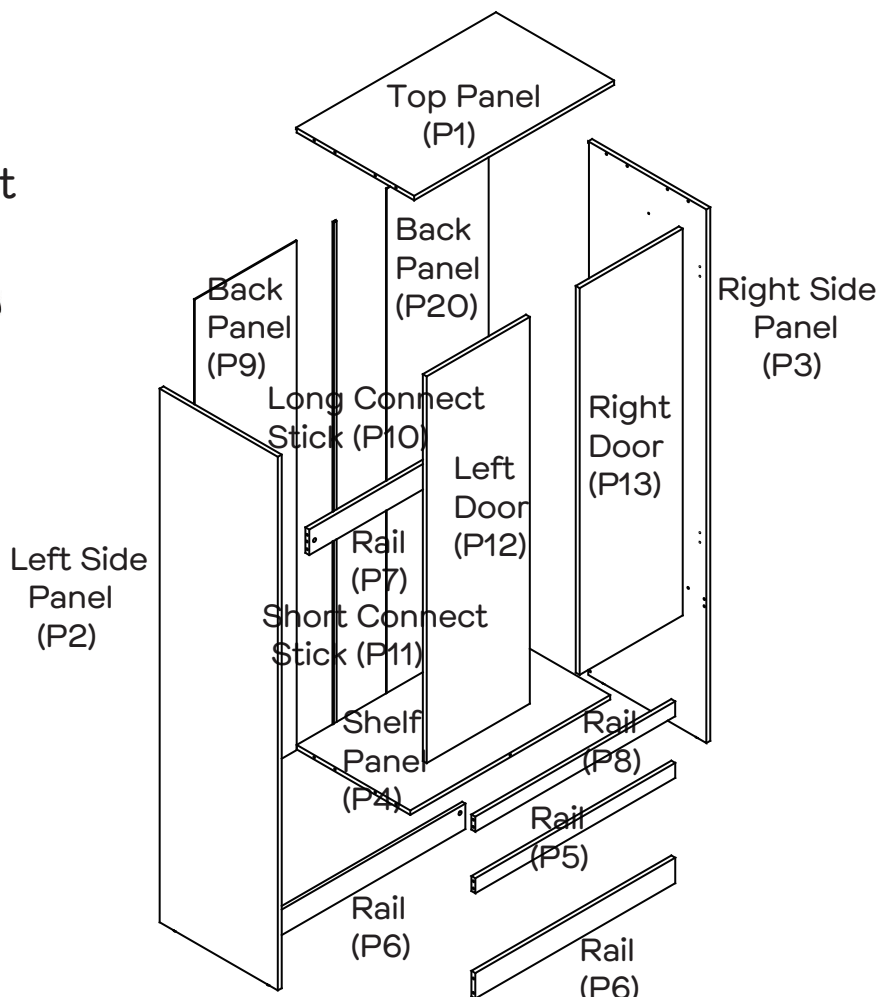


Other tools you need:

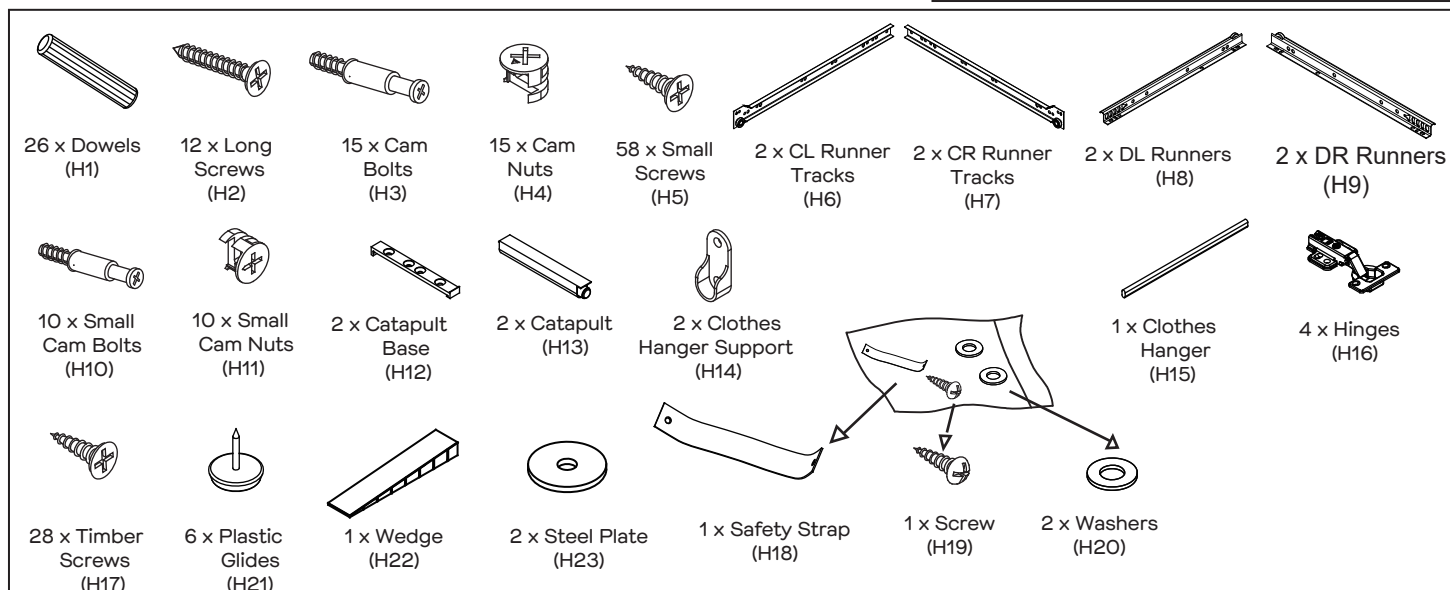
Phillips head screwdriver;
Hammer

Parts list


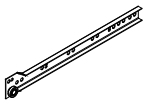
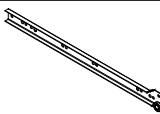

Top Panel (P1);
Left Side Panel (P2);
Right Side Panel (P3);
Shelf Panel (P4);
Rail (P5); 2 x Rails (P6);
Rail (P7); Rail (P8);
Back Panel (P9);
Long Connect Stick (P10);
Short Connect Stick (P11);
Left Door (P12);
Right Door (P13);
2 x Drawer Fronts (P14);
2 x Left Drawer Sides (P15);
2 x Right Drawer Sides (P16);
2 x Drawer Bases (P17);
2 x Drawer Backs (P18);
2 x Support Rails (P19)

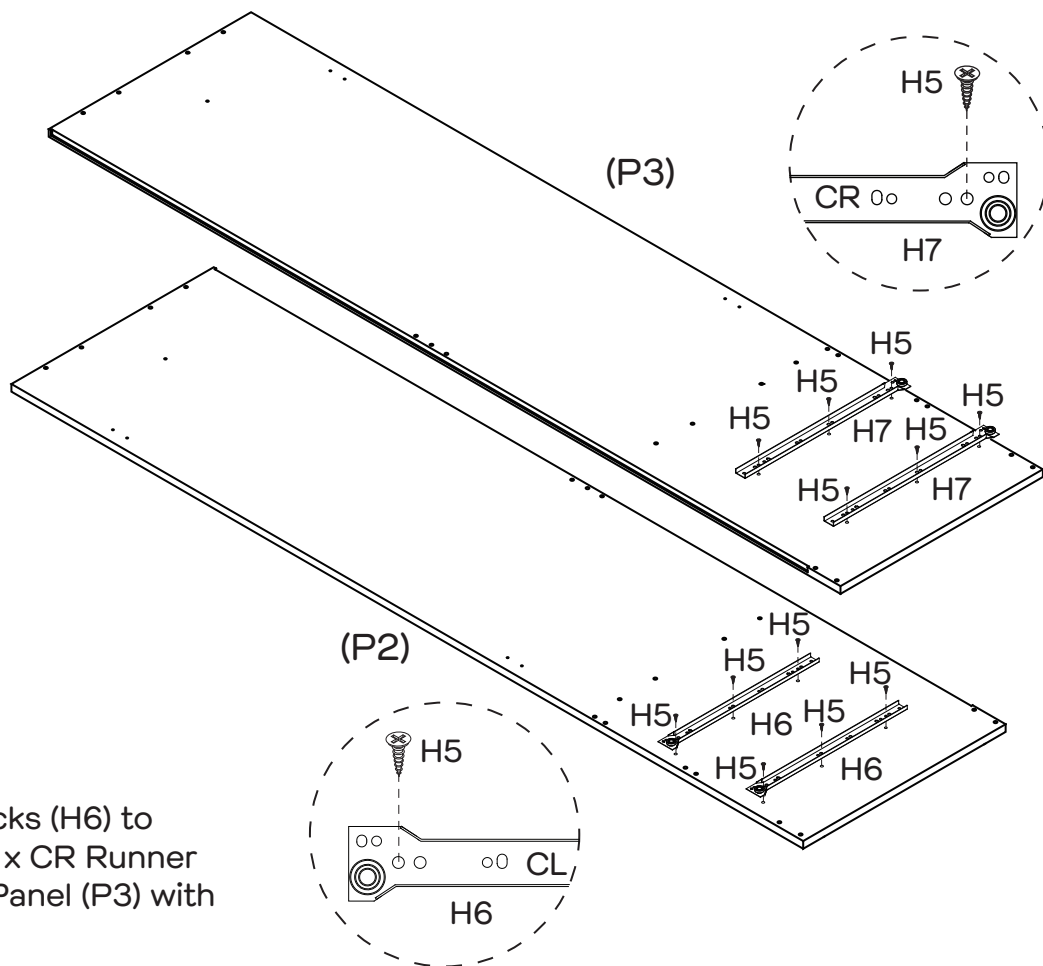


Hardware pack



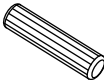
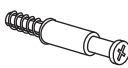

Step 1

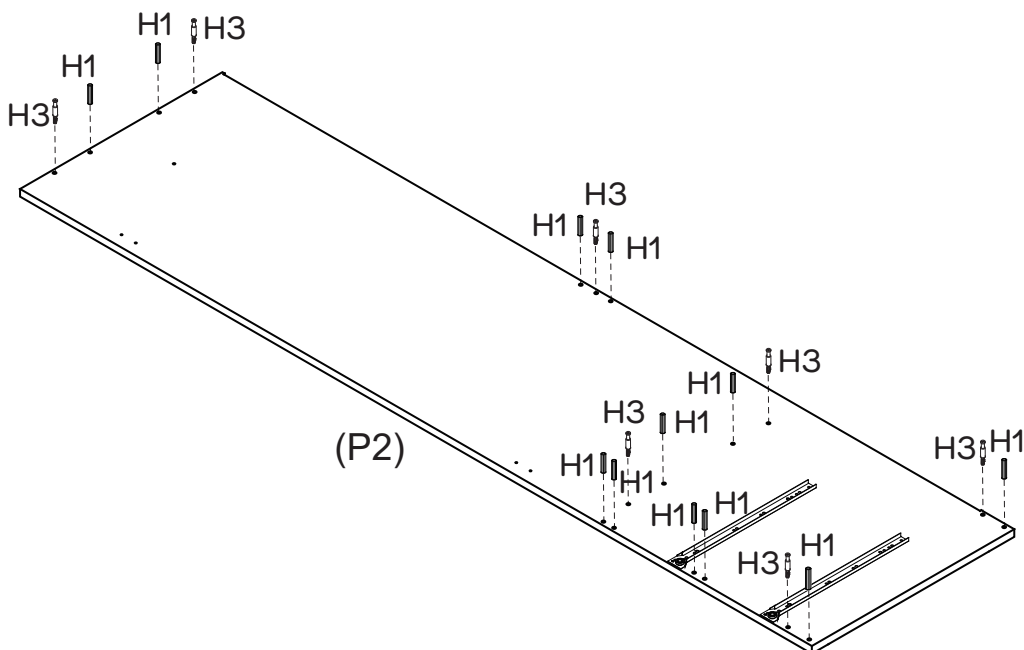
You will need	
	
12 x Small Screws (H5)	2 x CL Runner Tracks (H6)
	
2 x CR Runner Tracks (H7)	Phillips Head Screwdriver



Attach 2 x CL Runner Tracks (H6) to Left Side Panel (P2) and 2 x CR Runner Tracks (H7) to Right Side Panel (P3) with 12 x Small Screws (H5).

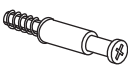

Step 2

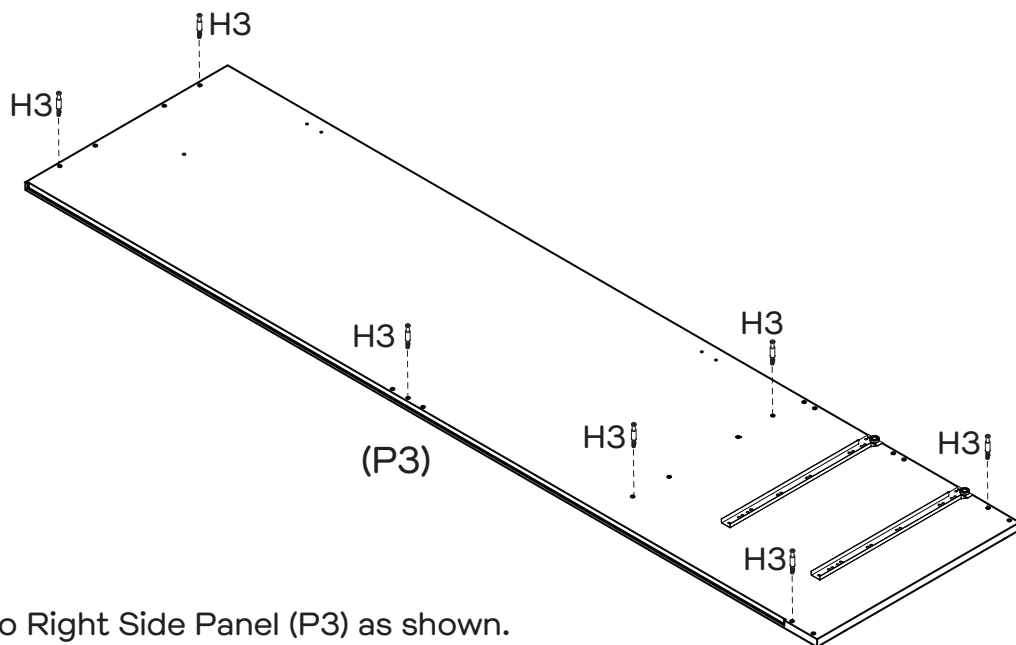
You will need	
	
12 x Dowels (H1)	7 x Cam Bolts (H3)
	
Phillips Head Screwdriver	



Insert 12 x Dowels (H1) into Left Side Panel (P2).
Attach 7 x Cam Bolts (H3) to Left Side Panel (P2) as shown.

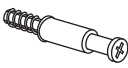


Step 3

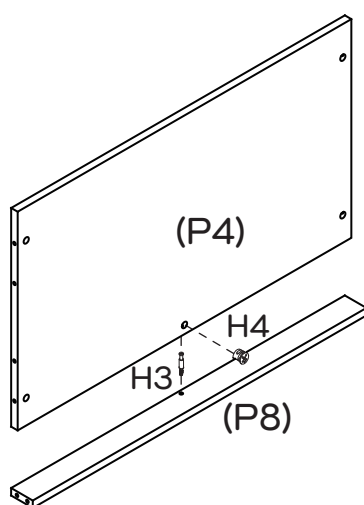
You will need	
	
7 x Cam Bolts (H3)	Phillips Head Screwdriver



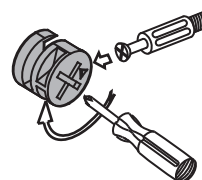
Attach 7 x Cam Bolts (H3) to Right Side Panel (P3) as shown.

Step 4

You will need	
	
1 x Cam Bolt (H3)	1 x Cam Nut (H4)
	
Phillips Head Screwdriver	



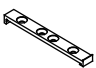
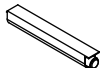


This is how a cam nut works.....

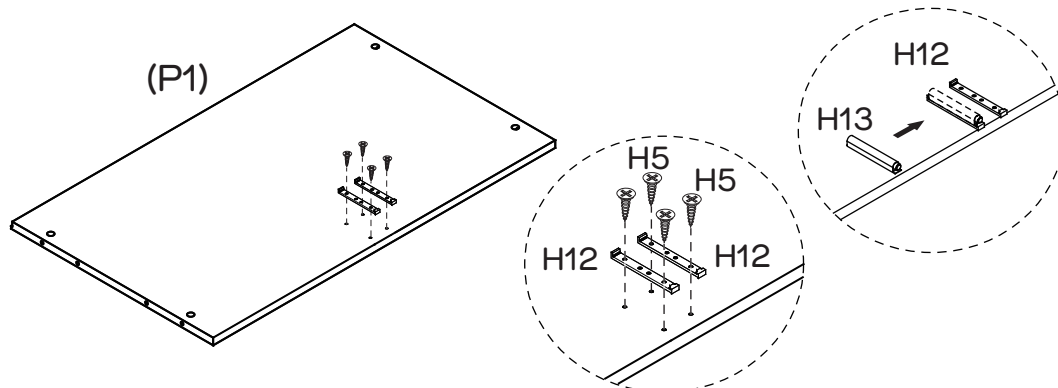


The head of the cam bolt goes into the open mouth of the cam nut. You then turn the cam nut so it tightens over the bolt.

Attach 1 x Cam Bolt (H3) into the hole of Rail (P8) as shown.
Insert 1 x Cam Nut (H4) into the hole of Shelf Panel (P4).
Rotate the cam nuts so the arrows point towards the incoming cam bolt.
Push Shelf Panel (P4) into place and tighten the cam nut.



Step 5

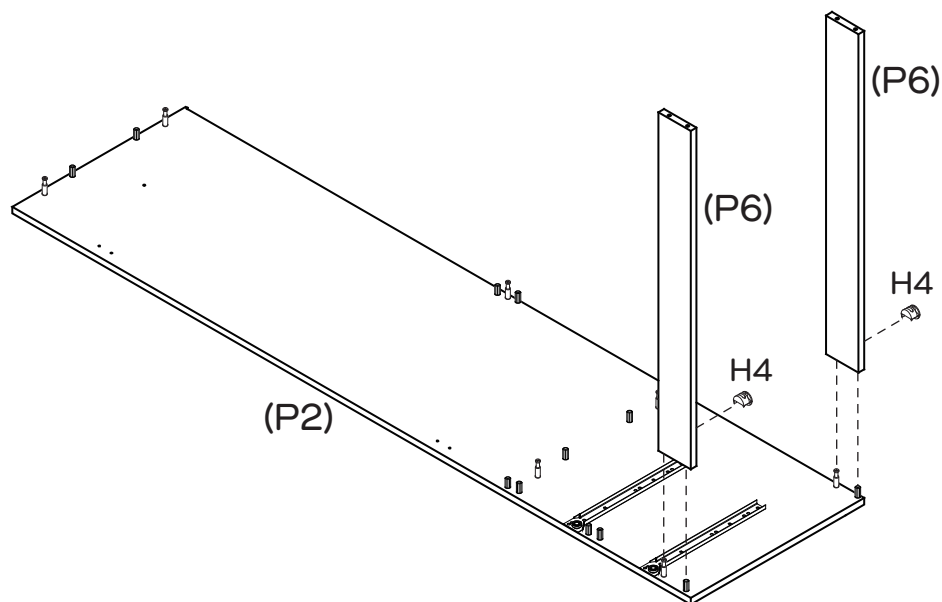
You will need	
	
2 x Catapult Base (H12)	2 x Catapult (H13)
	
4 x Small Screws (H5)	Phillips Head Screwdriver



Attach 2 x Catapult Base (H12) to Top Panel (P1) with 4 x Small Screws (H5) as shown, then insert 2 x Catapult (H13) into the catapult base.

Step 6

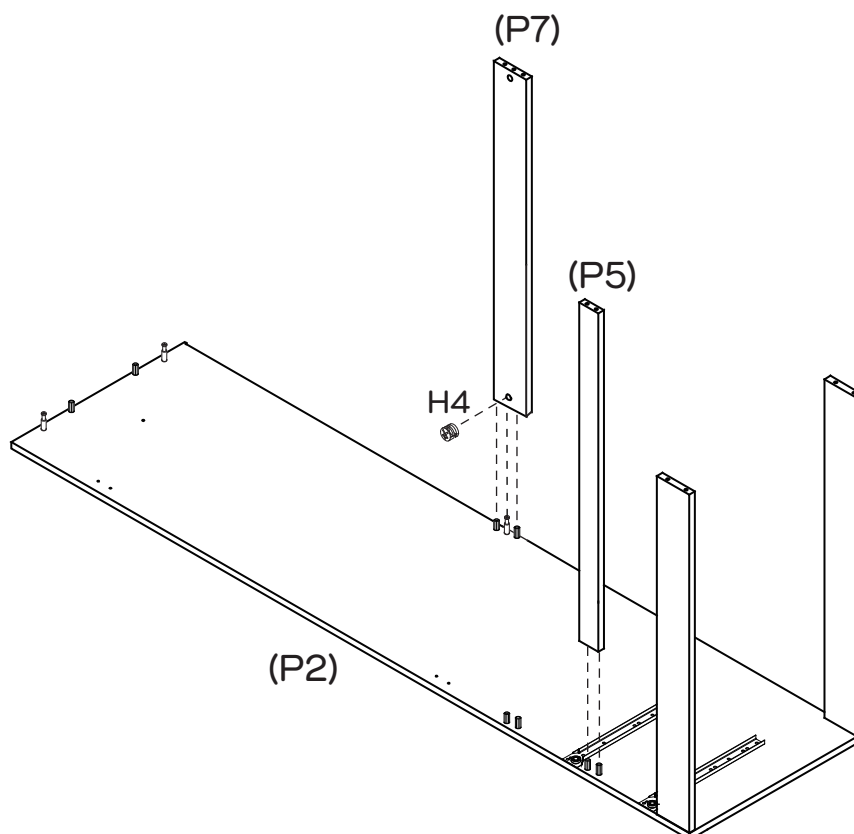
You will need	
	
2 x Cam Nuts (H4)	Phillips Head Screwdriver



Insert 2 x Cam Nuts (H4) into the holes of 2 x Rails (P6).
 Rotate the cam nuts so the arrows point towards the incoming cam bolts.
 Attach 2 x Rails (P6) to Left Side Panel (P2), then tighten the cam nuts.

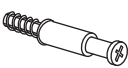

Step 7

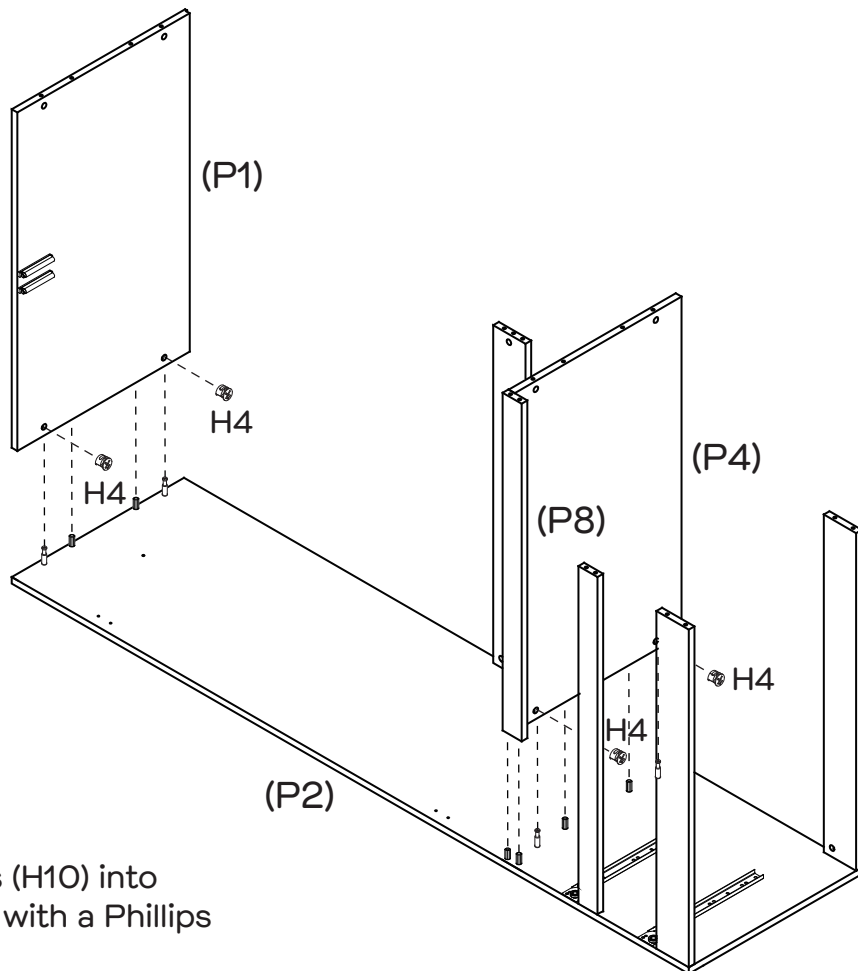
You will need	
	
2 x Cam Nuts (H4)	Phillips Head Screwdriver



Insert 1 x Cam Nut (H4) into the hole of Rail (P7).
 Rotate the cam nut so the arrow point towards the incoming cam bolt.
 Attach Rails (P5,P7) to Left Side Panel (P2), then tighten the cam nuts.

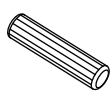


Step 8

You will need	
	
4 x Small Cam Bolts (H3)	Phillips Head Screwdriver



Attach 4 x Small Cam Bolts (H10) into Drawer Front (P8). Tighten with a Phillips Head Screwdriver.

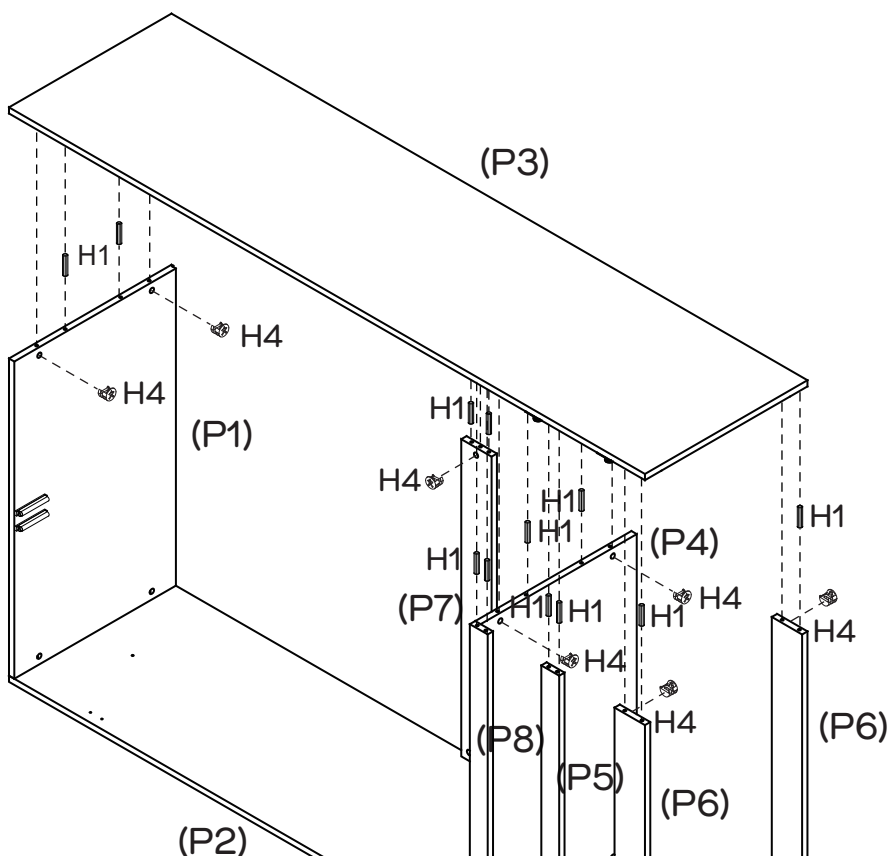
Step 9

You will need	
	
12 x Dowels (H1)	7 x Cam Nuts (H4)
	
Phillips Head Screwdriver	

Two People







Required



Insert 12 x Dowels (H1) into the holes of Panels (P1,P4), 2 x Rails (P6) and Rails (P5,P7,P8). Insert 7 x Cam Nuts (H4) into the holes of Panels (P1,P4), 2 x Rails (P6) and Rail (P7).

Rotate the cam nuts so the arrows point towards the incoming cam bolts. Push Right Side Panel (P3) into place and tighten the cam nuts.

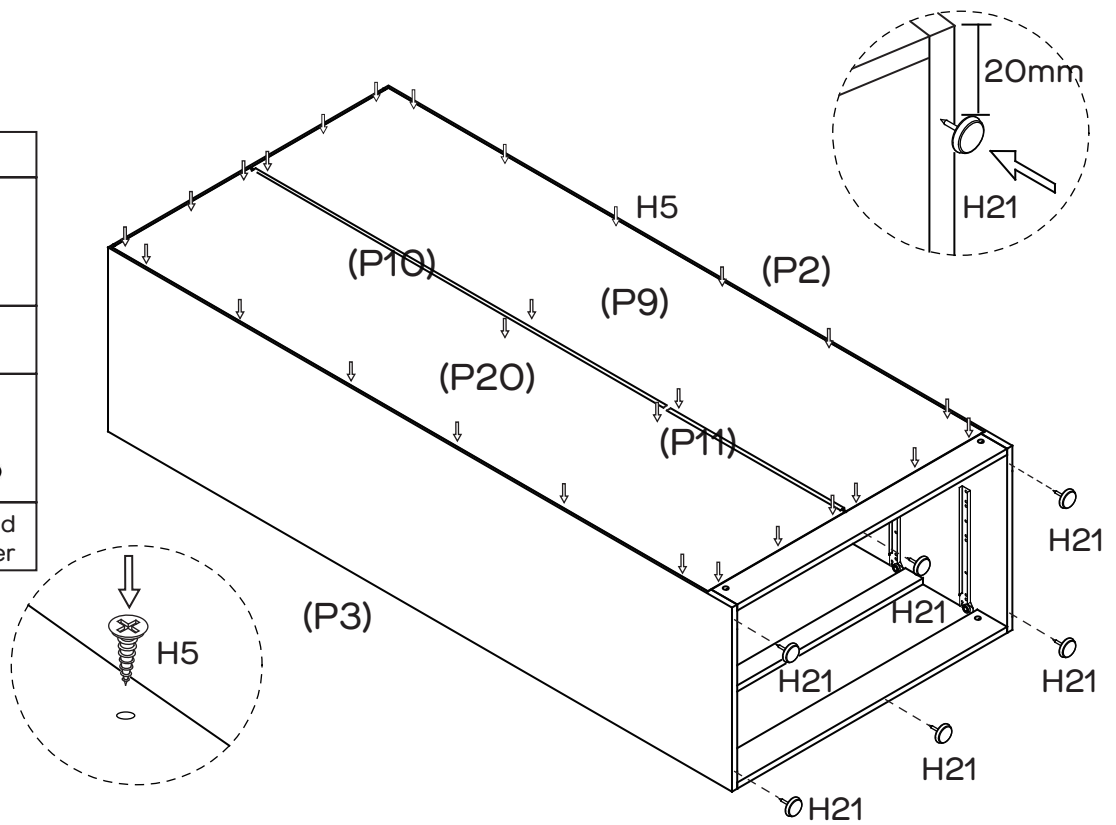
Step 10

You will need	
	
28 x Small Screws (H5)	6 x Plastic Glides (H21)
	
Hammer	Phillips Head Screwdriver

Two People








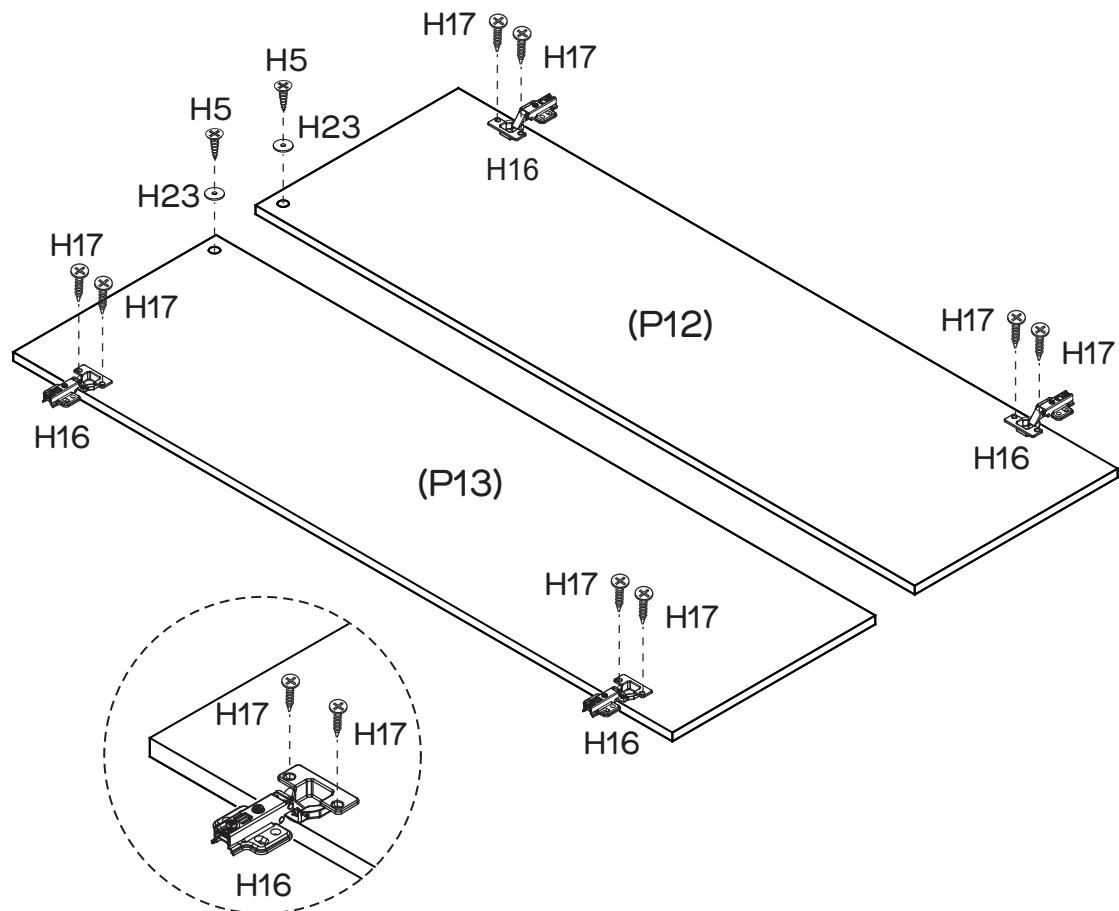
Required



Join Back Panels (P9,P20) with Long Connect Stick (P10) and Short Connect Stick (P11), then put into the groove on the back of the carcase, colour faces inside, attach it with 28 x Small Screws (H5). Then hammer 6 x Plastic Glides (H21).

Step 11

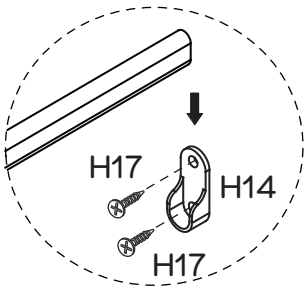
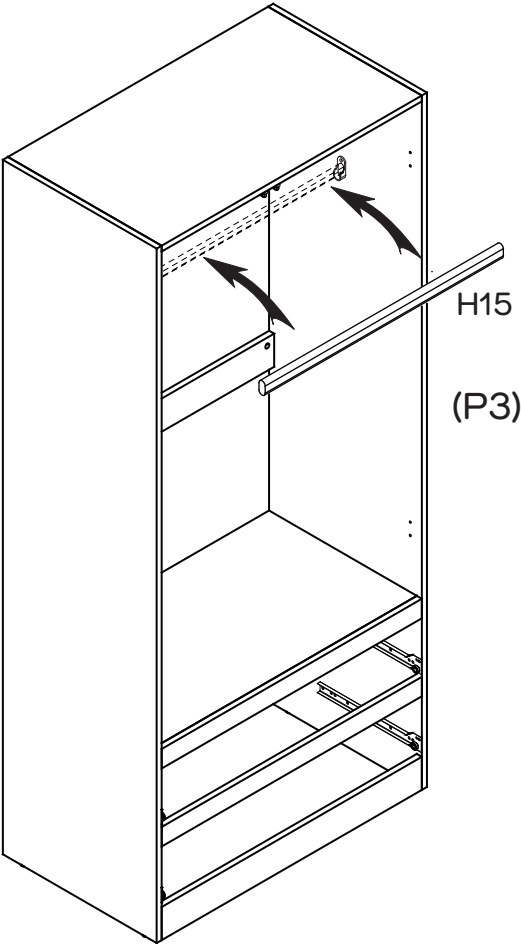
You will need	
	
2 x Small Screws (H5)	4 x Hinges (H16)
	
8 x Timber Screws (H17)	2 x Steel Plate Screws (H23)
	
Phillips Head Screwdriver	



Attach 2 x Steel Plate (H23) to Doors (P12,P13) with 2 x Small Screws (H5). Attach 4 x Hinges (H16) to Doors (P12,P13) with 8 x Timber Screws (H17).

Step 12

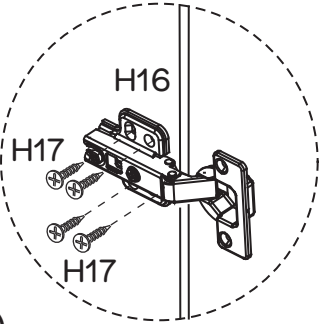
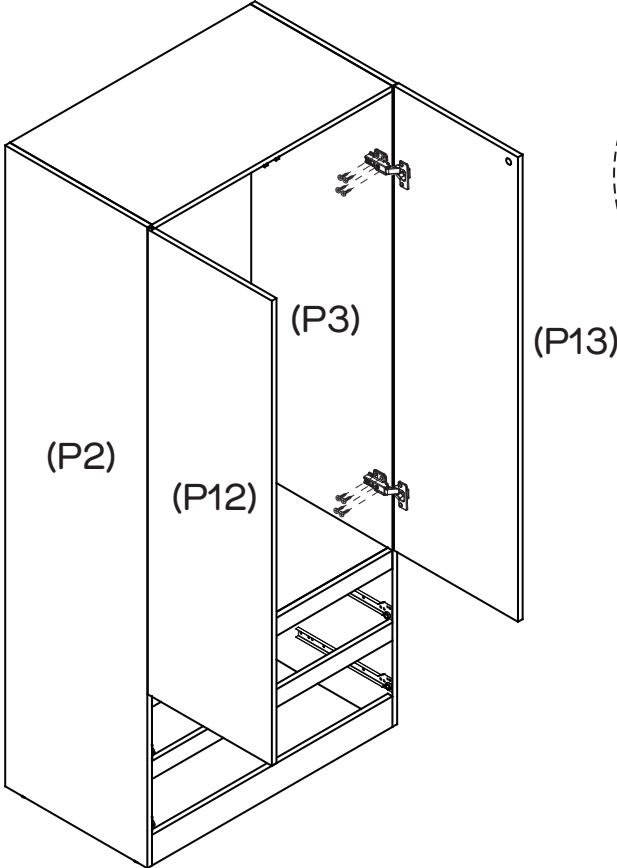
You will need	
2 x Clothes Hanger Support (H14)	1 x Clothes Hanger (H15)
4 x Timber Screws (H17)	Phillips Head Screwdriver



Attach 1 x DL Runner (H8) to the bottom of Left Drawer Side (P9) and 1 x DR Runner (H9) to the bottom of Right Drawer Side (P10) with 4 x Small Screws (H5). Repeat step 9 to step 14 to assemble the other drawer.

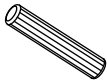
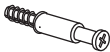

Step 13

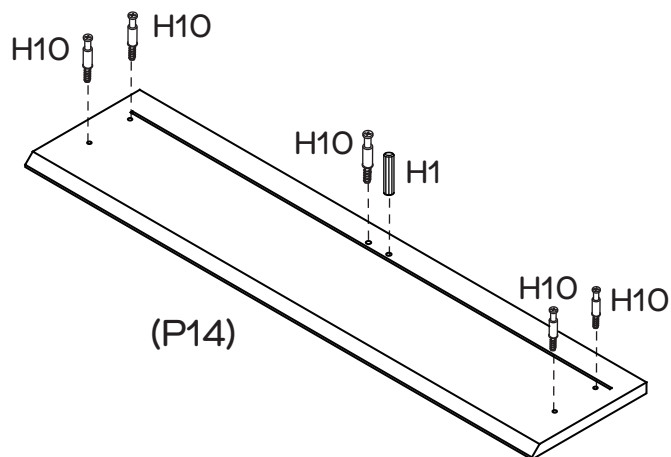
You will need	
16 x Timber Screws (H17)	Phillips Head Screwdriver



Attach Left Door (P12) to Left Side Panel (P2) and Right Door (P13) to Right Side Panel (P3) with 16 x Timber Screws (H17).



Step 14

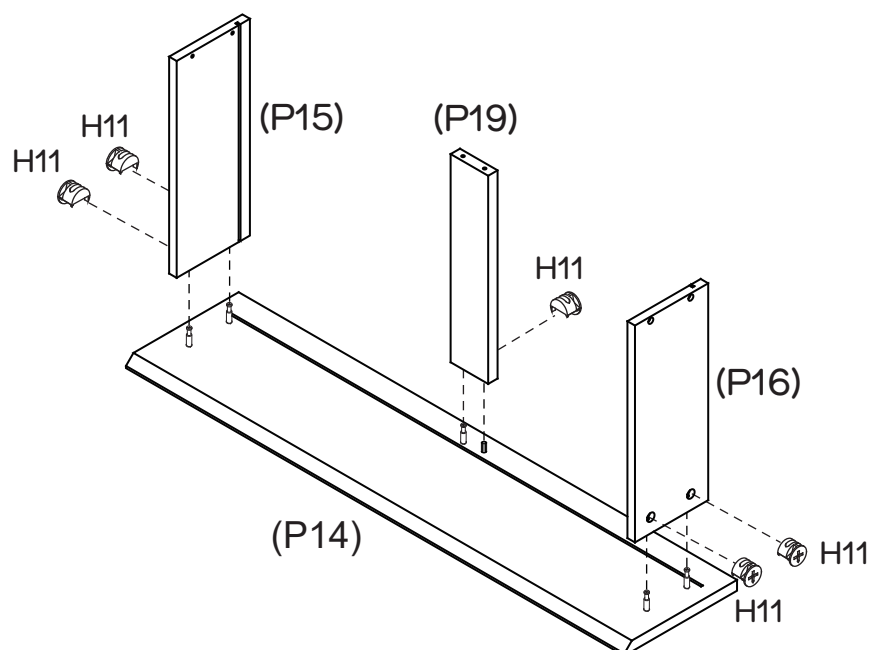
You will need	
	
1 x Dowel (H1)	5 x Small Cam Bolts (H10)
	
Phillips Head Screwdriver	



Insert 1 x Dowel (H1) into Drawer Front (P14).
Attach 5 x Small Cam Bolts (H10) as shown.

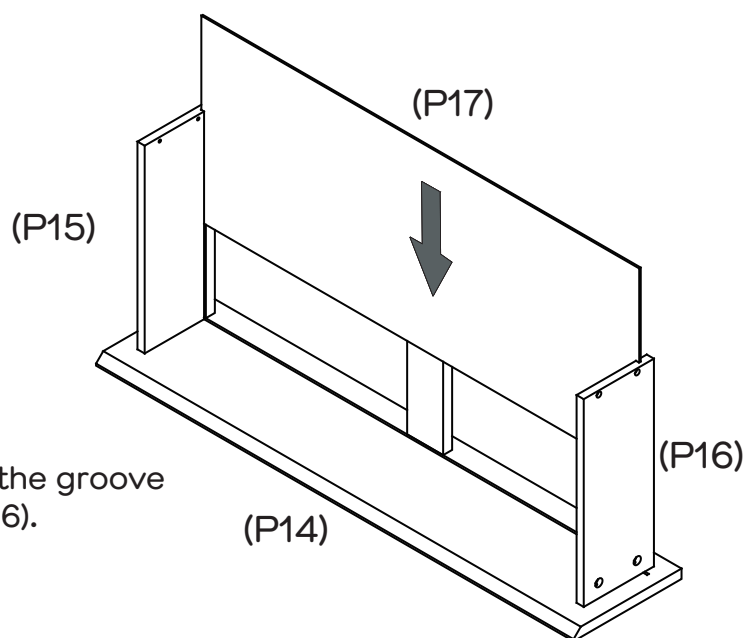
Step 15

You will need	
	
5 x Small Cam Nuts (H11)	Phillips Head Screwdriver





Insert 5 x Small Cam Nuts (H11) into the holes of Drawer Sides (P15,P16) and Support Rail (P19). Rotate the cam nuts so the arrows point towards the incoming cam bolts. Push Drawer Side (P15,P16) and Support Rail (P19) into place and tighten the cam nuts.

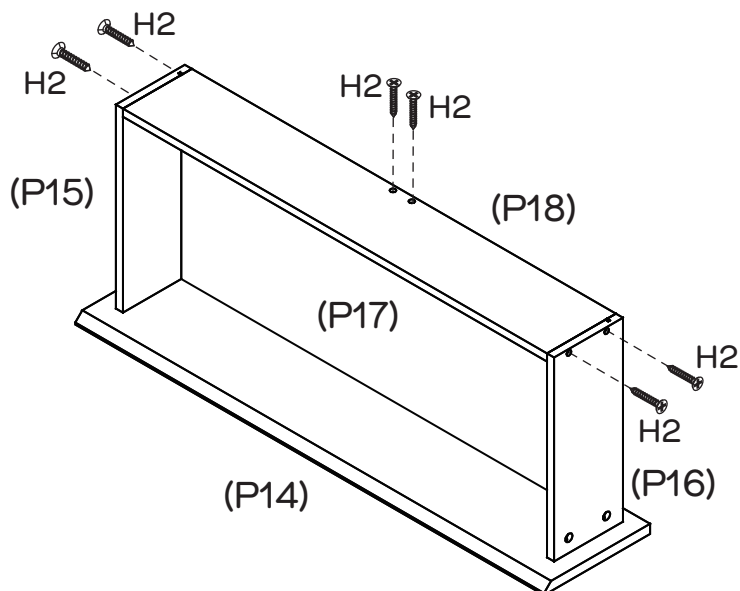
Step 16



Slide Drawer Base (P17) into the groove in Drawer Sides (P15) and (P16).

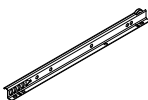
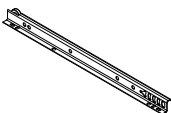


Step 17

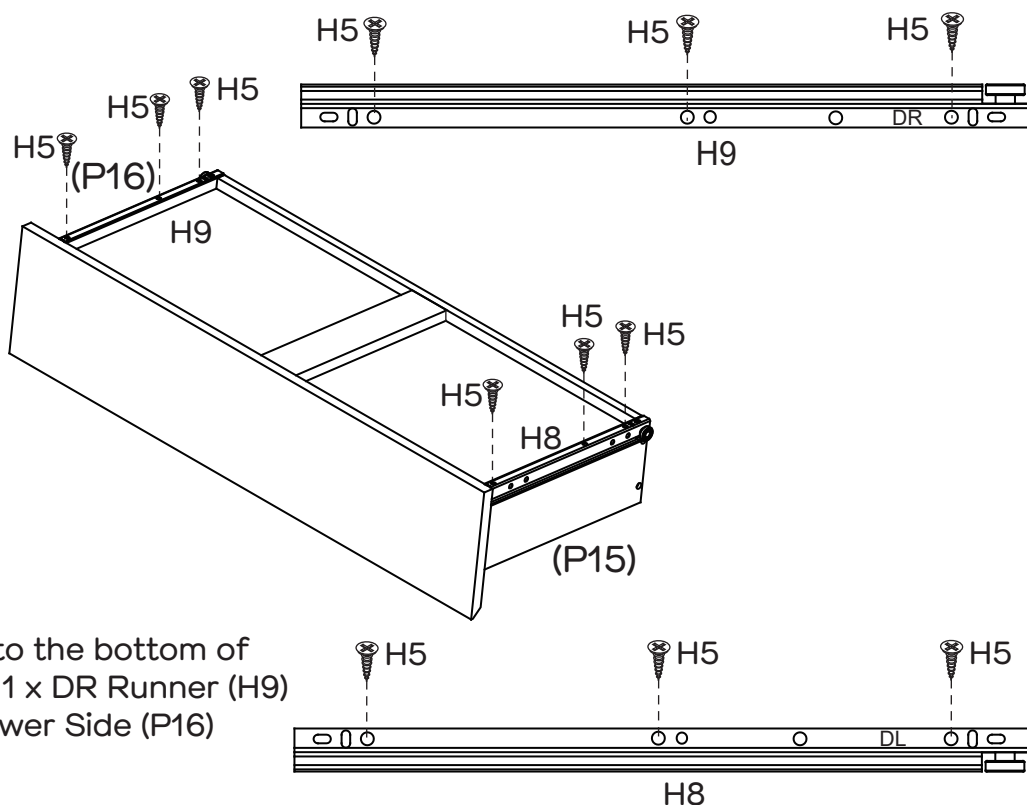
You will need	
	
6 x Long Screws (H2)	Phillips Head Screwdriver



Attach Drawer Back (P18) to Drawer Sides (P15,P16) with 4 x Long Screws (H2), then attach Drawer Back (P18) to Support Rail (P19) with 2 x Long Screws (H2). Make sure that the groove lines up the whole way around the drawer.

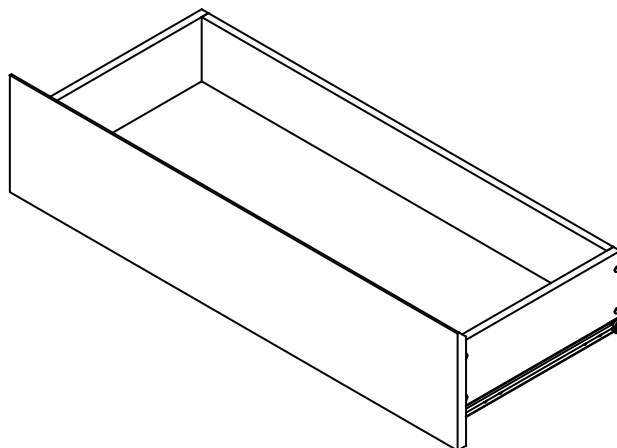
Step 18

You will need	
	
1 x DL Runners (H8)	1 x DR Runners (H9)
	
6 x Small Screws (H5)	Phillips Head Screwdriver



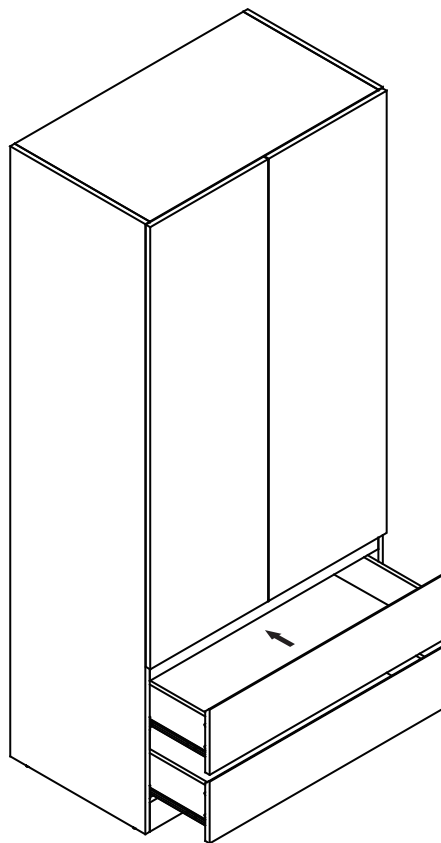
Attach 1 x DL Runner (H8) to the bottom of Left Drawer Side (P15) and 1 x DR Runner (H9) to the bottom of Right Drawer Side (P16) with 6 x Small Screws (H5).

Step 19

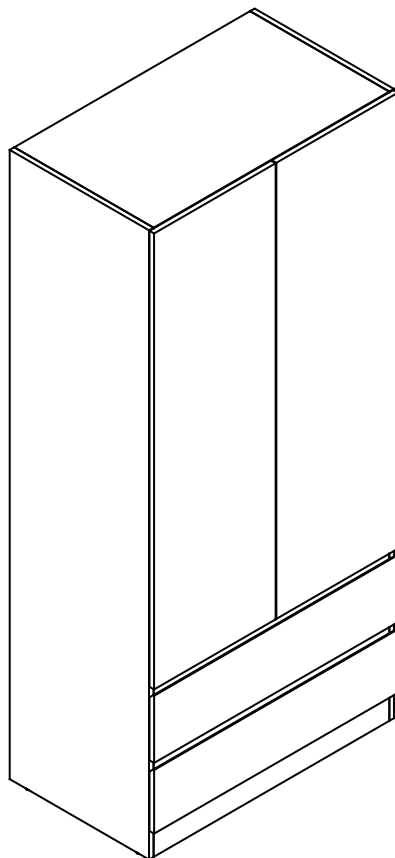


Repeat step 14 to step 18 to assemble the other drawer.

Step 20



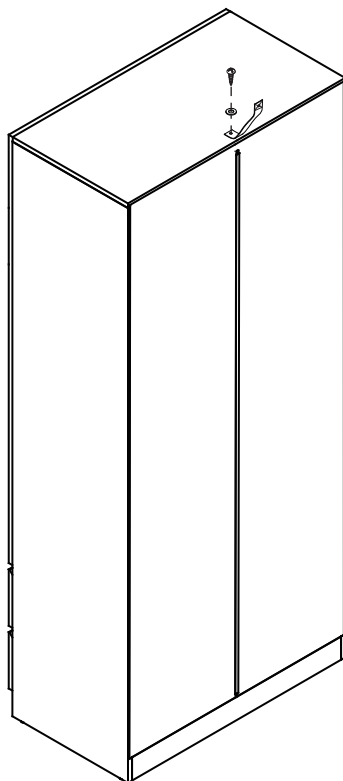
Insert the assembled drawers into the corresponding compartments as shown. Ensure the drawers slide easily along the rails.



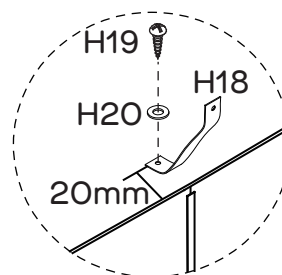
Please make sure your chest is sitting squarely on the floor, then tighten all the screws and bolts – being careful not to over tighten

Step 21

You will need	
	
1 x Safety Strap (H18)	1 x Screw (H19)
	
1 x Washer (H20)	Phillips Head Screwdriver





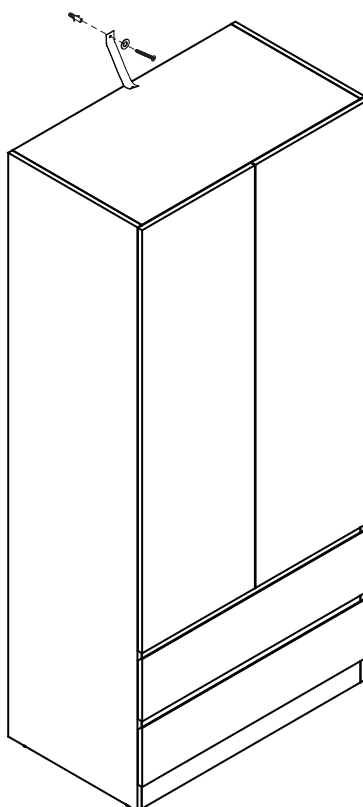
We strongly advise that you use the wall safety strap provided to prevent the unit toppling



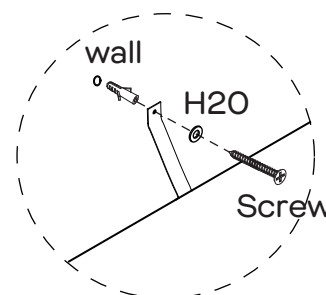
Use Screw (H19) and Washer (H20) to connect Safety Strap (H18) on Top Panel (P1).

Step 22

You will need	
	
1 x Washer (H20)	Phillips Head Screwdriver
Screw and Wall Plug are not provided. Please use appropriate fixtures for your wall.	



Seek advice from a qualified trades person on how to attach this safety strap to your specific wall.

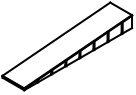


Move the dresser to the final position, and attach the safety strap to the wall securely. Make sure it is firmly attached and snug fit.

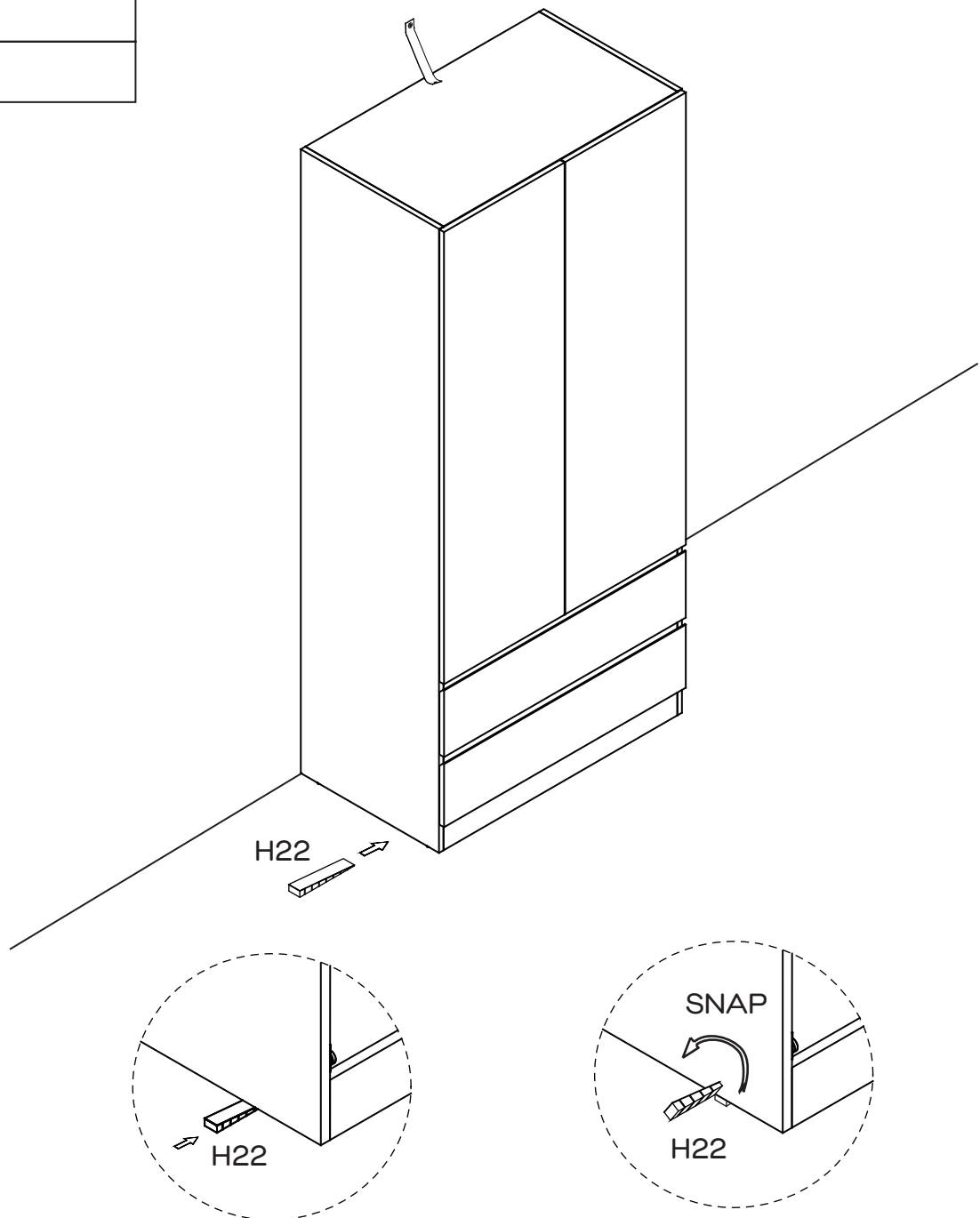
Job Complete!

In the interest of our environment please dispose of all packaging thoughtfully.

Step 23

You will need	
	
1 x Wedge (H22)	

OPTIONAL STEP TO LEVEL WARDROBE ON UNEVEN FLOOR

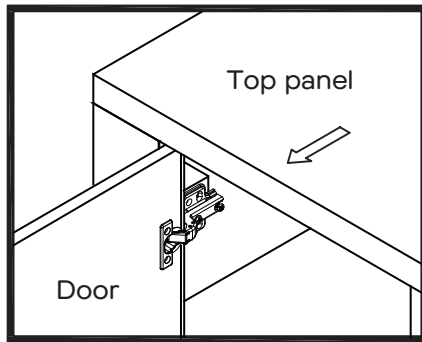


Insert the wedge (H22) under the wardrobe at the point where the floor is lowest. Push in until wardrobe is level, then snap off the excess wedge sections.

HOW TO ADJUST THE HINGES TO ALIGN THE DOORS IF NEEDED.

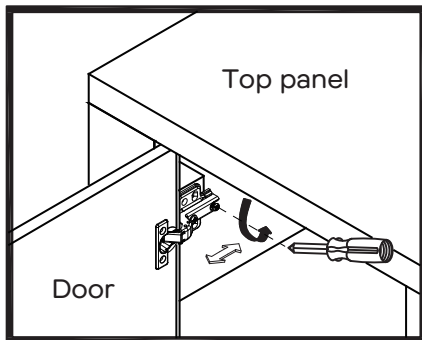
STEP 1

Open the door.



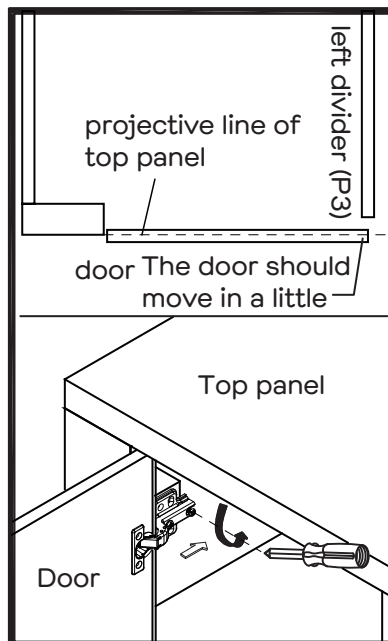
STEP 2

Adjust the door move in or out a little



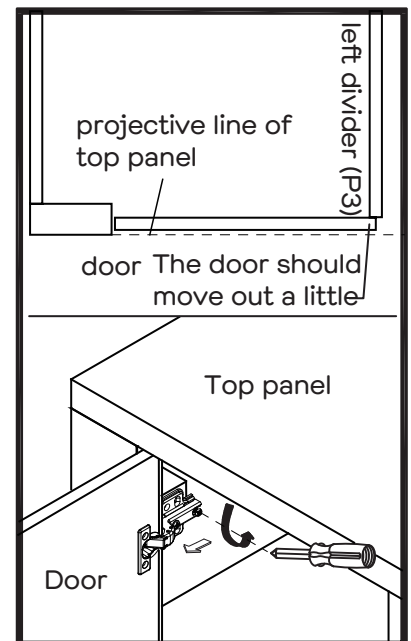
Loosen the screw indicated a little, adjust the hinge to right position (see step 2a & 2B), then tighten screw.

STEP 2a MOVE DOOR IN



Push the hinge back a little.

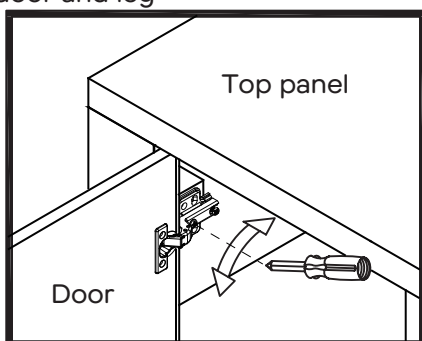
STEP 2b MOVE DOOR OUT



Pull the hinge forward a little.

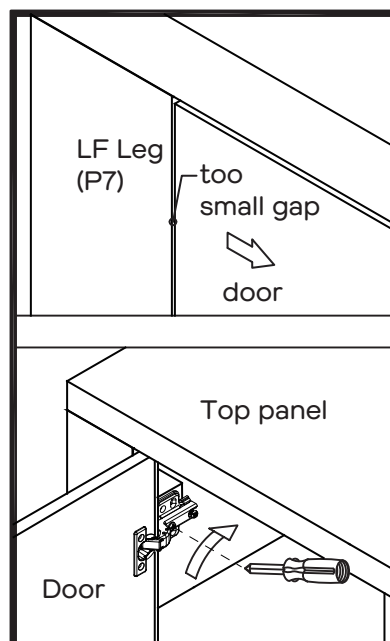
STEP 3

To adjust the gap between door and leg



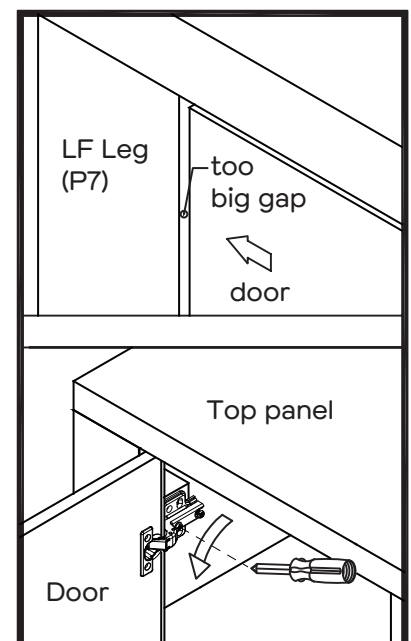
Loosen or tighten the screw indicated a little to adjust the gap between door and leg (see step 3a & step 3b)

STEP 3a MOVE DOOR RIGHT



Turn the screw clockwise a little as shown to make the gap big.

STEP 3b MOVE DOOR LEFT



Turn the screw counterclockwise a little as shown to make the gap small.