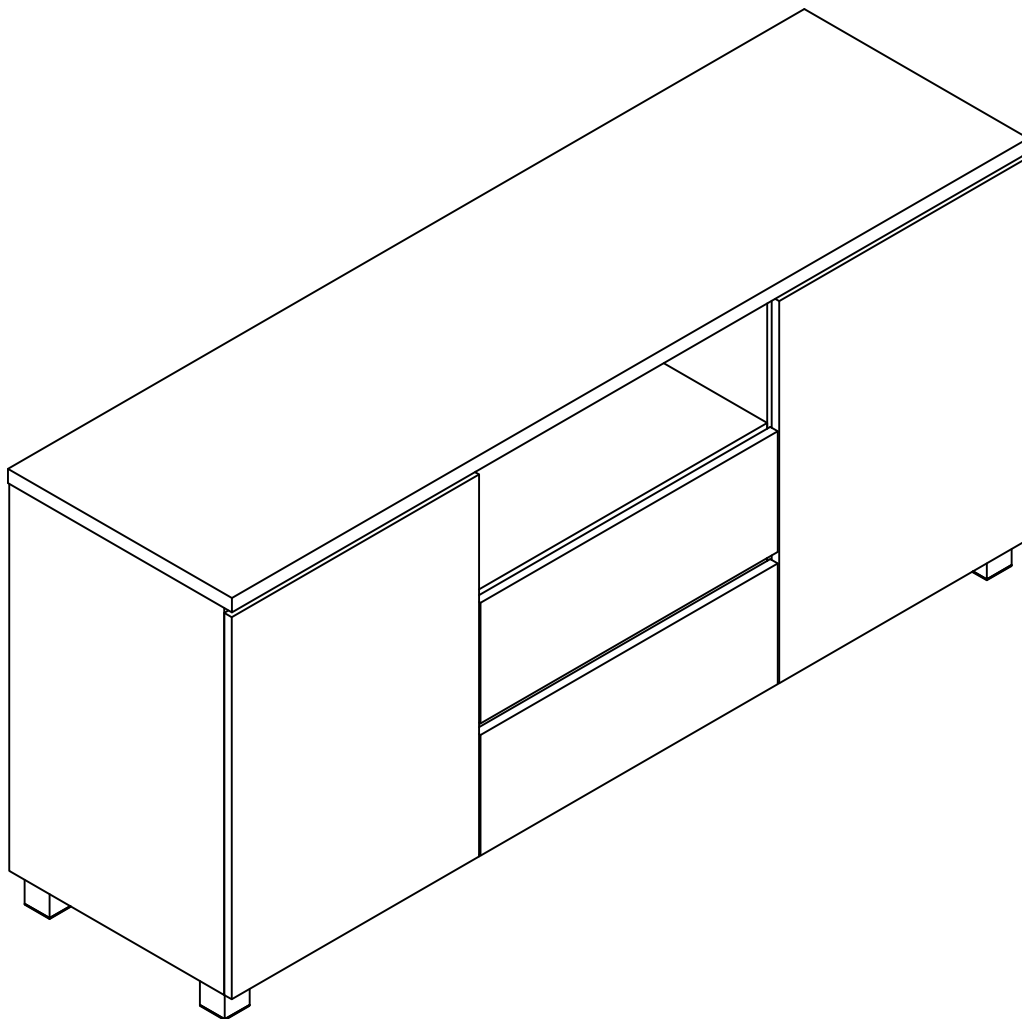
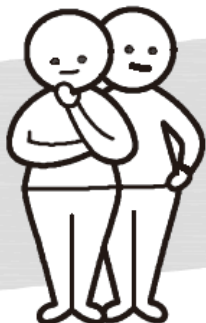




Version 1.0



TWO PEOPLE



REQUIRED

# VERONA

## BUFFET 2 DOOR

[www.fantasticfurniture.com.au](http://www.fantasticfurniture.com.au)

**WARNING: ENSURE THE WALL STRAP IS  
ATTACHED TO AVOID SERIOUS INJURY.**

To avoid any serious or fatal injury, this product has been provided with a wall strap to prevent toppling. We strongly recommend that this product is permanently fixed to the wall or other suitable surface. Fixing devices are not included since different surface materials require different attachments. Please seek professional advice if you are in doubt of what fixing device to use.

# Enjoy

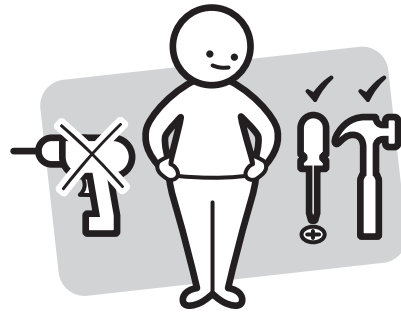
Your purchase from  
Australia's Best Value Furniture Store



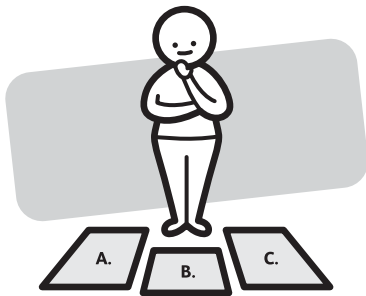
# Assembly checklist



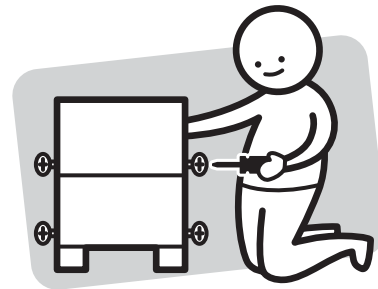
Read through the instructions carefully before you begin.



Make sure you have all the required tools.  
Never use power tools unless instructed.



Identify and lay out all of the components before you begin assembly.



Unless instructed, do not fully tighten screws until the item is fully assembled.

## Useful Information

- ! Never use power tools unless specifically instructed. They can damage your components or hardware if used incorrectly.
- ! The most common mistakes made during assembly are using the wrong hardware or getting components back to front.
- ! Always use a soft surface (such as carpet or cardboard) when assembling your product to avoid scratching or damaging the surface of the product.
- ! Bulky items such as wardrobes and bunk beds should be assembled in the room they will be used in as they may not fit through a door once assembled.
- ! Never use any glue until you are certain that the parts belong together.
- ! Periodically check and re-tighten all fasteners. Check the product care label or website for product care instructions.
- ! If you are having any difficulties assembling your product, missing any hardware or components please visit our website Help Centre for further assistance.

# What you Need

## to assemble the product

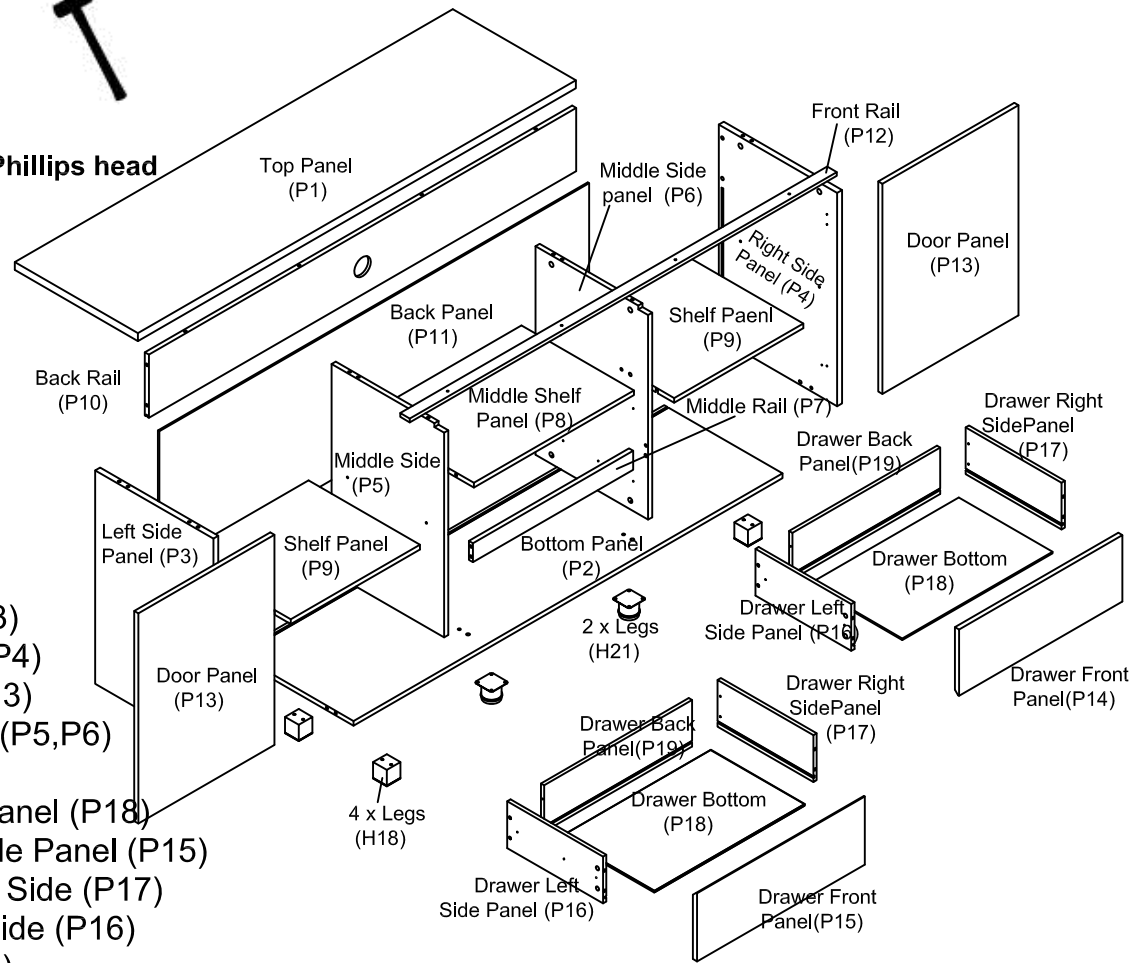


DO NOT USE



Other tools you need

Flat head screwdriver; Phillips head screwdriver; Mallet



### Part List

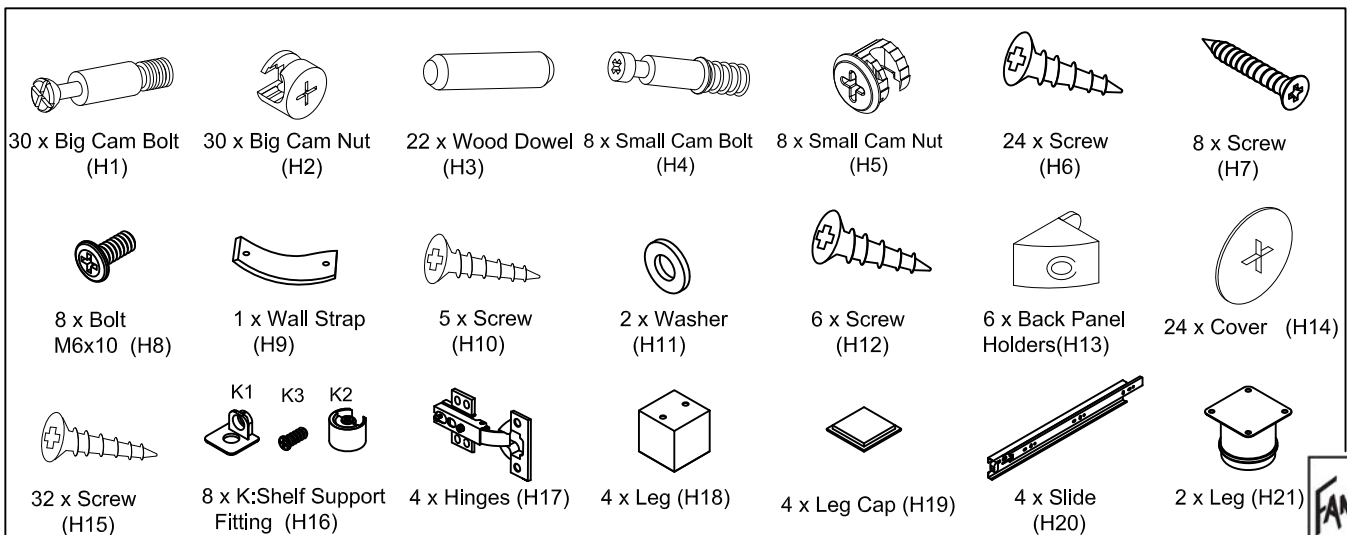
#### Box 1: Left Side Panel (P3)

- Right Side Panel (P4)
- 2 x Door Panel (P13)
- Middle Side Panel (P5,P6)
- Middle Rail (P7)
- 2 x Drawer Back Panel (P18)
- 2 x Drawer Left Side Panel (P15)
- 2 x Drawer Bottom Side (P17)
- 2 x Drawer Right Side (P16)
- 6 x Legs (H18,H21)



#### Box 2: Top Panel (P1)

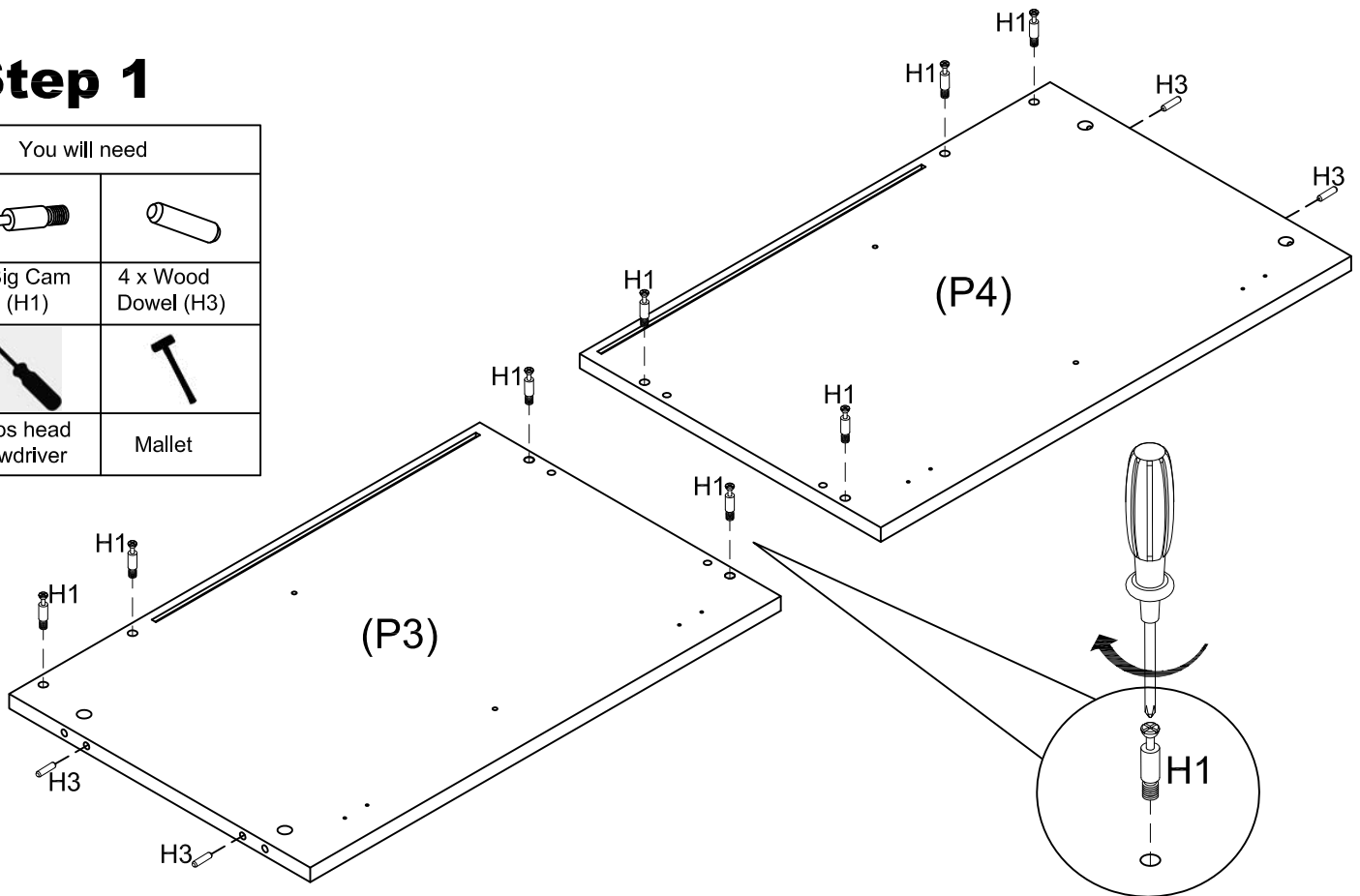
- Bottom Panel (P2)
- 2 x Drawer Front Panel (P14,P15)
- Back Panel (P11)
- Back Rail (P10)
- Front Rail (P12)
- 2 x Shelf Panel (P9)
- Middle Shelf Panel (P8)

### Hard list






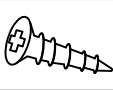


## Step 1

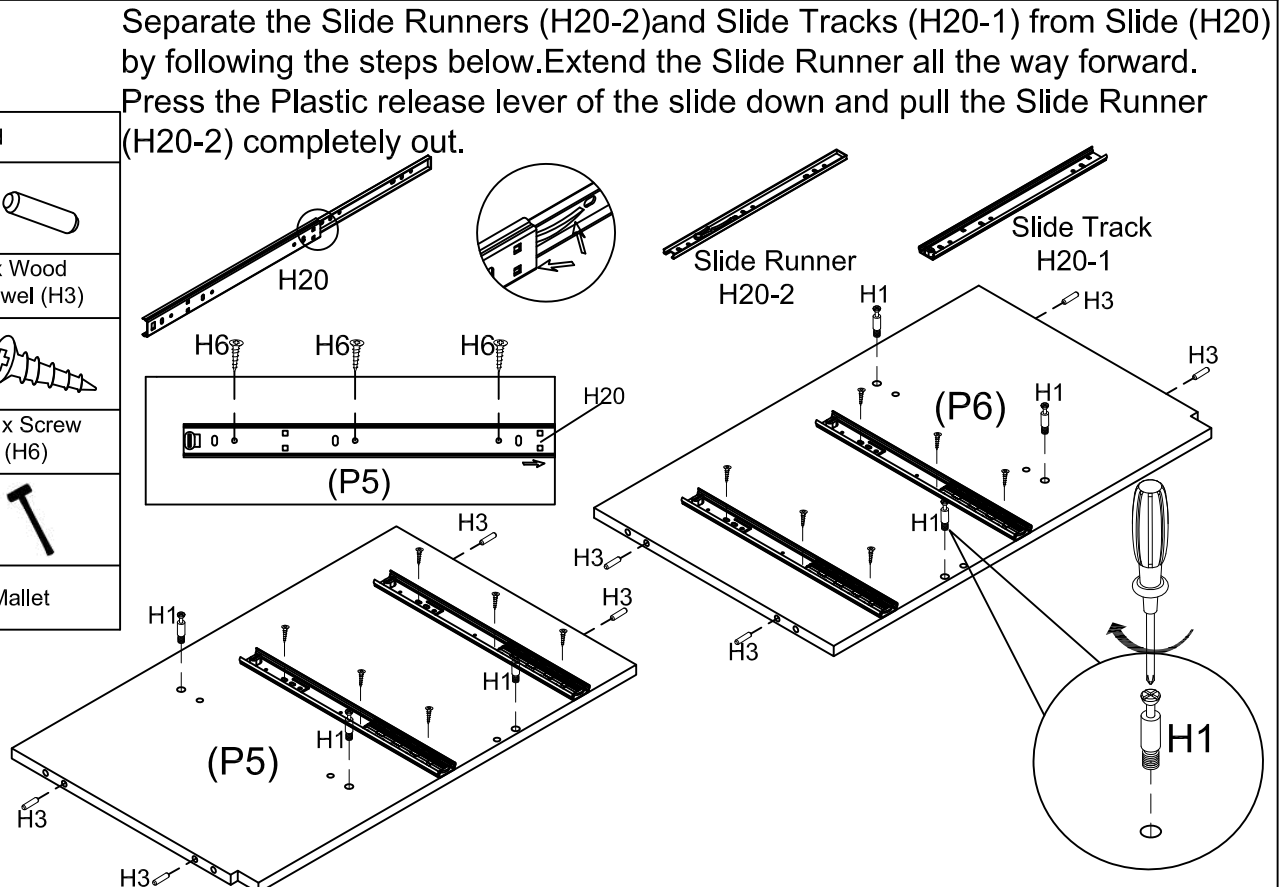
You will need	
	
8 x Big Cam Bolts (H1)	4 x Wood Dowel (H3)
	
Phillips head screwdriver	Mallet



Using a mallet if needed, Insert 4 x Dowel (H3) onto the Left Side Panel (P3) and Right Side Panel (P4). Screw 8 x Big Cam Bolt (H1) onto the Left Side Panel (P3) and Right Side Panel (P4).






## Step 2

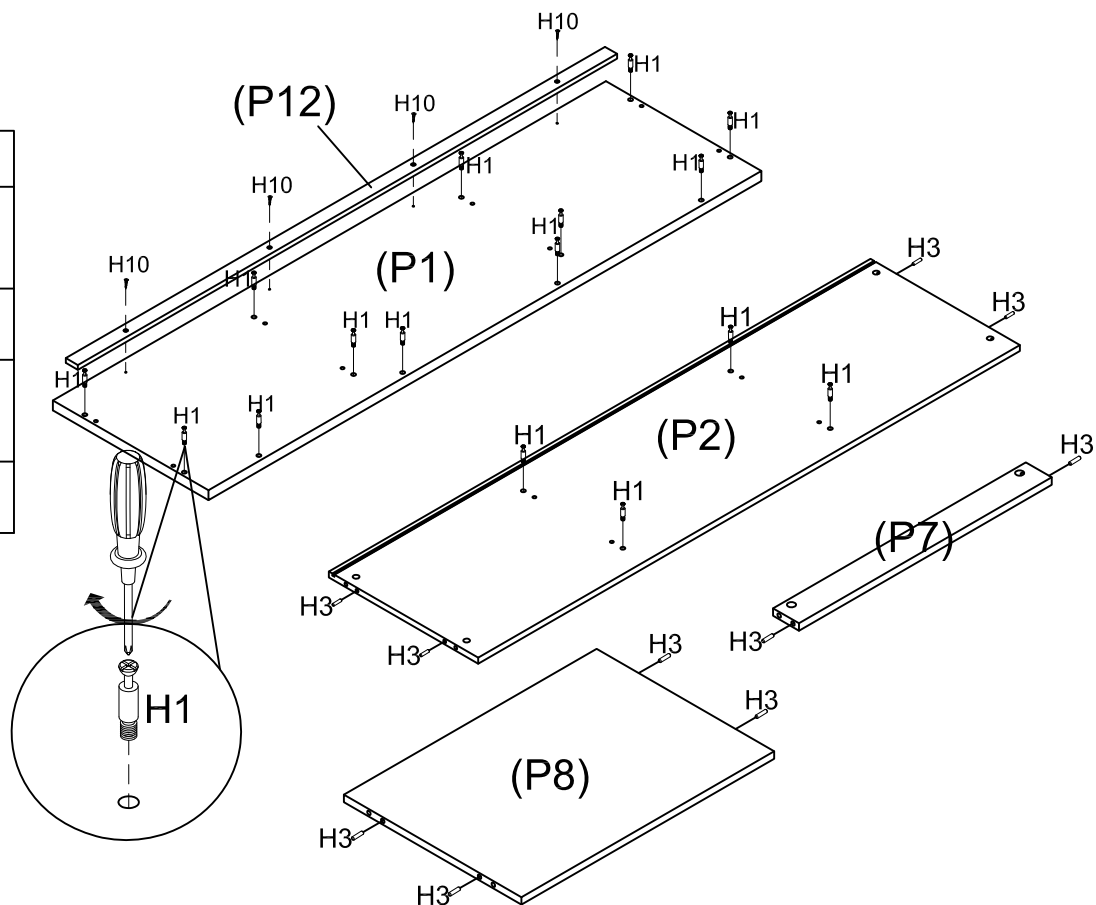
You will need	
	
6 x Big Cam Bolts (H1)	8 x Wood Dowel (H3)
	
4 x Slide (H20)	12 x Screw (H6)
	
Phillips head screwdriver	Mallet



Insert 8 x Dowel (H3) onto the Middle Side Panel (P5,P6). Screw 6 x Big Cam Bolt (H1) onto the Middle Side Panel (P5,P6). By using a Phillip Head Screwdriver, attach 4 x Slide Track (H20-1) onto the Middle Side Panel (P5,P6) by using 12 x Screw (H6).

## Step 3

You will need	
	
16 x Big Cam Bolts (H1)	10 x Wood Dowel (H3)
	
4 x Screw (H10)	Mallet
	
Phillips head screwdriver	





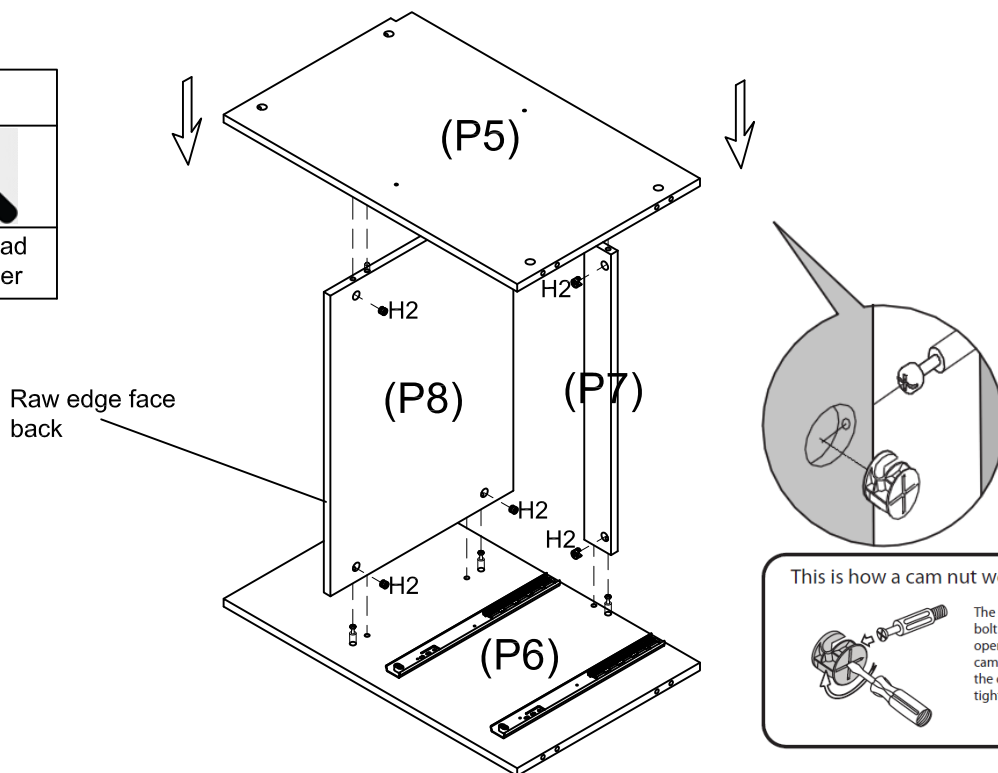
Using a mallet if needed, Insert 10 x Dowel (H3) onto the Bottom Panel (P2) and Middle Rail (P7) and Middle Shelf Panel (P8).

Screw 16 x Big Cam Bolt (H1) onto the Top Panel (P1) and Bottom Panel (P2).

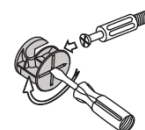
Tighten the Front Rail (P12) to the Top Panel (P1) with 4 x Screw (H10)

## Step 4

You will need	
	
6 x Big Cam Nuts (H2)	Phillips head screwdriver



This is how a cam nut works.....



The head of the cam bolt goes into the open mouth of the cam nut. You then turn the cam nut so it tightens over the bolt.

Position the Middle Panel (P5,P6) to the Middle Shelf Panel (P8) and Middle Rail (P7). Insert the 6 x Big Cam Nuts (H2) to the Panel (P7,P8) make sure the opening on nuts is facing incoming cam bolt, turn clockwise to lock.



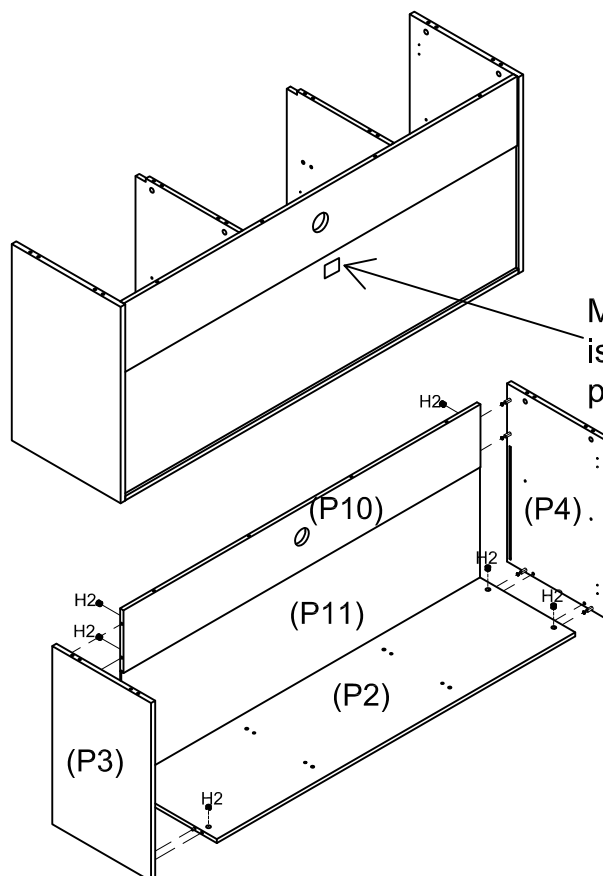
## Step 5

TWO PEOPLE

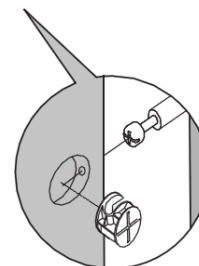


REQUIRED

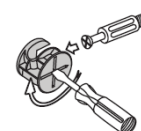
You will need	
8 x Big Cam Nuts (H2)	Phillips head screwdriver
8 x Cover (H14)	



Make sure the <back> label is on the back of the back panel



This is how a cam nut works.....

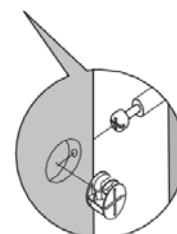
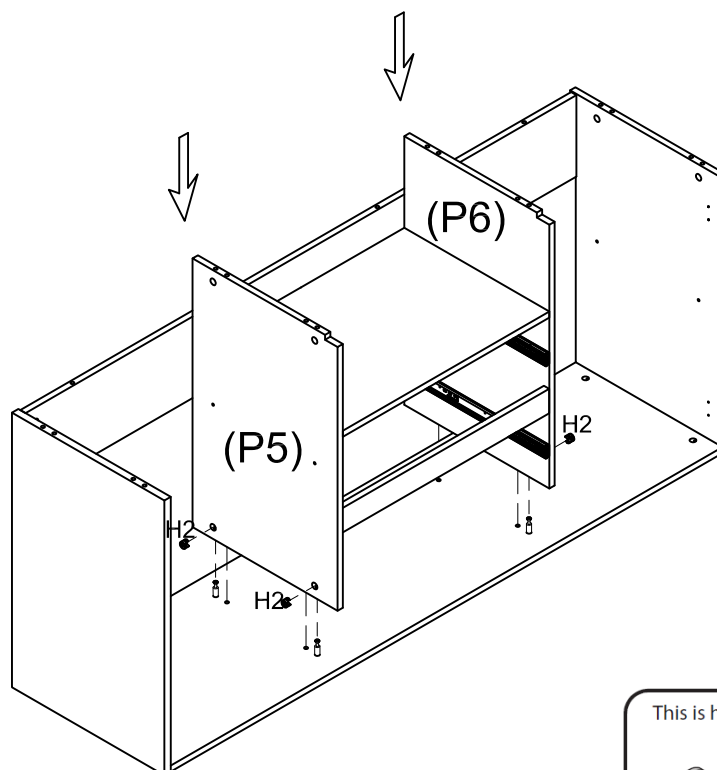


The head of the cam bolt goes into the open mouth of the cam nut. You then turn the cam nut so it tightens over the bolt.

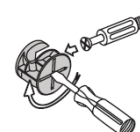
Position the Side Panel (P3,P4) to the Bottom Panel (P2) and Back Rail (P10) and Back Panel (P11). Insert the 8 x Big Cam Nuts (H2) to the Bottom Panel (P2) and Back Rail (P10) make sure the opening on nuts is facing incoming cam bolt, turn clockwise to lock. Insert the 8 x Covers (H14) onto the Big Cam Nut (H2).

## Step 6

You will need	
4 x Big Cam Nuts (H2)	Phillips head screwdriver
4 x Cover (H14)	






This is how a cam nut works.....

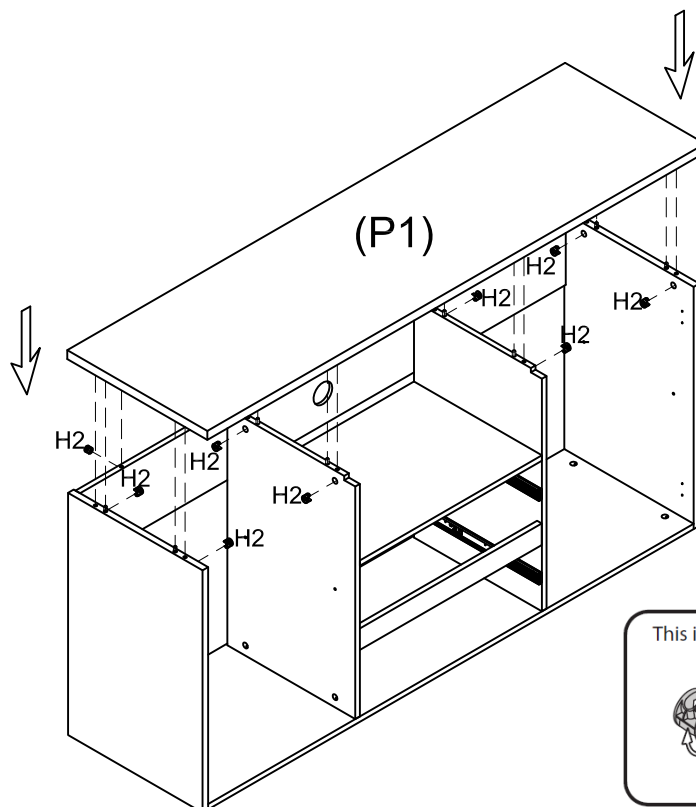


The head of the cam bolt goes into the open mouth of the cam nut. You then turn the cam nut so it tightens over the bolt.

Position the Middle Side Panel (P5,P6) to the Bottom Panel (P2). Insert the 4 x Big Cam Nuts (H2) to the Middle Side Panel (P5,P6) make sure the opening on nuts is facing incoming cam bolt, turn clockwise to lock. Insert the 4 x Covers (H14) onto the Big Cam Nut (H2).

## Step 7

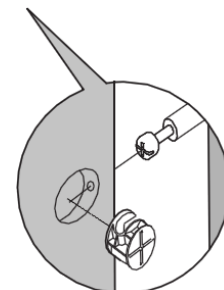
You will need	
	
12 x Big Cam Nuts (H2)	Phillips head screwdriver
	
12 x Cover (H14)	



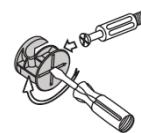
TWO PEOPLE



REQUIRED



This is how a cam nut works.....



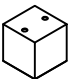





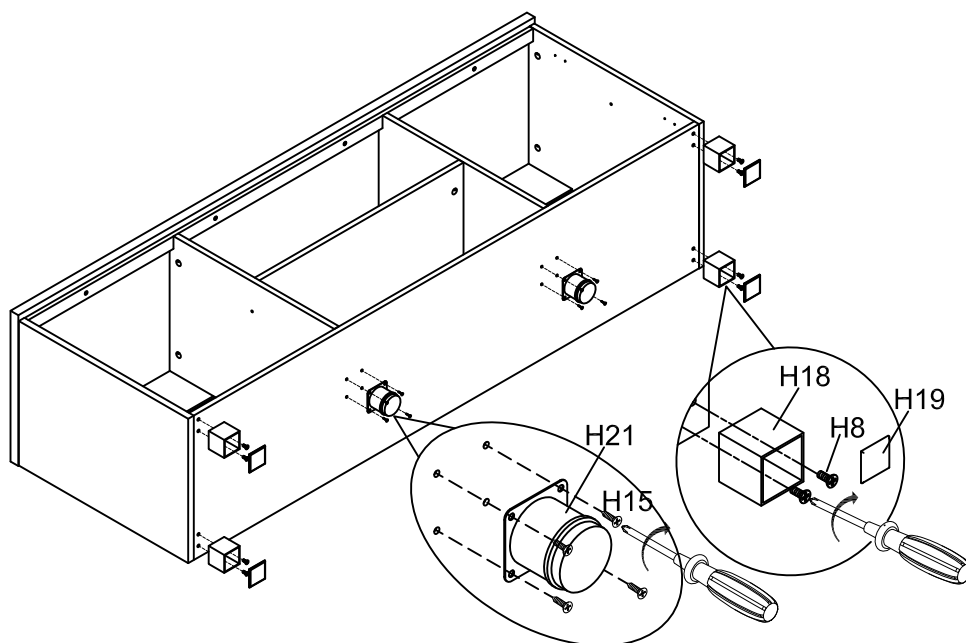
The head of the cam bolt goes into the open mouth of the cam nut. You then turn the cam nut so it tightens over the bolt.

Position the Top Panel (P1) to the Left Side Panel (P3) and Right Side Panel (P4) and Middle Side Panel (P5,P6) and Back Rail (P10).

Insert the 12 x Big Cam Nuts (H2) to the Left Side Panel (P3) and Right Side Panel (P4) and Middle Side Panel (P5,P6) and Back Panel (P10) make sure the opening on nuts is facing incoming cam bolt, turn clockwise to lock. Insert the 12 x Covers (H14) onto the Big Cam Nut (H2).

## Step 8

You will need	
	
8 x Bolt (H8)	8 x Screw (H15)
	
4 x Leg (H18)	4 x Leg Cap (H19)
	
2 x Leg (H21)	Phillips head screwdriver




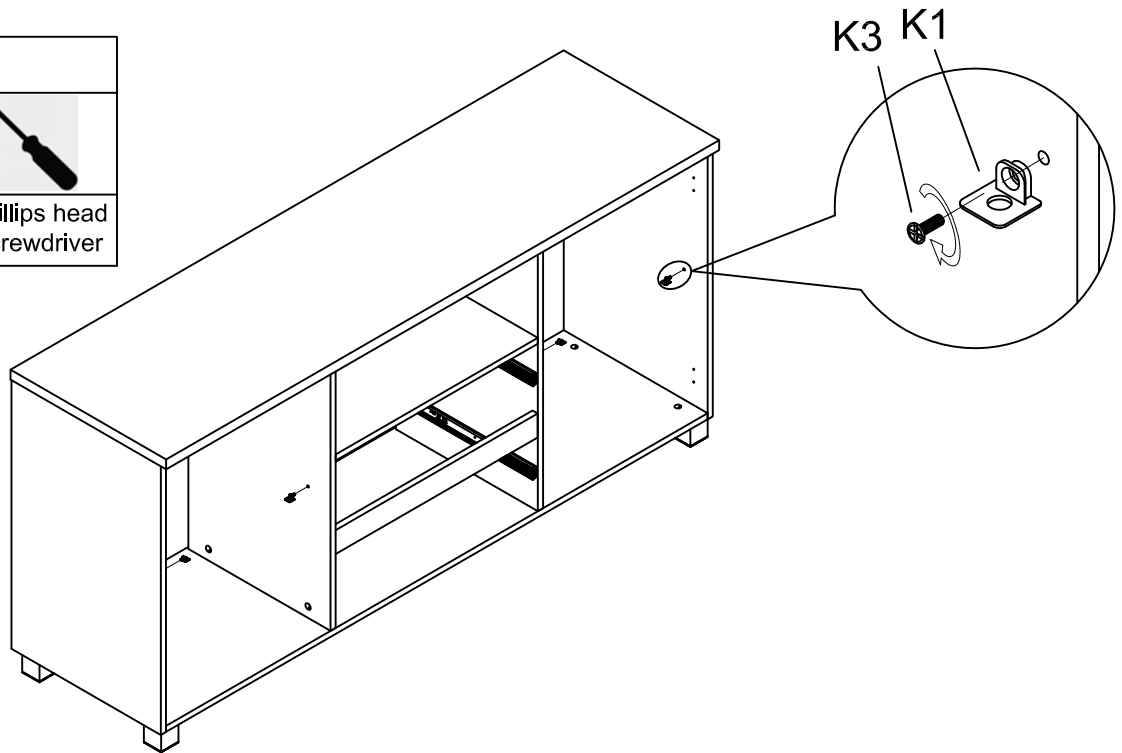
Attach 4 x Leg (H18) to Bottom Panel by using 8 x Bolt (H8), then insert 4 x Leg Cap (H19) onto Leg (H18). attach 2 x Leg (H21) to Bottom Panel by using 8 x Screw (H15).

[www.fantasticfurniture.com.au](http://www.fantasticfurniture.com.au)




## Step 9

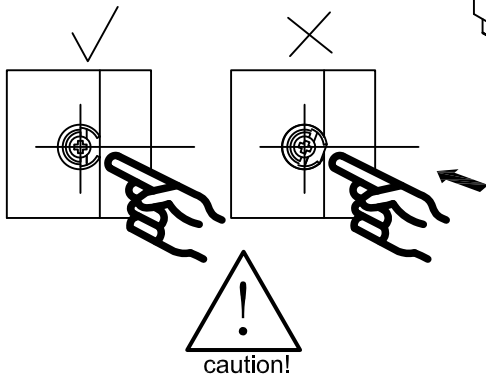
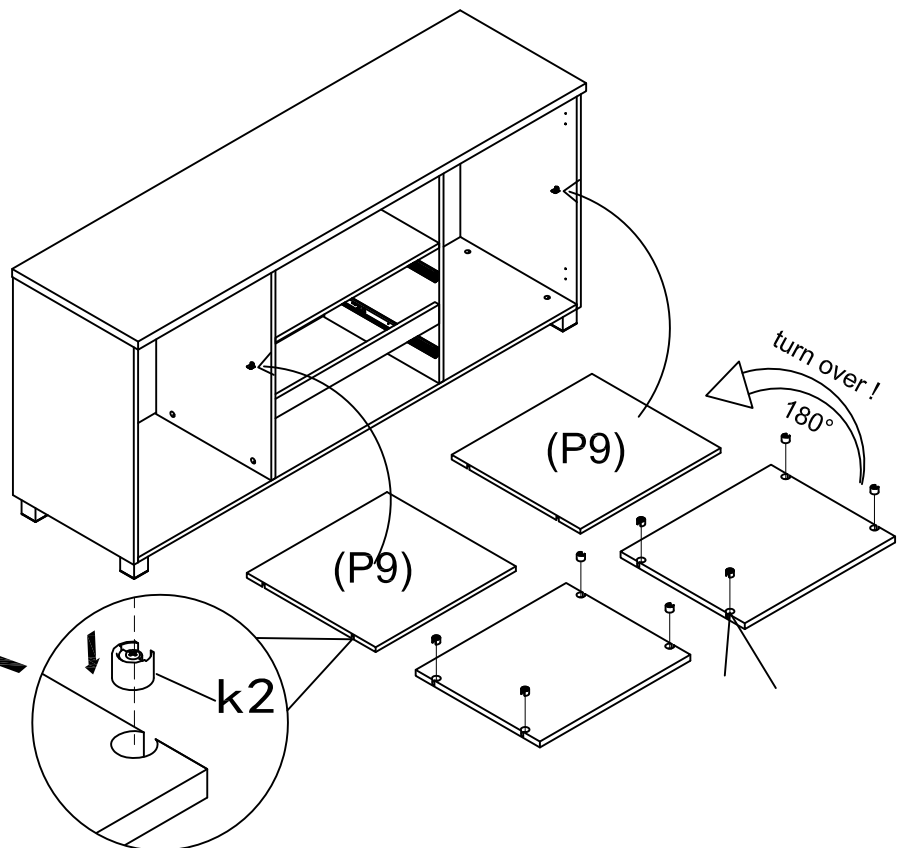
You will need		
K1	K3	
8 x Shelf Support Fitting (H16)		Phillips head screwdriver



Insert 8 x Shelf Support Fitting (H16-K1) onto the Left Side Panel (P3) and Right Side Panel (P4) and Middle Side Panel (P5,P6) by using 8 x Shelf Support Fitting (H16-K3).

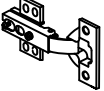
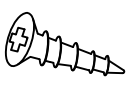

## Step 10

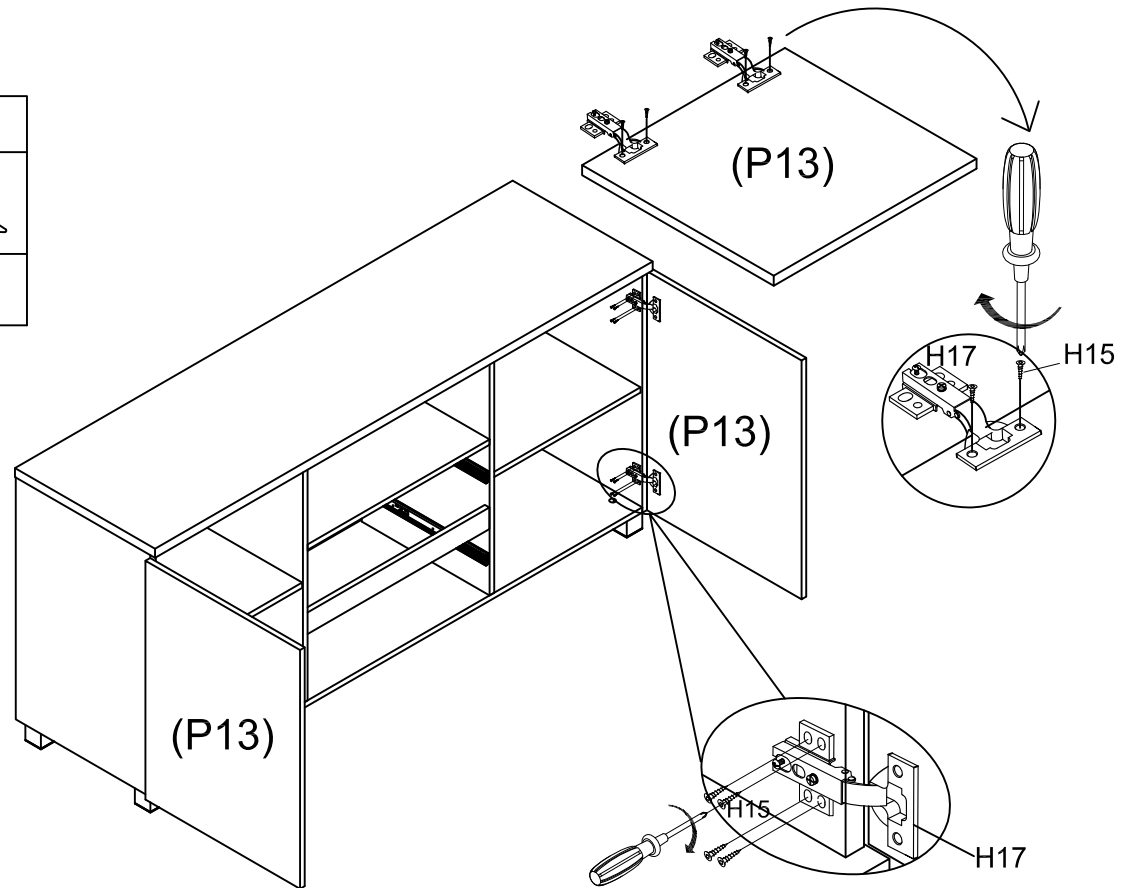
You will need	
K2	
8 x K:Shelf Support Fitting (H16)	Phillips head screwdriver



Insert 8 x Shelf Support Fitting (H16-K2) onto the Shelf Panel (P9) make sure the opening on Shelf Support Fitting is facing to the panel edge. Turn the panel down then position to the Shelf Support Fitting (H16-K1).

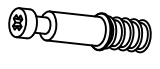


## Step 11

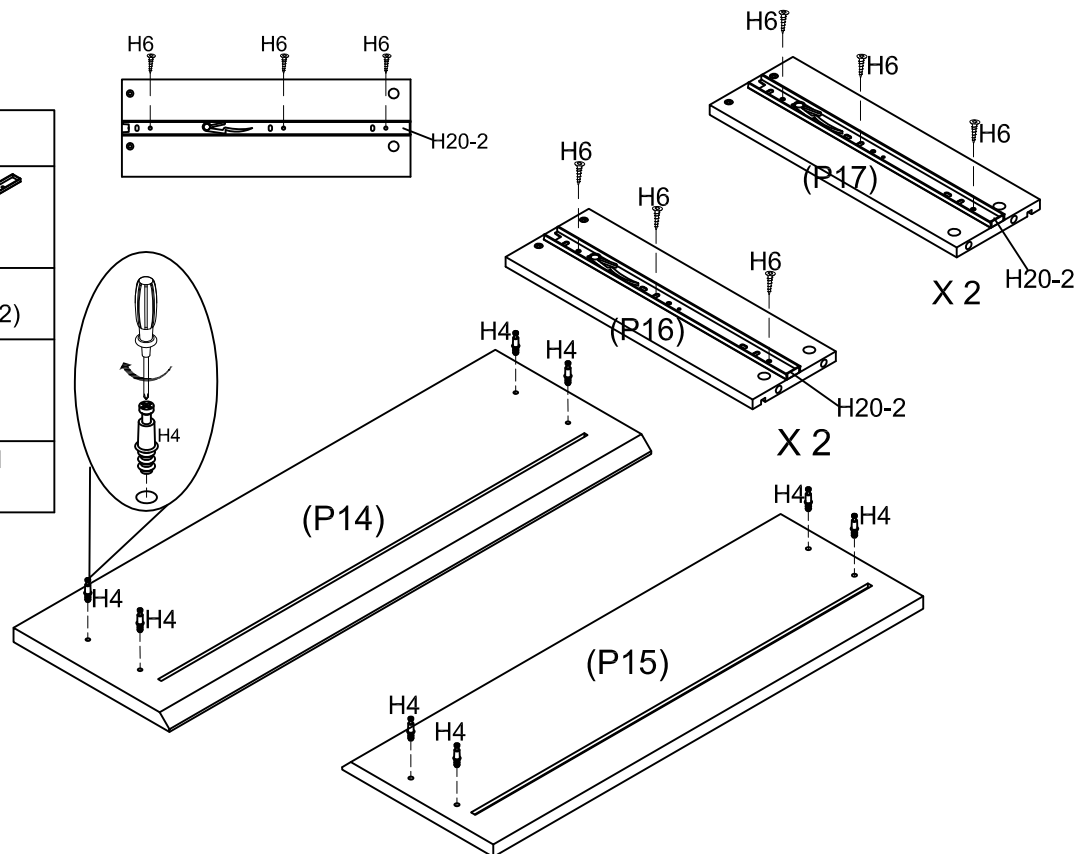
You will need	
	
4 x Hinges (H17)	24 x Screw (H15)
	
Phillips head screwdriver	



Attach 4 x Hinges (H17) onto the Door Panel (P13) by using 8 x Screw (H15). then attach 4 x Hinges (H17) to the Side Panel (P3,P4) by using 16 x Screw (H15).

## Step 12

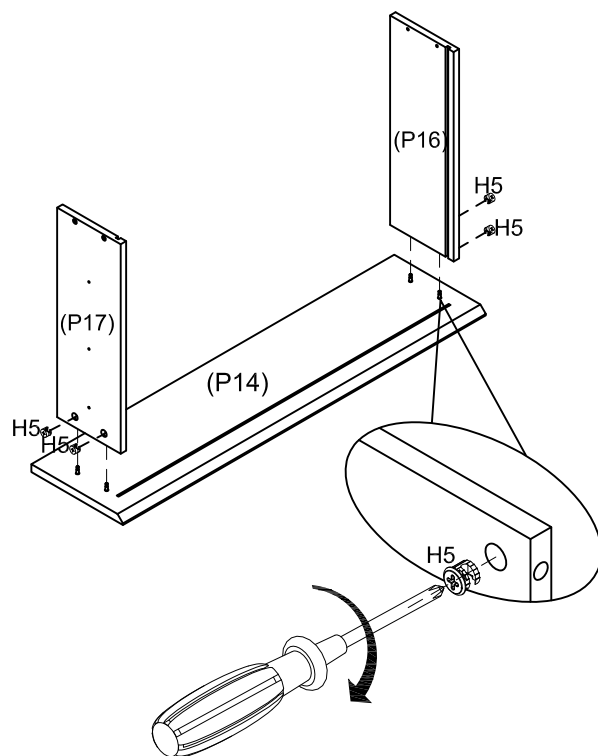
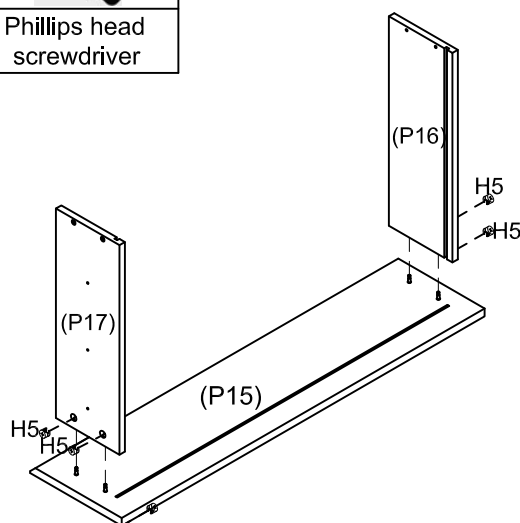
You will need	
	
8 x Small Cam Bolt (H4)	4 x Slide Runner (H20-2)
	
12 x Screw (H6)	Phillips head screwdriver



Screw 8 x Small Cam Bolts (H4) onto Drawer Front Panel (P14,P15)  
Attach 4 x Slide Runner (H20-2) to Drawer Side Panel (P16,P17) by using 12 x Screw (H6) as shown.

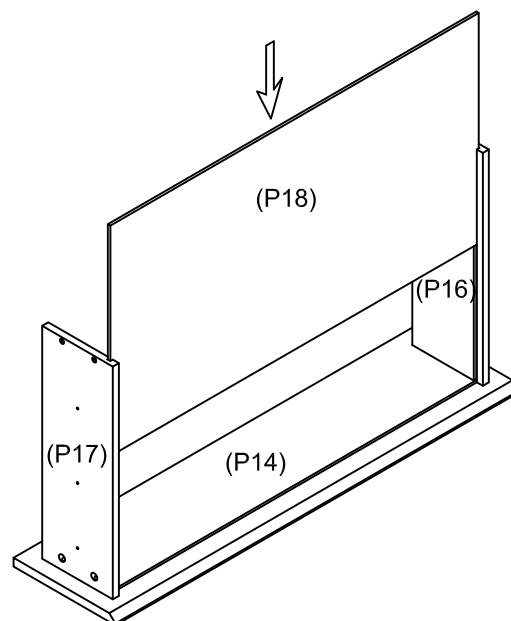
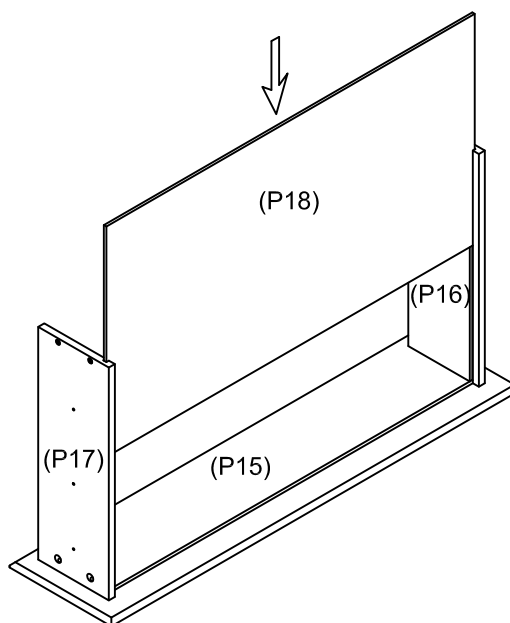
## Step 13

You will need	
	
8 x Small Cam Nuts (H5)	Phillips head screwdriver





Position the 2 x Drawer Left Side (P16) and 2 x Drawer Right Side (P17) to the Drawer Front (P14,P15), insert 8 x Small Cam Nut (H5) into the holes on Panel (P16,P17) as shown, make sure the opening on cam nut is facing incoming cam bolts, turn clockwise to lock.

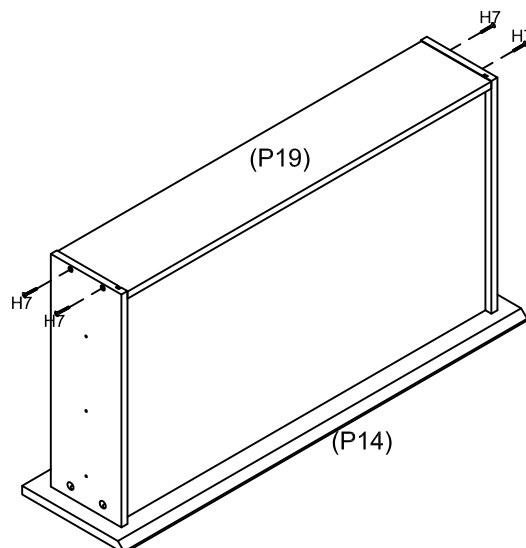
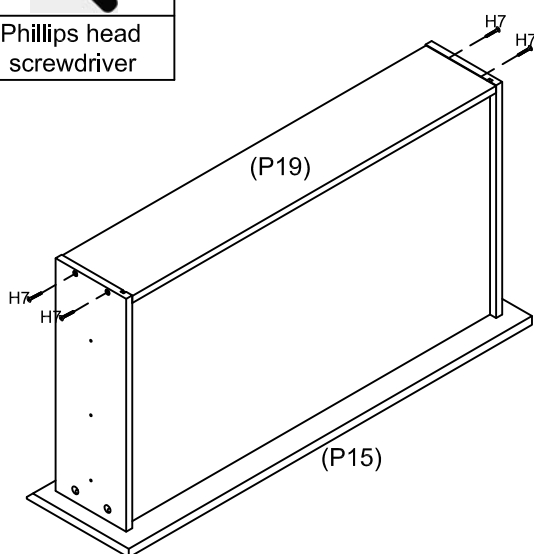
## Step 14



Insert the Drawer Bottom Panel (P18) into the grooves of the Drawer Front (P14,P15) and Drawer Left side Panel (P16) and Drawer Right side Panel (P17).

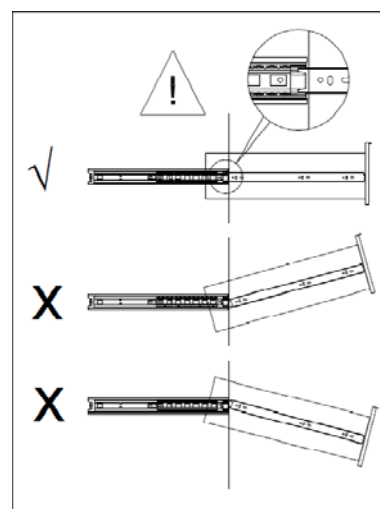
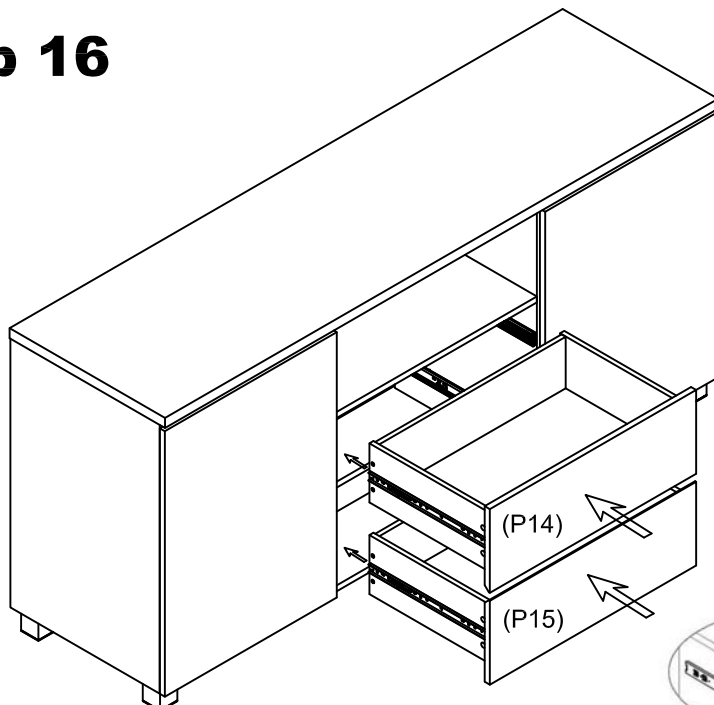
## Step 15

You will need	
	
8 x Screw (H7)	Phillips head screwdriver



Screw the 2 x Drawer Back Panel (P19) to the Drawer Left Side (P16) and Drawer Right Side (P17) by using 8 x Screw (H7).

## Step 16



Move Inner Ball Bearing Track outward.









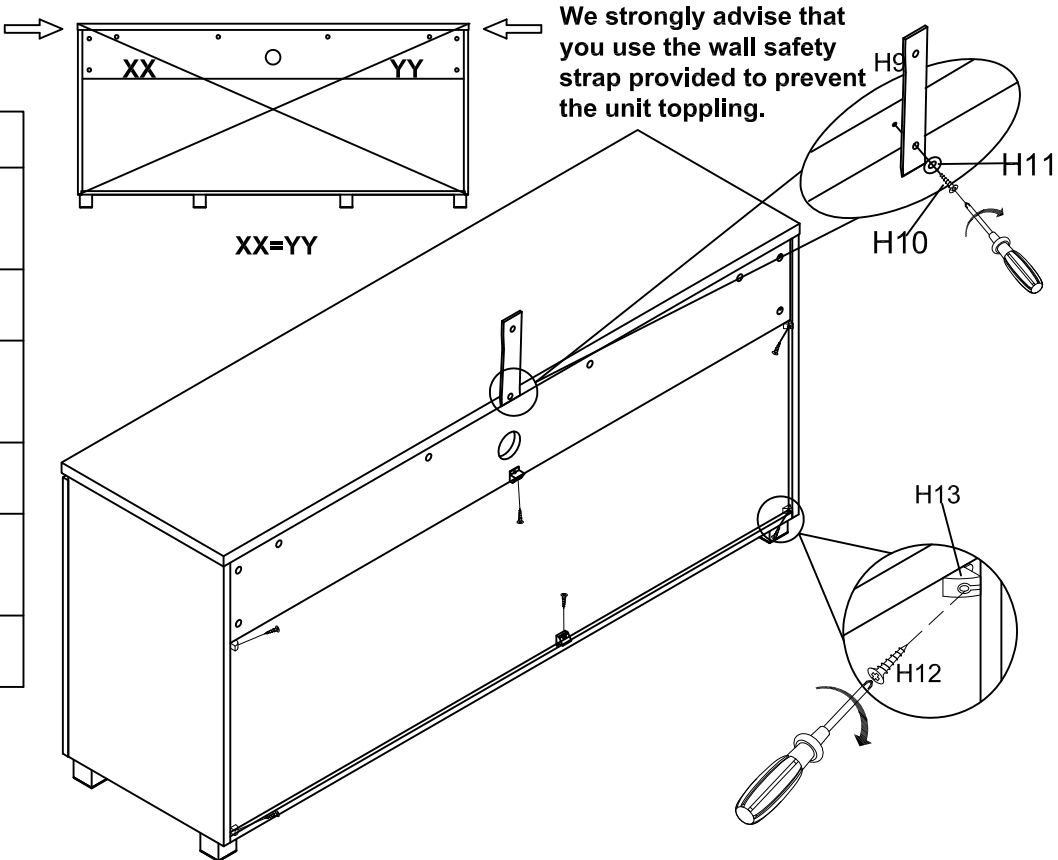
Gently Insert Slide Runner into Ball Bearing Track.



Position Drawer so that Slide Runner (H20-2) aligns with Slide Track (H20-1) as shown  
Gently push drawer into the closed position.

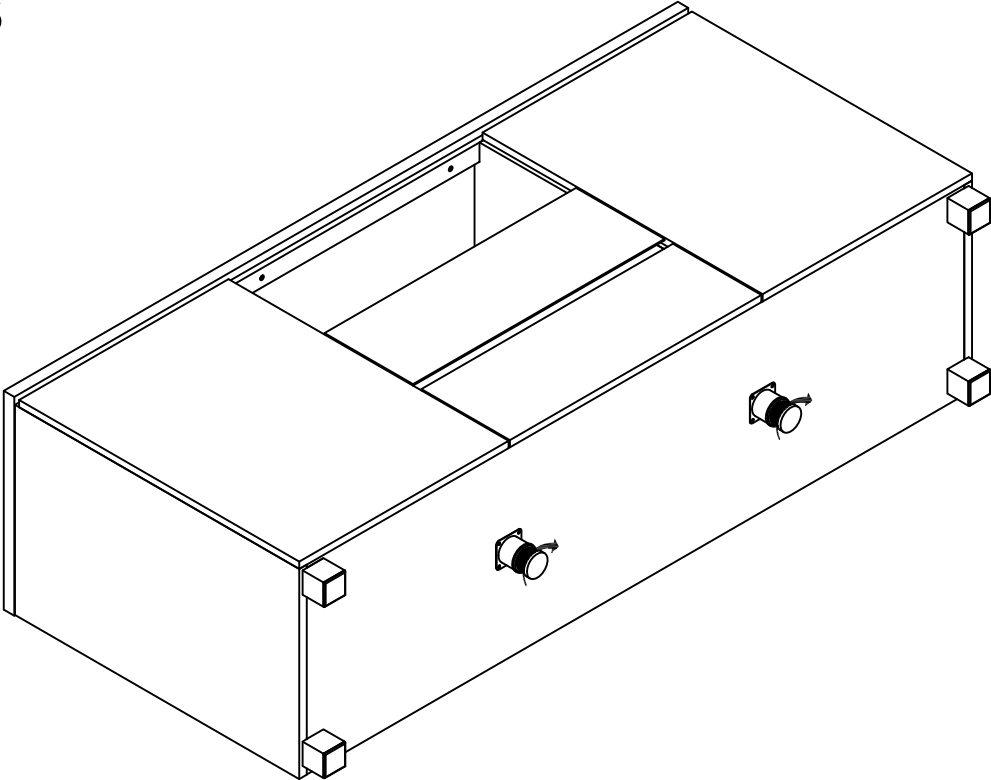
# Step 17

You will need	
	
1 x Wall strap (H9)	1 x Screw (H10)
	
1 x Washer (H11)	6 x Back panel holders (H13)
	
6 x Screw (H12)	Phillips head screwdriver




If necessary,gently adjust the Top Panel (P1) sideways in either direction untill XX and YY are equal  
Slide 6 x Back Panel holders (H13) into the grooves as shown.Insert 6 x Screw (H12) to fix them into place.Tighten the Screw (H12) with a Phillips Head Screwdriver  
Tighten the Wall Strap (H9) to the Top Panel (P1) with Screw (H10) and Washer (H11).

# Step 18



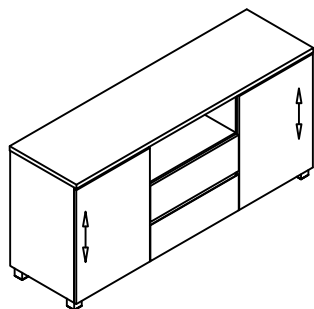
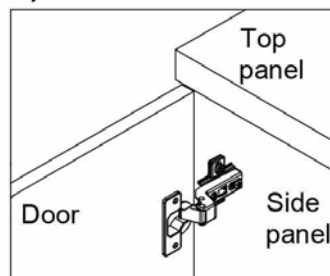
If the floor is uneven,  
please twist the adjustable leg to stabilize the unit.

# Step 19

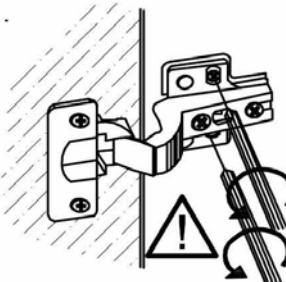
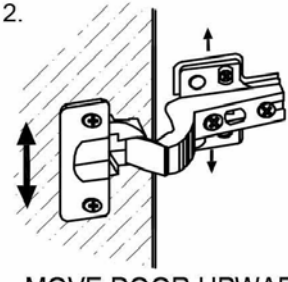
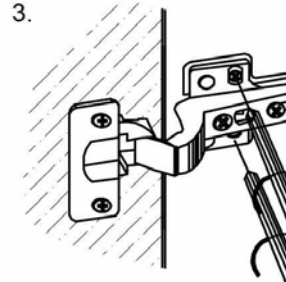
You will need	
	
Phillips head screwdriver	

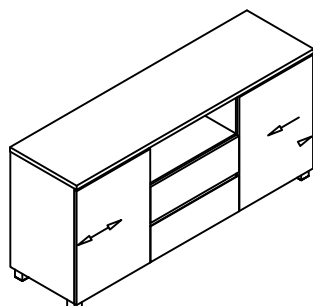
**TO ADJUST YOUR DOORS TO MAKE THE GAPS MORE EVEN (OPTIONAL).**

## STEP 19.1 Open the door.

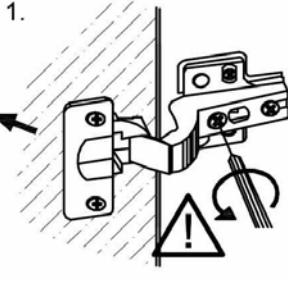
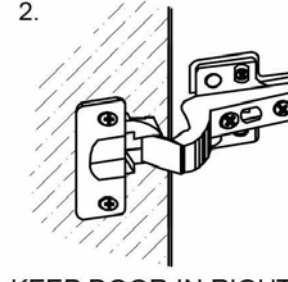
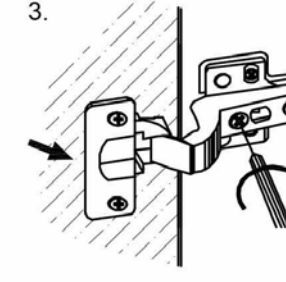


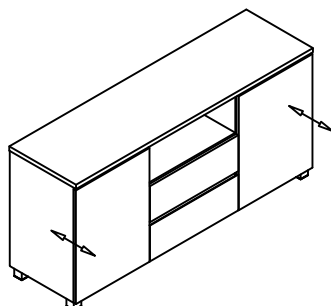
**STEP 19.2**  
Adjust the door panels  
upward or downward

-   
Unscrew 2 screws in round holes  
Loosen 2 screws in oval holes  
a bit.
-   
**MOVE DOOR UPWARD  
OR DOWNWARD**
-   
Tighten 2 screws in oval holes.  
Screw in 2 screws in round holes

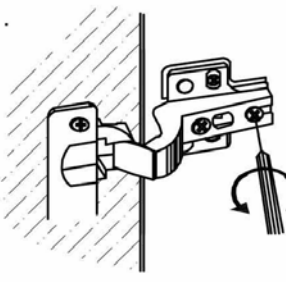
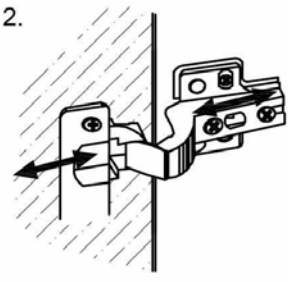
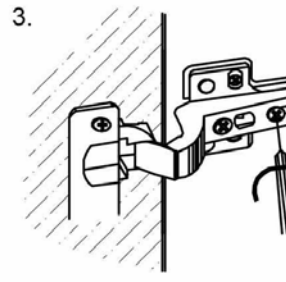


**STEP 19.3**  
Adjust the flush between  
door panel and side panel

-   
**MOVE DOOR OUTWARD**  
by turning this screw  
counter-clockwise
-   
**KEEP DOOR IN RIGHT  
POSITION**
-   
**MOVE DOOR OUTWARD**  
by turning this screw  
clockwise



**STEP 19.4**  
Adjust the gap between  
door panel and side panel

-   
Loosen this screw a bit.
-   
**MOVE DOOR BACK OR  
FORTH**
-   
Re-tighten this screw.



## Step 20

You will need

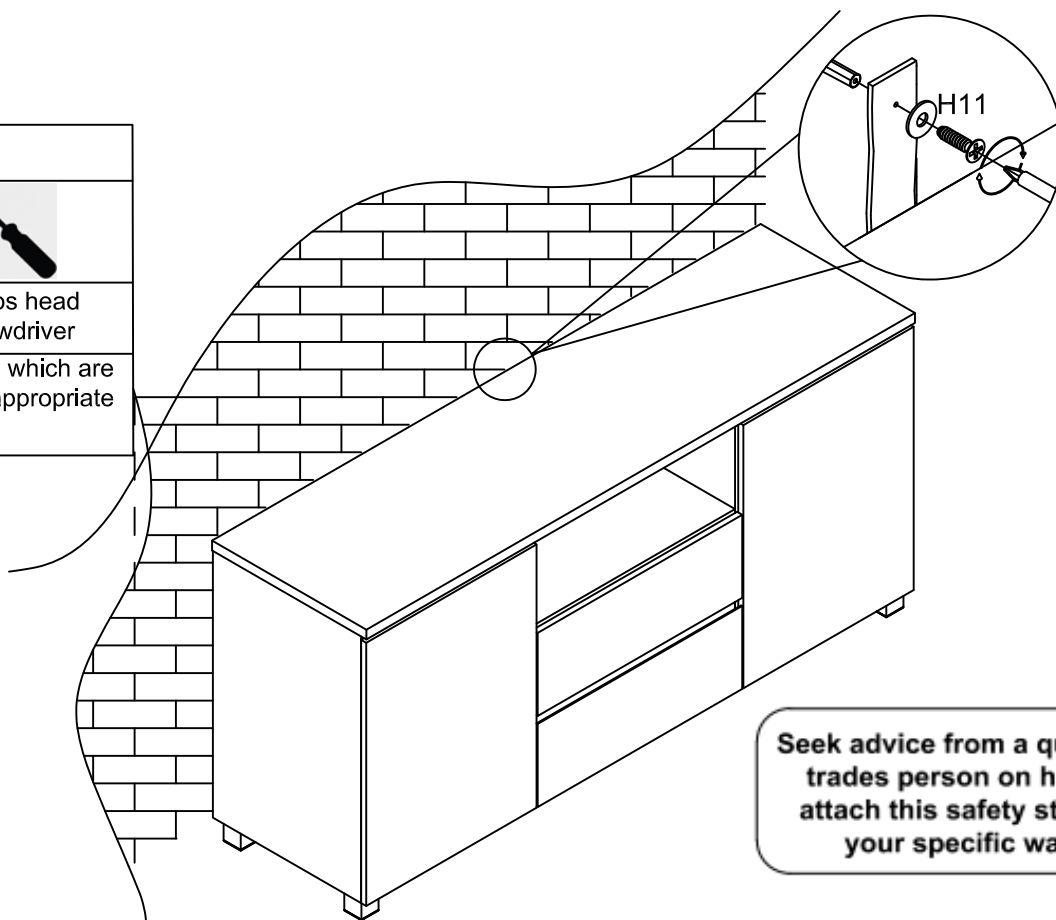


1 x Washer  
(H11)



Phillips head  
screwdriver

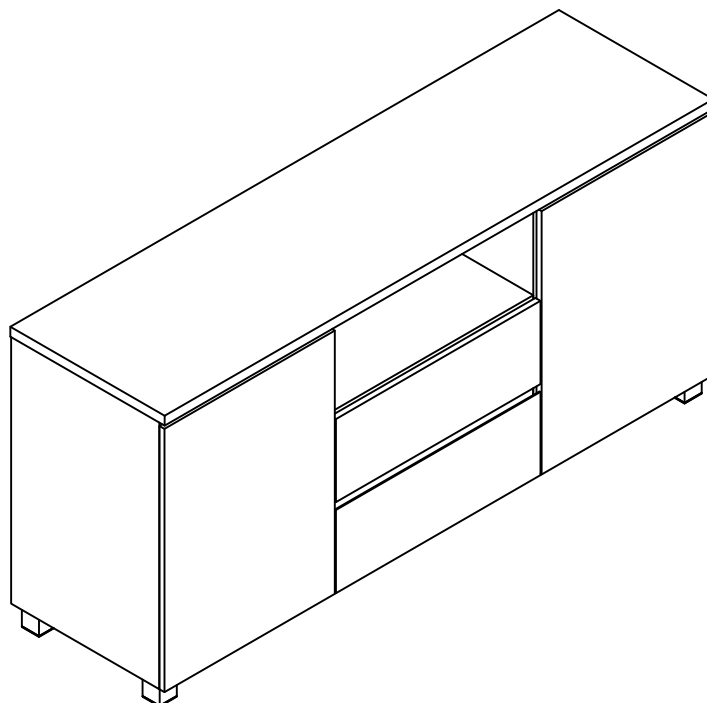
Wall Screw and Wall Plug which are not provided, Please use appropriate fixtures for your wall.



Seek advice from a qualified trades person on how to attach this safety strap to your specific wall.

Move the Buffet to the final position, and attach the wall strap to the wall securely. Make sure it is firmly attached and snug fit.

## Step 21



# Job Complete!

In the interest of our environment please dispose of all packaging thoughtfully.



**THIS TOP IS FINISHED WITH A CLEAR PU LACQUER**

Avoid placing hot items directly onto the surface unless using a thick insulation material such as placemats or coasters. Heat may lead to discolouration or other damage to the surface of the product.

Use a soft cloth that has been dampened in water to clean the surface of this product. Do not use abrasive cleaners, furniture wax or polish on the surface of this product, as it may damage the surface.

**CAUTION: FREQUENT EXPOSURE TO DIRECT SUNLIGHT OR SIMILAR SOURCES MAY CAUSE THE SURFACE TO DISCOLOUR OR FADE.**