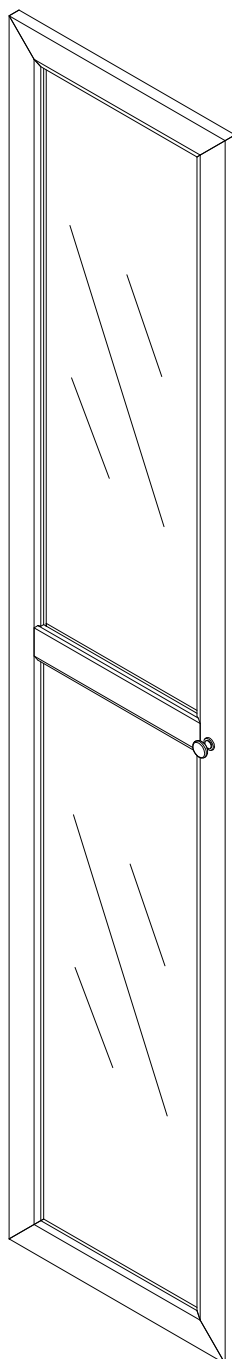


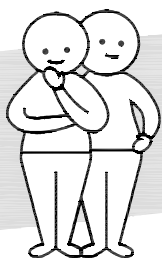


**Fantastic
Furniture**

Version 1.0



Two People



Required

Kobi

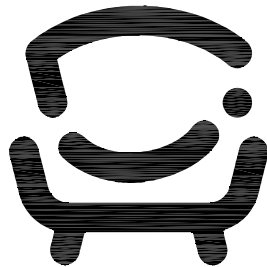
Bookcase Large Narrow Glass Door

www.fantasticfurniture.com.au

CAP146F0605J00-01

Looks like you've found your Fantastic!

We're thrilled you've chosen Fantastic Furniture
to help create a home you'll love



Fantastic Furniture

Love it? Share it!

Fantastic buy! Share how it looks at home for your
chance to win a \$250 Fantastic Furniture Gift Card!
@fantasticfurniture



Warning : Ensure the wall strap is attached to avoid serious injury.

To avoid any serious or fatal injury, this product has been fitted with a wall strap to prevent toppling. We strongly recommend that this product is permanently fixed to the wall or other suitable surface. Fixing devices are not included since different surface materials require different attachments. Please seek professional advice if you are in doubt of what fixing device to use.

Glass should always be handled with care

Scratches, chips, sudden changes in temperature and hairline fractures may cause the glass to break. This glass is designed to break into small, relatively harmless pieces and not sharp fragments..

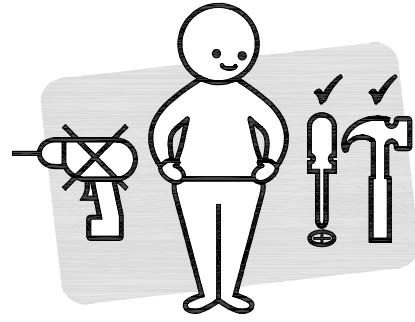
Avoid placing hot or cold items directly onto the table unless using a thick insulation material such as placemats or coasters.

Avoid dropping objects onto the glass. Do not allow hard or pitted objects to come into contact with the glass. Never use the top area as a chopping surface. Do not sit or stand on the glass surface.

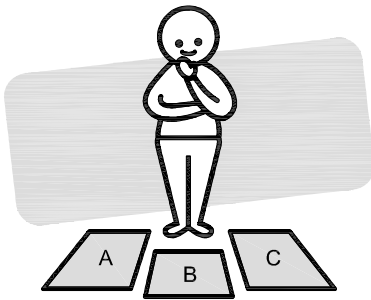
Assembly Checklist



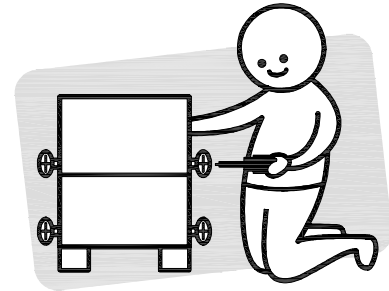
Read through the instructions carefully before you begin.



Make sure you have all the required tools. Never use power tools unless instructed.



Identify and lay out all of the components before you begin assembly.



Unless instructed, do not fully tighten screws until the item is fully assembled.

Useful Information

- ! Never use power tools unless specifically instructed. They can damage your components or hardware if used incorrectly.
- ! The most common mistakes made during assembly are using the wrong hardware or getting components back to front.
- ! Always use a soft surface (such as carpet or cardboard) when assembling your product to avoid scratching or damaging the surface of the product.
- ! Bulky items such as wardrobes and bunk beds should be assembled in the room they will be used in as they may not fit through a door once assembled.
- ! Never use any glue until you are certain that the parts belong together.
- ! Periodically check and re-tighten all fasteners. Check the product care label or website for product care instructions.
- ! If you are having any difficulties assembling your product, missing any hardware or components please visit our website Help Centre for further assistance.
- ! Please see page 2 for any safety requirements or weight restrictions.

What You Need

to assemble the product



DO NOT USE

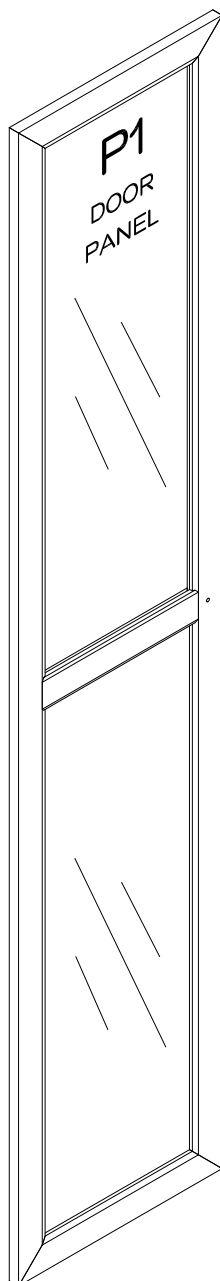


Other Tools You Need

Phillips head screwdriver

Parts List

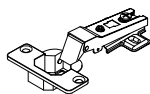
Box 1: Door Panel (P1) x 1



8 × Hinge
Screws
(H1)



8 × Hinge
Plate Screws
(H2)



4 × Hinges
(H3)

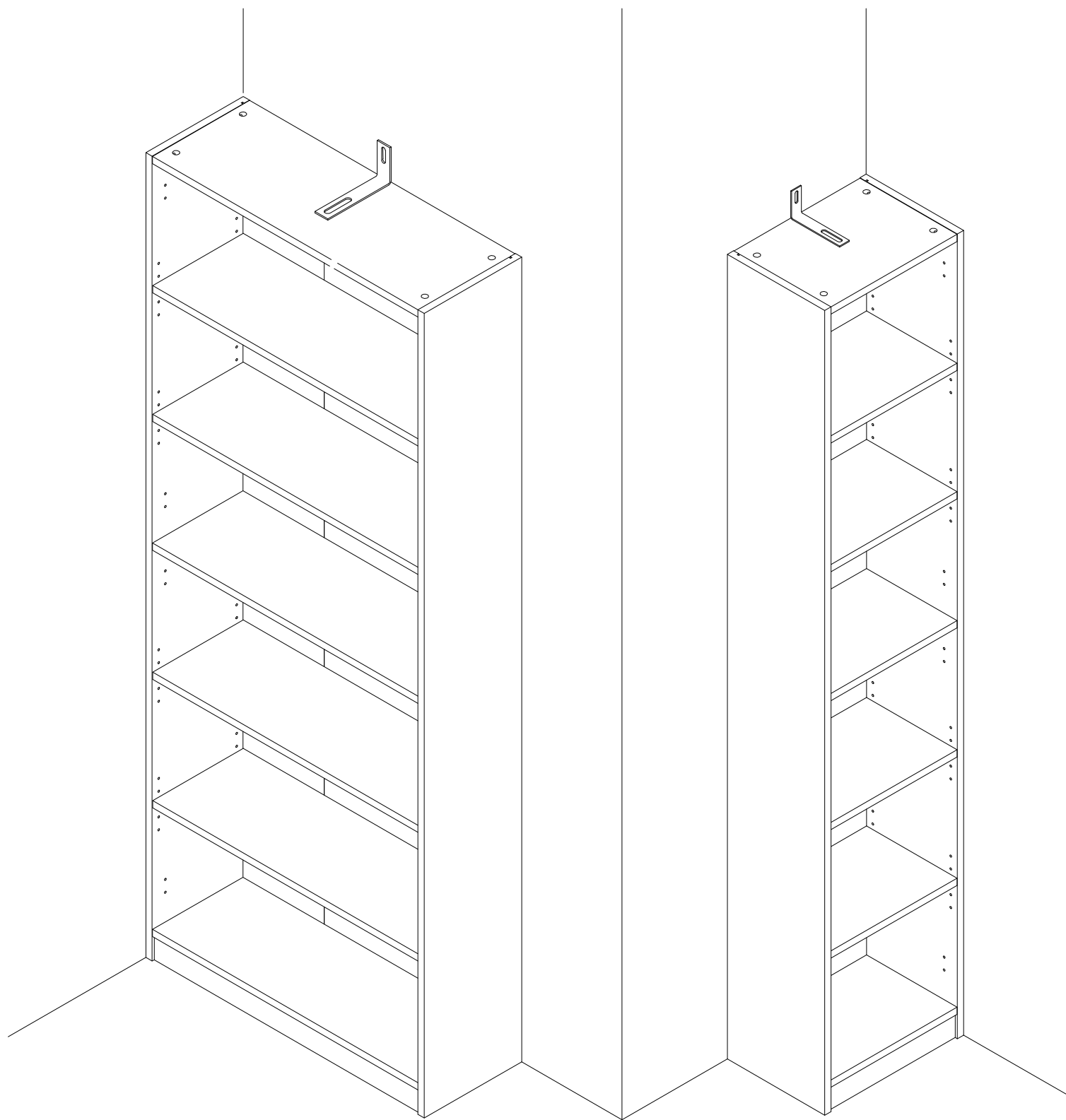


2 × Soft Close
Pads
(H4)



1 × Handle
+ Screw Set
(H5)

Step 1


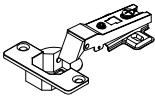

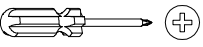


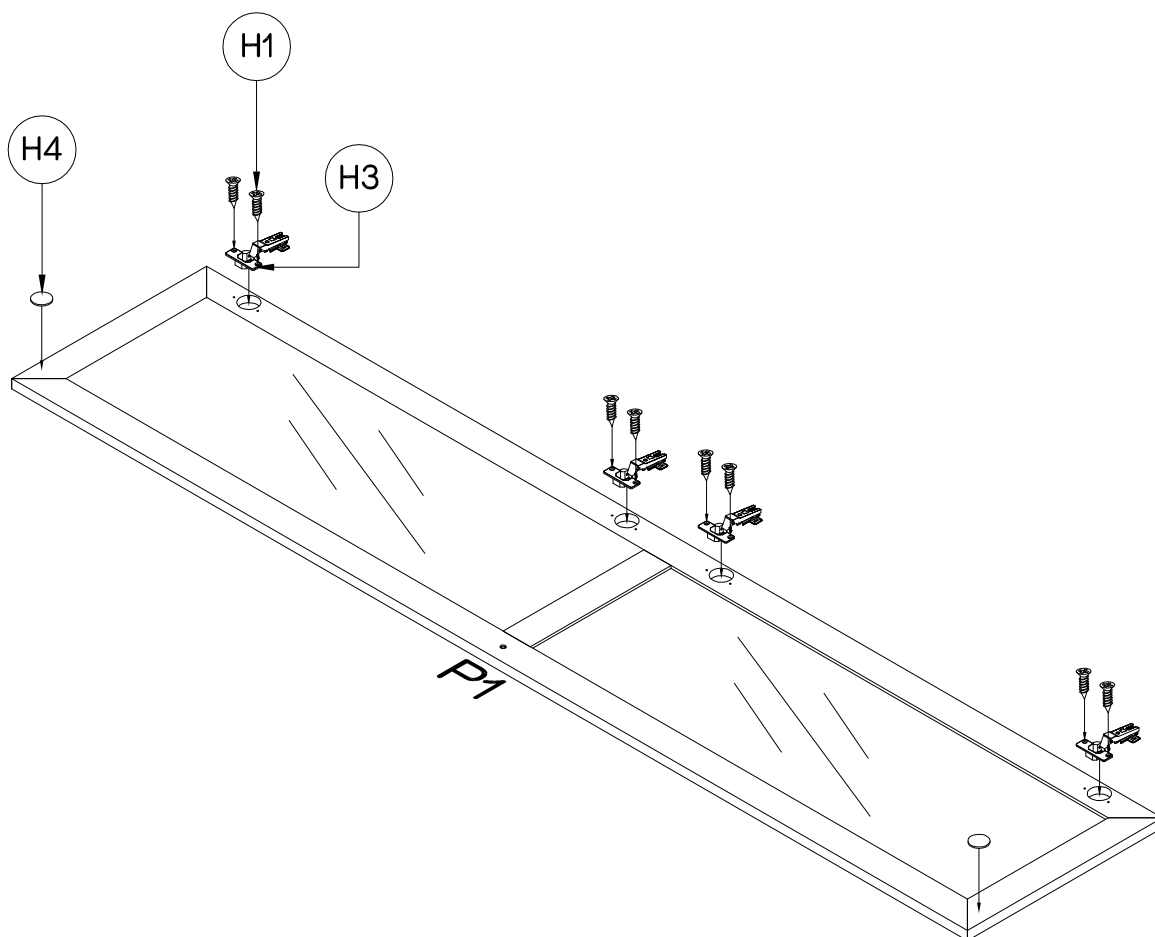
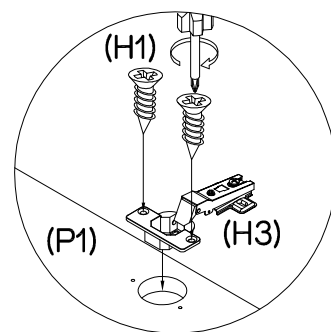
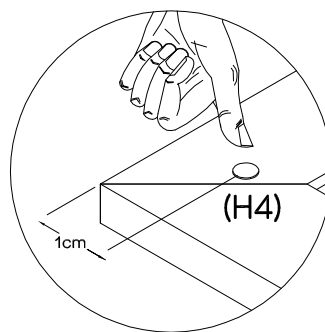
Kobi Bookcase
Large Wide

Kobi Bookcase
Large Narrow

Ensure that your Kobi Bookcase is secured to the wall with the Wall Bracket provided.

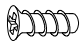

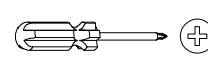
Step 2

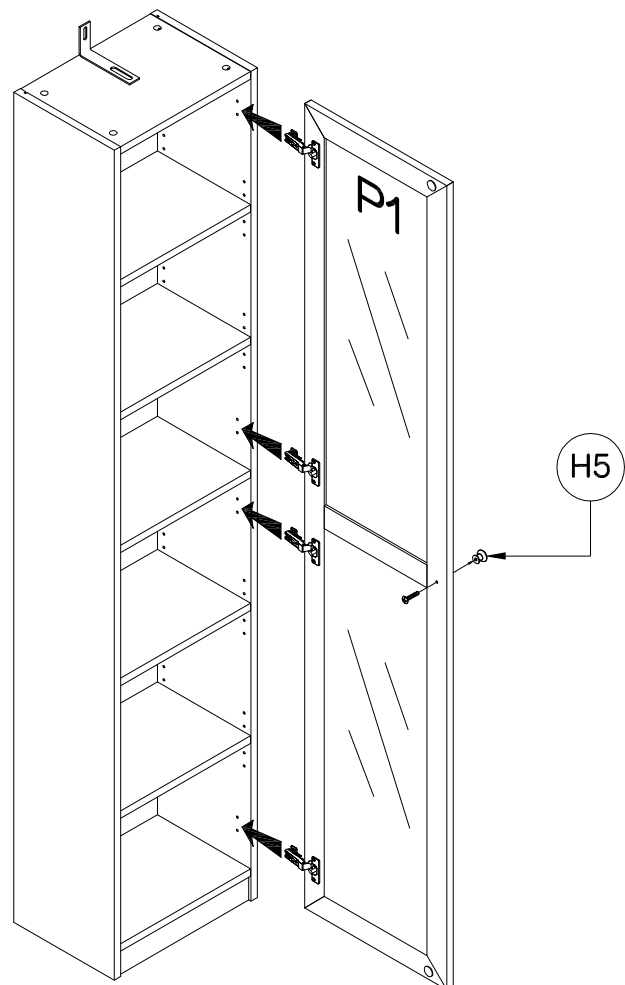
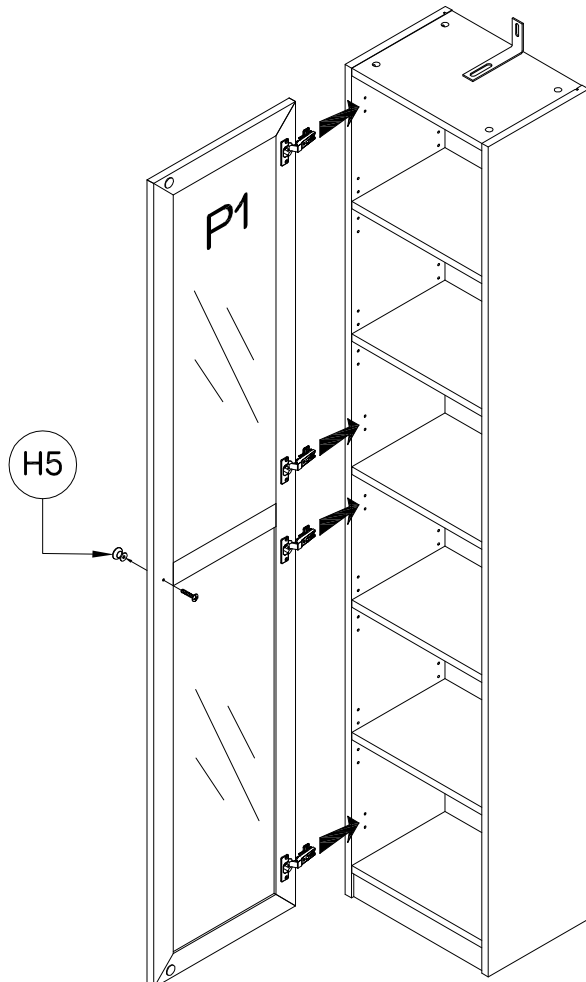
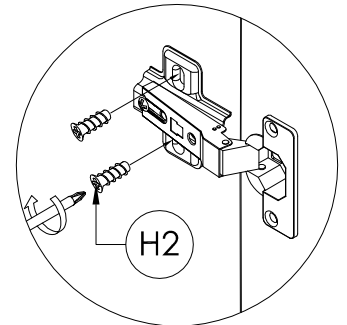
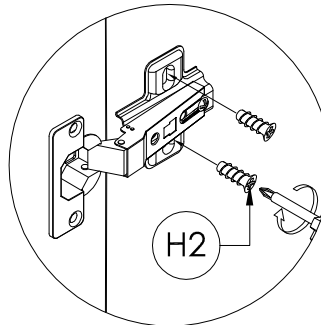
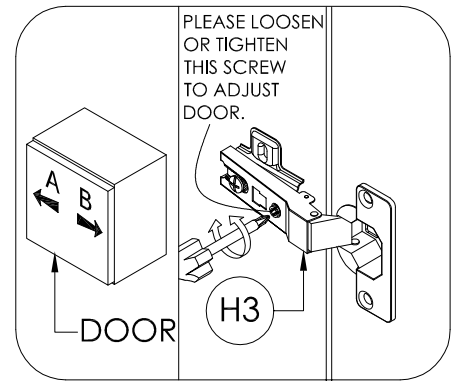
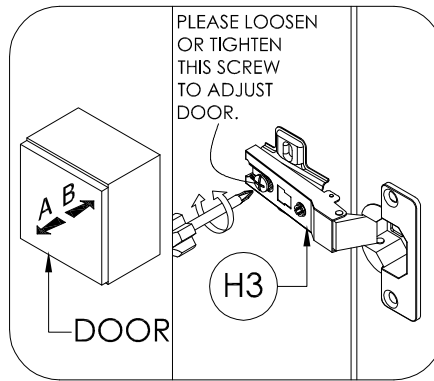
You will need	
	
8 × Hinge Screws (H1)	4 × Hinges (H3)
	
2 × Soft Close Pads (H4)	Phillips Head Screwdriver



Secure 4 x Hinges (H3) to Door Panel (P1) with 8 x Hinge Screws (H1) by tightening with the Phillips Head Screwdriver.
Attach 2 x Soft Close Pads (H4) to the corners of Door Panel (P1) as shown.

Step 3 - Kobi Bookcase Large Narrow

You will need	
	
8 × Hinge Plate Screws (H2)	1 × Handle +Screw Set (H5)
	
Phillips Head Screwdriver	

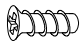

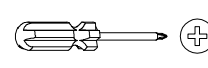


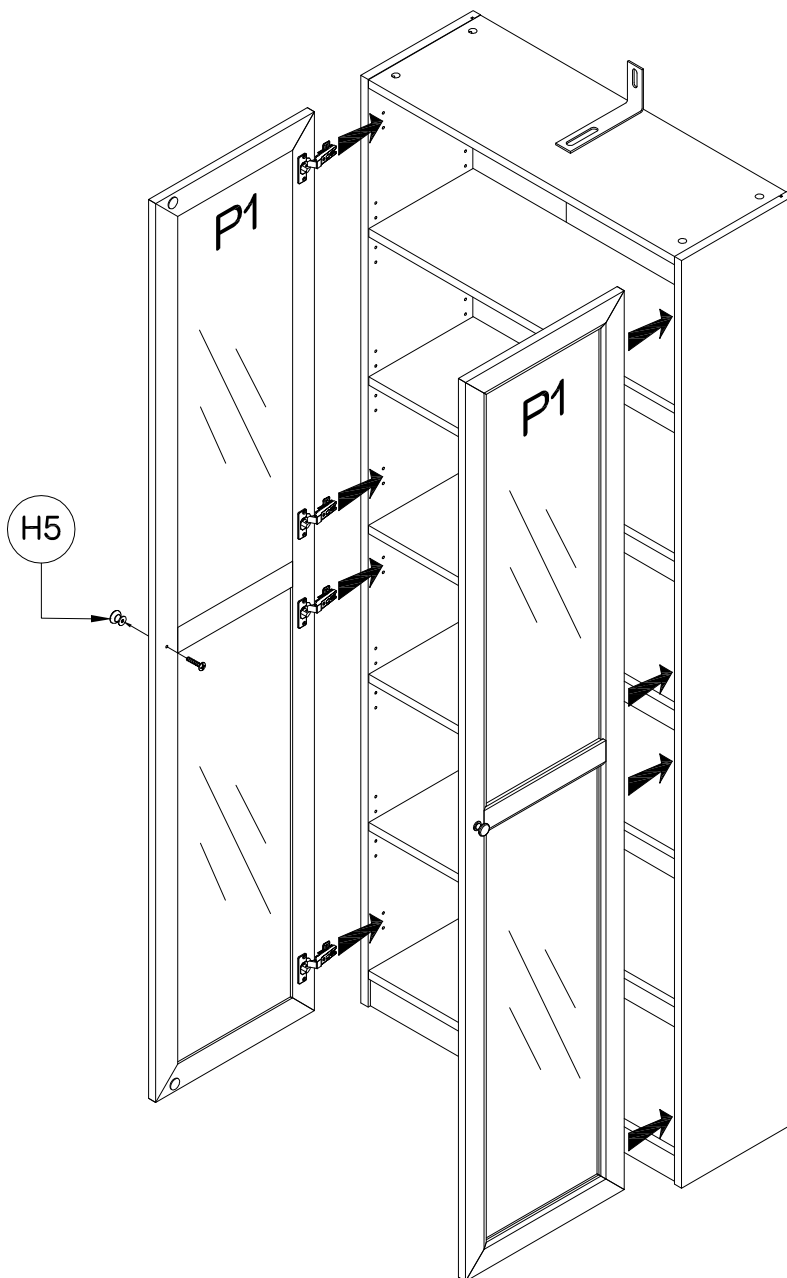
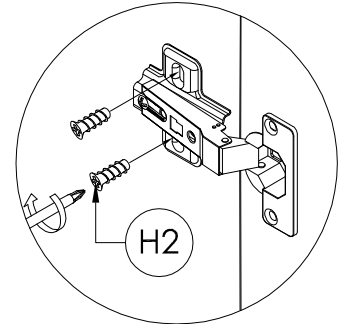
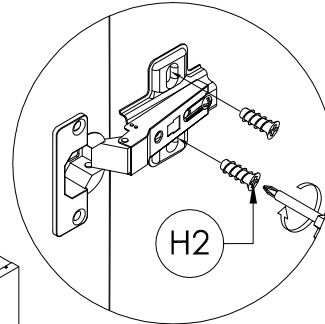
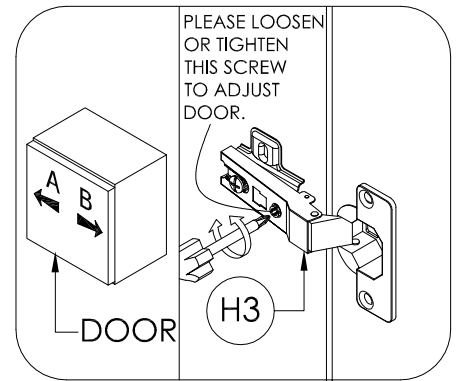
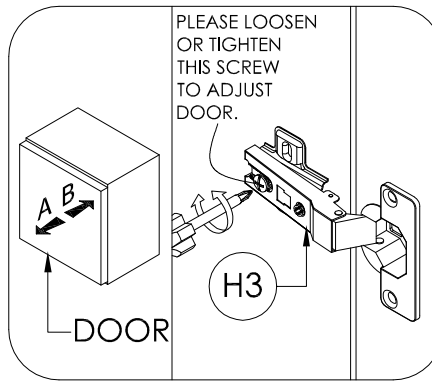
The Door Panel (P1) can be secured to open from either the left or right side of the Bookcase depending on your preference.

Secure Door Panel (P1) to the left or right side of the Bookcase with 4 x Hinges (H3) using 8 x Hinge Plate Screws (H2) by tightening with the Phillips Head Screwdriver.

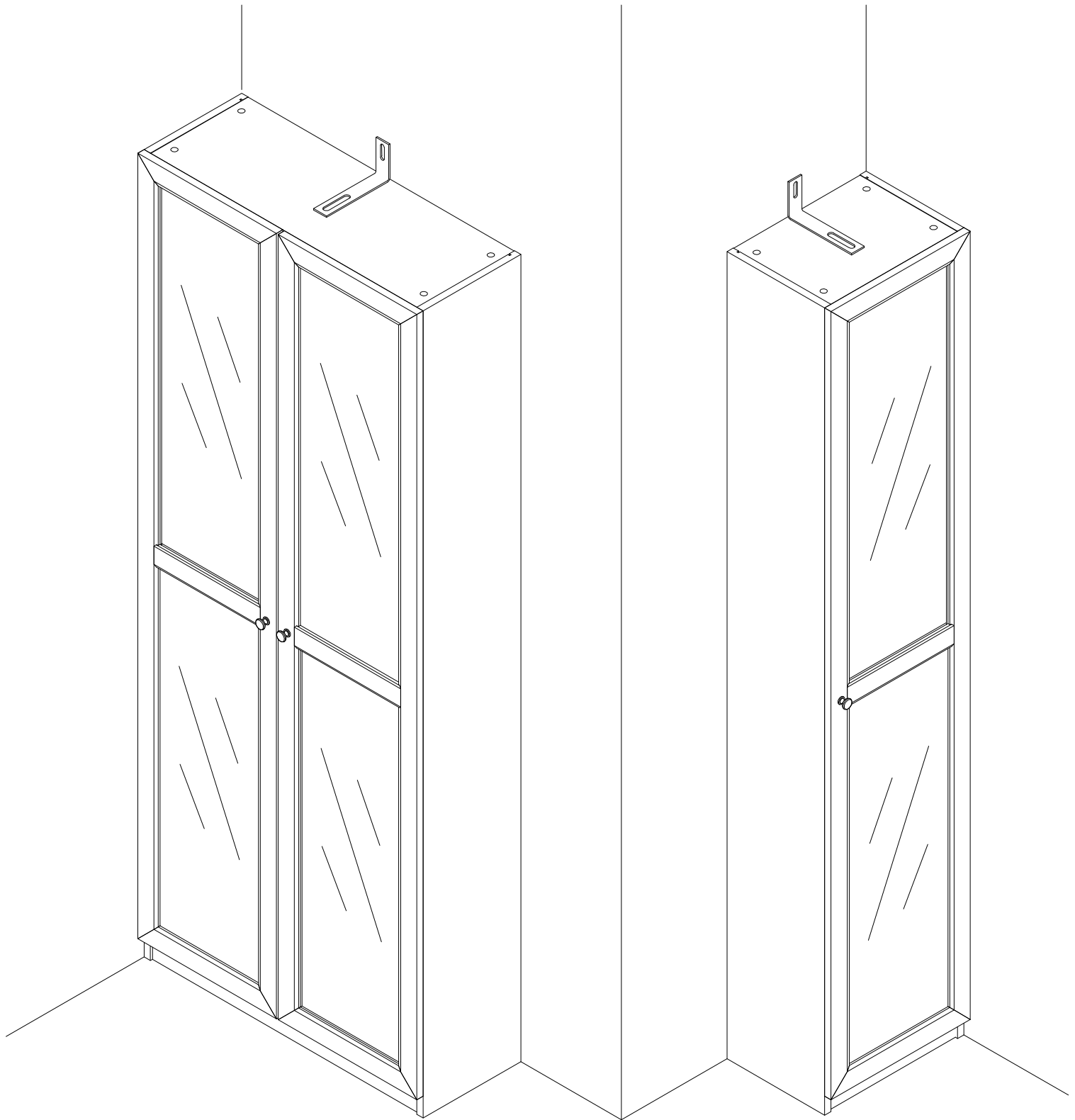
Attach the Handle & Screw Set (H5) to Door Frame (P1) by tightening Screw with the Phillips Head Screwdriver.

Step 3 - Kobi Bookcase Large Wide

You will need	
	
16 × Hinge Plate Screws (H2)	2 × Handle +Screw Set (H5)
	
Phillips Head Screwdriver	



Ensure Hinges are attached to both sets of Doors as shown in Step 2.
Secure Door Panels (P1x2) to left & right sides of the Bookcase with 8 x Hinges (H3) using 16 x Hinge Plate Screws (H2) by tightening with the Phillips Head Screwdriver.
Attach the Handle & Screw Set (H5x2) to Door Frames (P1x2) by tightening Screws with the Phillips Head Screwdriver.



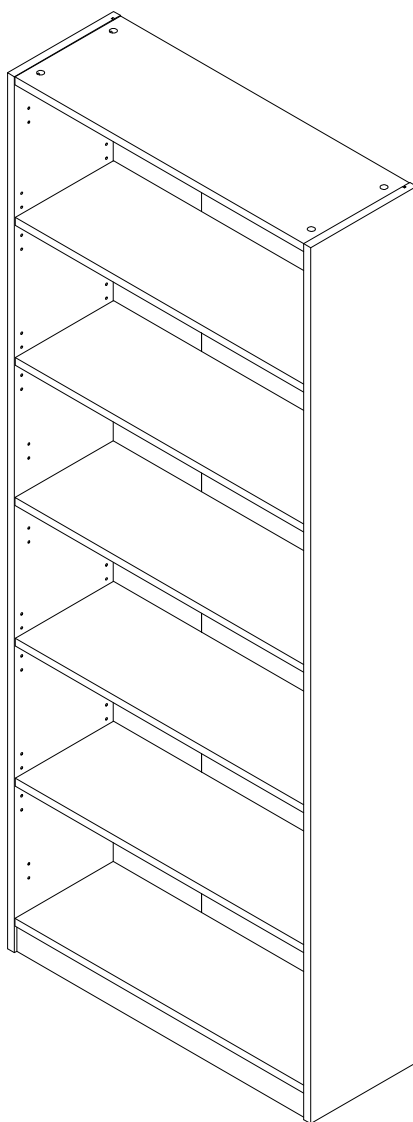
Job Complete!

In the interest of our environment please dispose of
all packaging thoughtfully.

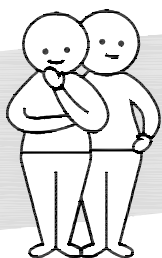


**Fantastic
Furniture**

Version 1.0



Two People



Required

Kobi

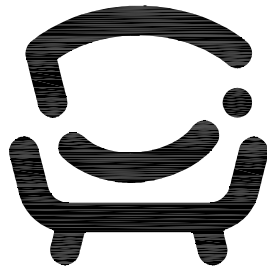
Bookcase Large Wide

www.fantasticfurniture.com.au

CA3334F0608J00-01

Looks like you've found your Fantastic!

We're thrilled you've chosen Fantastic Furniture
to help create a home you'll love



Fantastic Furniture

Love it? Share it!

Fantastic buy! Share how it looks at home for your
chance to win a \$250 Fantastic Furniture Gift Card!
@fantasticfurniture



Warning : Ensure the wall strap is attached to avoid serious injury.

To avoid any serious or fatal injury, this product has been fitted with a wall strap to prevent toppling. We strongly recommend that this product is permanently fixed to the wall or other suitable surface. Fixing devices are not included since different surface materials require different attachments. Please seek professional advice if you are in doubt of what fixing device to use.

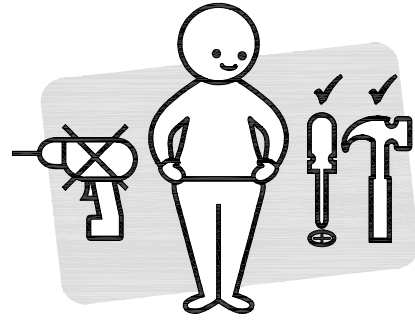
Weight Capacity : 15kgs / Shelf



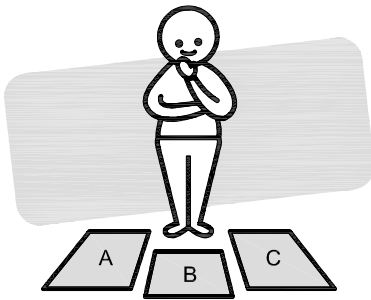
Assembly Checklist



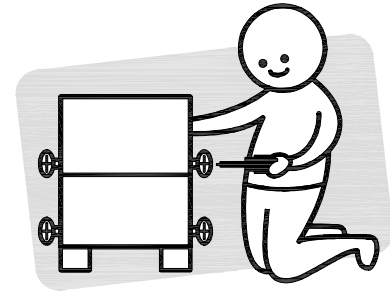
Read through the instructions carefully before you begin.



Make sure you have all the required tools. Never use power tools unless instructed.



Identify and lay out all of the components before you begin assembly.



Unless instructed, do not fully tighten screws until the item is fully assembled.

Useful Information

- ! Never use power tools unless specifically instructed. They can damage your components or hardware if used incorrectly.
- ! The most common mistakes made during assembly are using the wrong hardware or getting components back to front.
- ! Always use a soft surface (such as carpet or cardboard) when assembling your product to avoid scratching or damaging the surface of the product.
- ! Bulky items such as wardrobes and bunk beds should be assembled in the room they will be used in as they may not fit through a door once assembled.
- ! Never use any glue until you are certain that the parts belong together.
- ! Periodically check and re-tighten all fasteners. Check the product care label or website for product care instructions.
- ! If you are having any difficulties assembling your product, missing any hardware or components please visit our website Help Centre for further assistance.
- ! Please see page 2 for any safety requirements or weight restrictions.

What You Need

to assemble the product



DO NOT USE

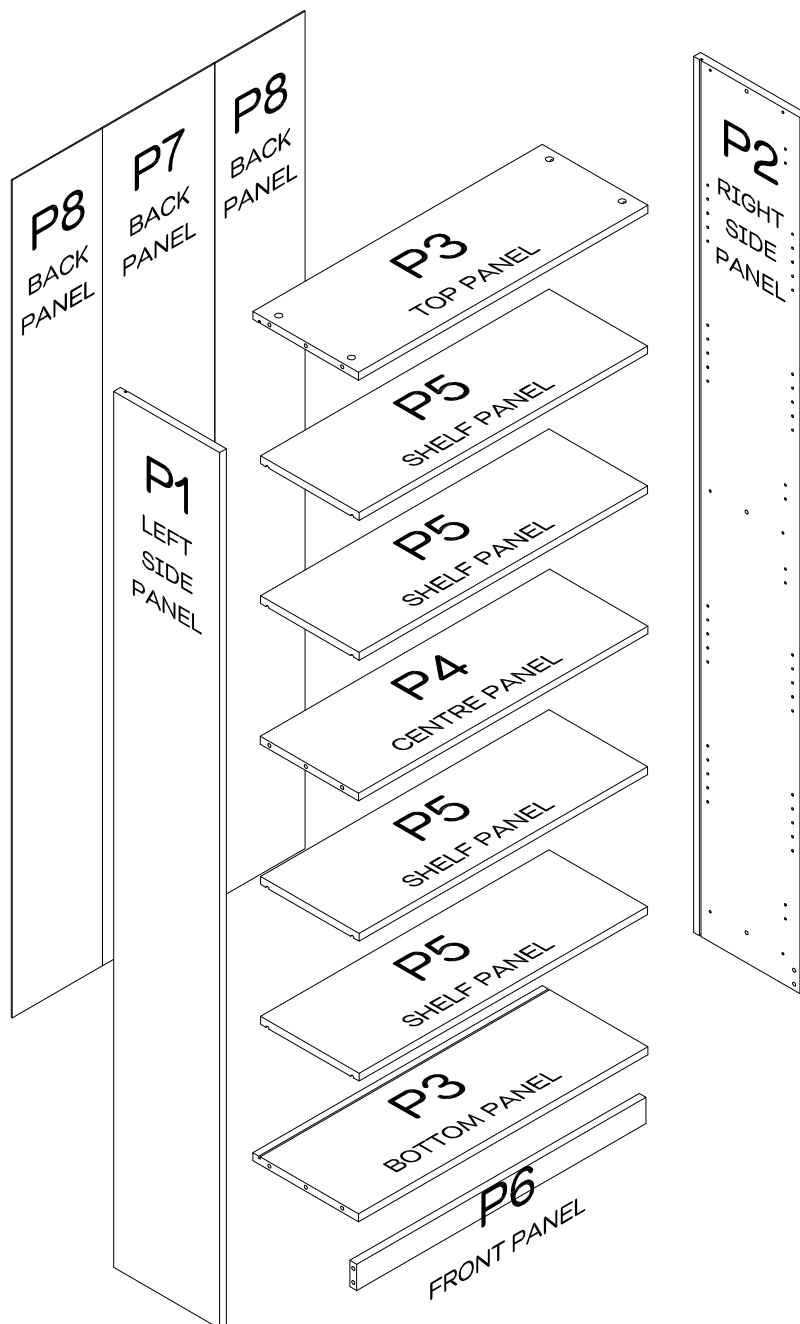


Other Tools You Need

Phillips head screwdriver; Hammer

Parts List

Box 1: Left Side Panel (P1) x 1;
Right Side Panel (P2) x 1;
Top/Bottom Panels (P3) x 2;
Centre Panel (P4) x 1;
Shelf Panel (P5) x 4;
Front Panel (P6) x 1;
Back Panel (P7) x 1 &
Back Panel (P8) x 2



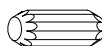
12 x Wedge
Screws
(H1)



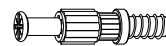
1 x Bracket
Screw
(H2)



2 x Washers
(H3)



10 x Dowels
(H4)



12 x Cam Bolts
(H5)



12 x Cam Nuts
(H6)



4 x Feet
Glides
(H7)



1 x Wall
Bracket
(H8)



16 x Shelf
Studs
(H9)



12 x Wedges
(H10)



7 x Nails
(H11)



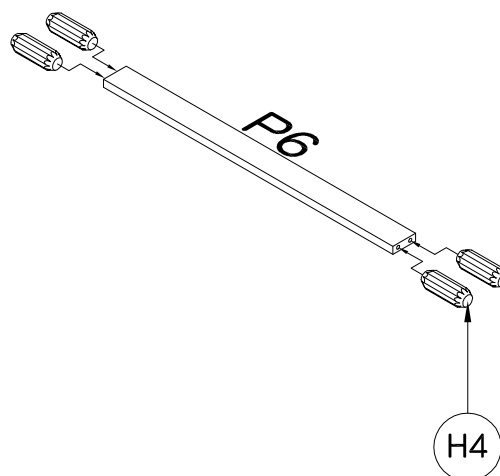
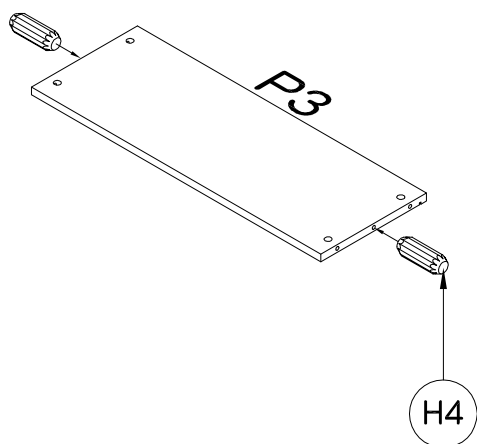
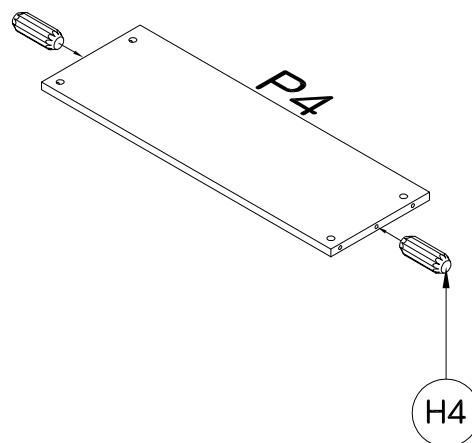
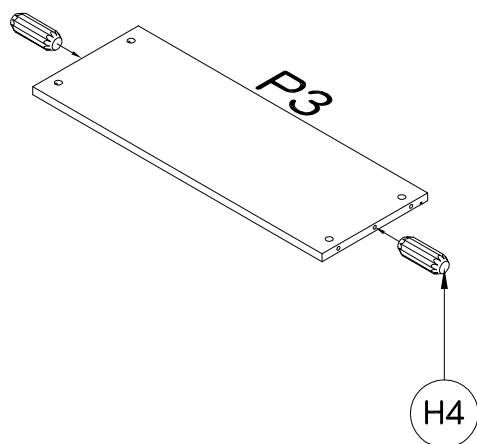
Fantastic
Furniture

Step 1

You will need



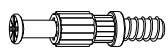
10 × Dowels
(H4)



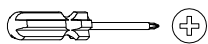
Insert 4 x Dowels (H4) into Top/Bottom Panels (P3x2), 2 x Dowels (H4) into Centre Panel (P4) and 4 x Dowels (H4) into Front Panel (P6).

Step 2

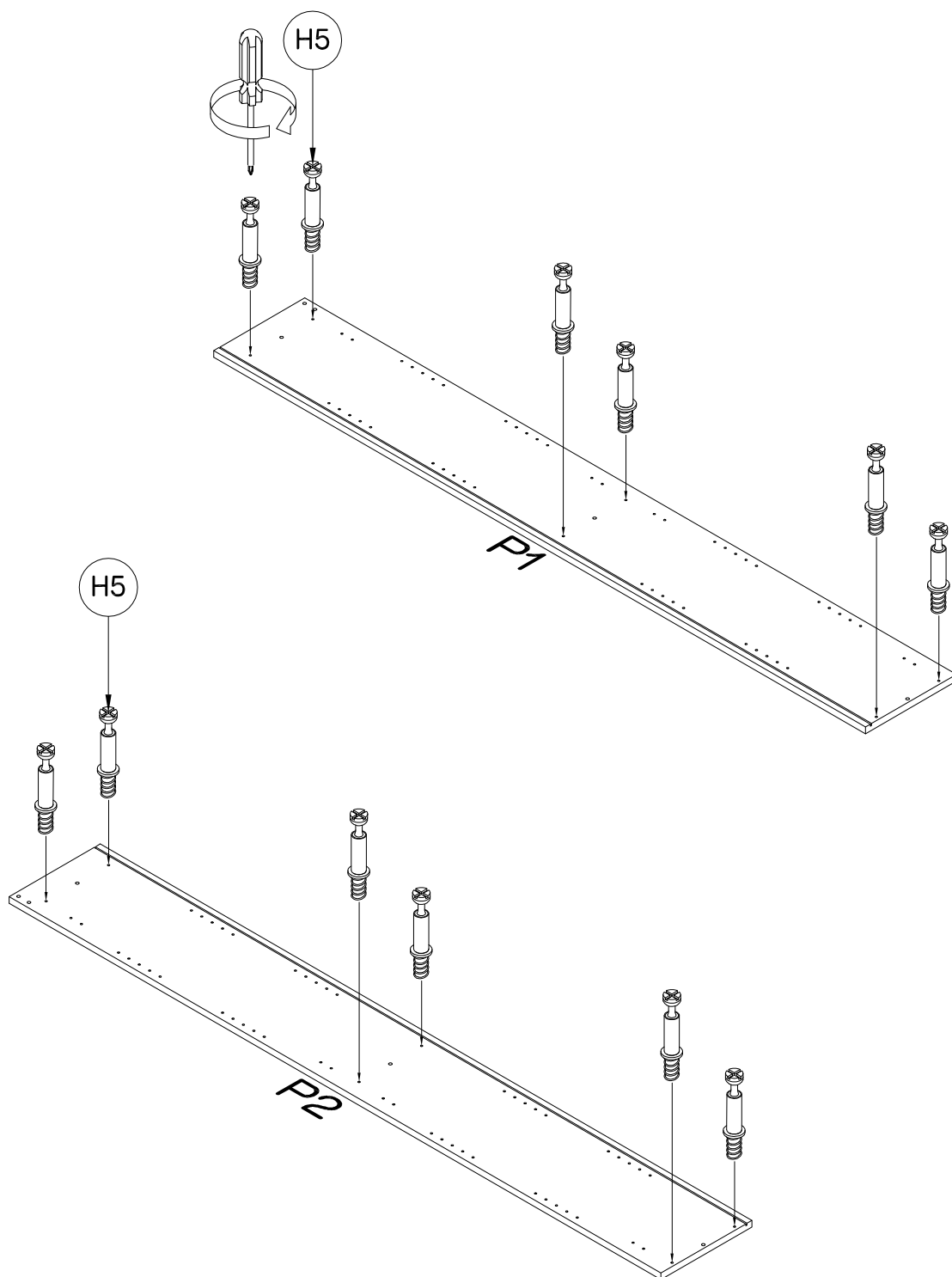
You will need



12 x Cam Bolts
(H5)

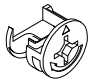
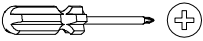


Phillips Head
Screwdriver

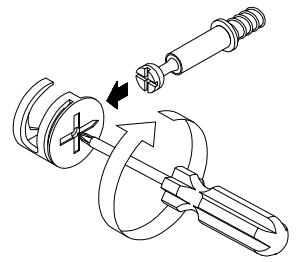


Secure 6 x Cam Bolts (H5) to Left Side Panel (P1) and 6 x Cam Bolts (H5) to Right Side Panel (P2) by tightening with the Phillips Head Screwdriver.

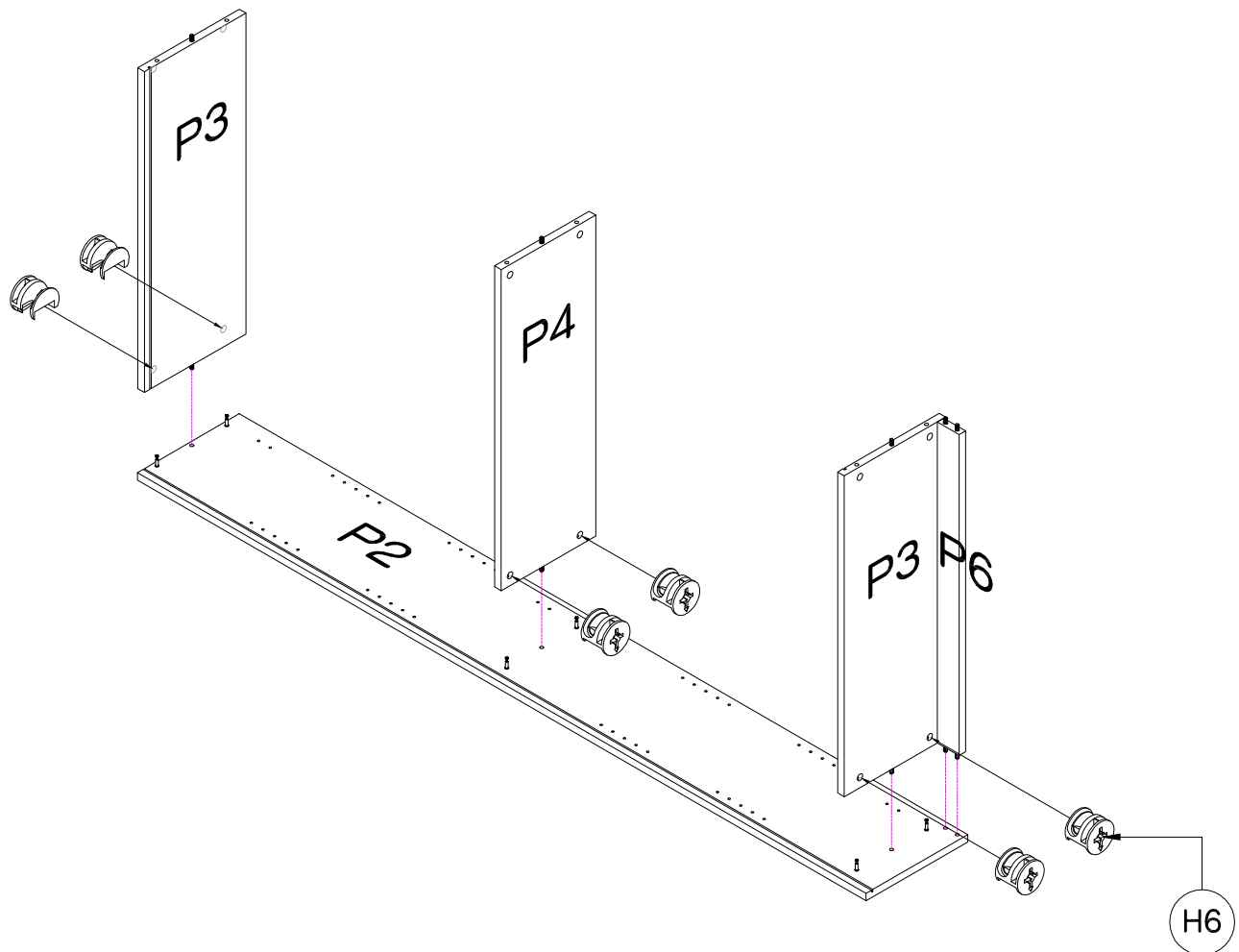
Step 3

You will need

6 × Cam Nuts (H6)

Phillips Head Screwdriver

This is how a cam nut works...



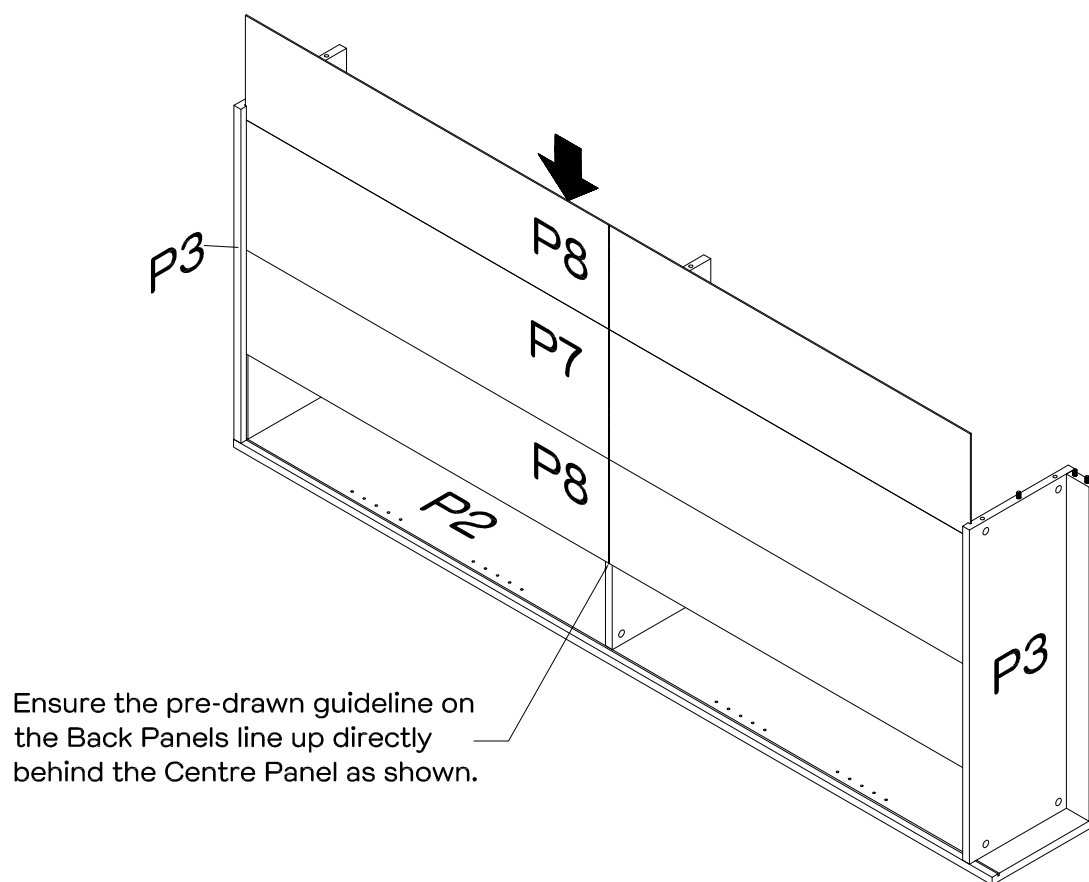
The head of the cam bolt goes into the open mouth of the cam nut. You then turn the cam nut so it tightens over the bolt.



Insert 4 × Cam Nuts (H6) into Top/Bottom Panels (P3x2) and 2 × Cam Nuts (H6) into Centre Panel (P4) as shown. Rotate the cam nuts so the arrows point towards the incoming cam bolts. Secure the Right Side Panel (P2) to Top/Bottom Panels (P3x2) and Centre Panel (P4) by tightening cam nuts with a Phillips Head Screwdriver. Insert Front Panel (P6) into Right Side Panel (P2) as shown.


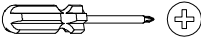
Step 4

Ensure laminated side of back panels are facing the inside of the bookcase.

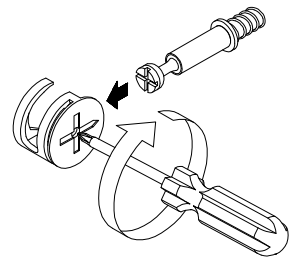


Slide Back Panels (P7&P8x2) into the grooves of Right Side Panel (P2) and Top/Bottom Panels (P3x2) as shown.

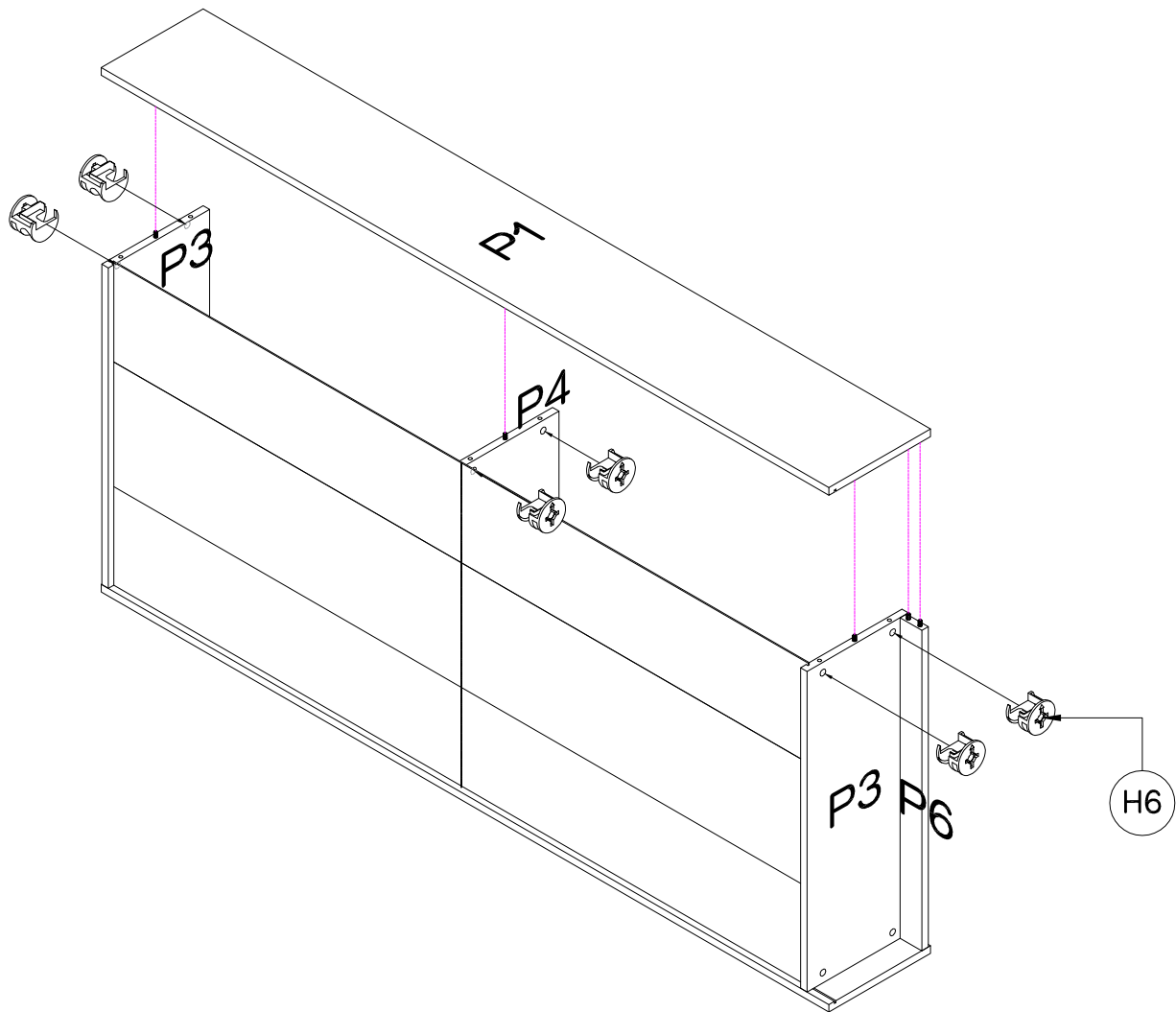
Step 5

You will need	
	
6 × Cam Nuts (H6)	
	
Phillips Head Screwdriver	

This is how a cam nut works...

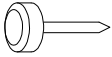

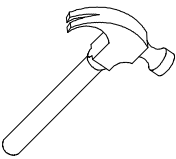


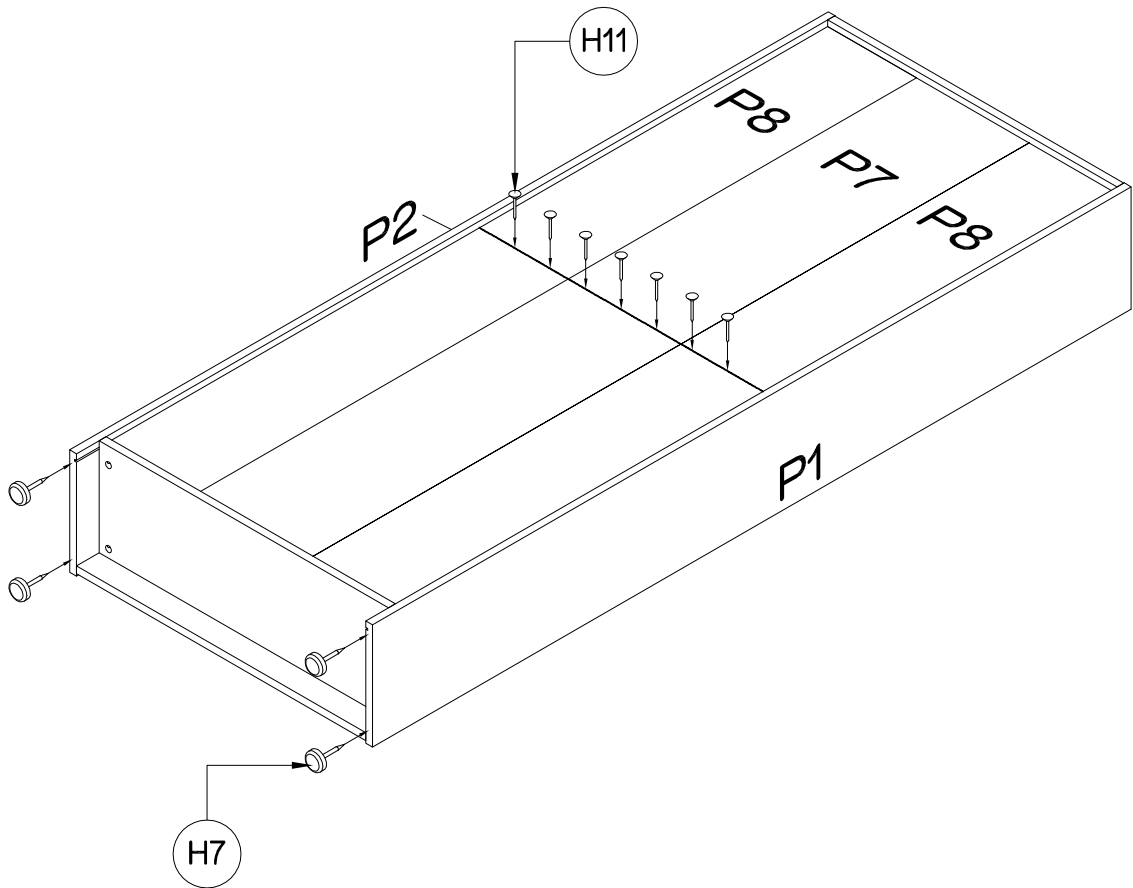
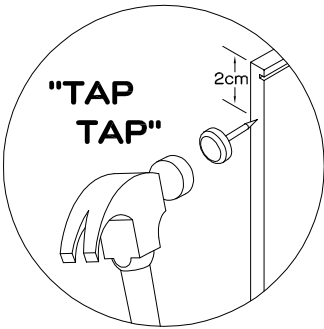
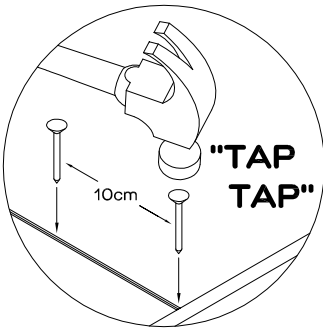
The head of the cam bolt goes into the open mouth of the cam nut. You then turn the cam nut so it tightens over the bolt.



Insert 4 × Cam Nuts (H6) into Top/Bottom Panels (P3x2) and 2 × Cam Nuts (H6) into Centre Panel (P4) as shown. Rotate the cam nuts so the arrows point towards the incoming cam bolts. Secure the Left Side Panel (P1) to Top/Bottom Panels (P3x2) and Centre Panel (P4) by tightening cam nuts with a Phillips Head Screwdriver.


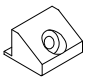
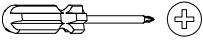
Step 6

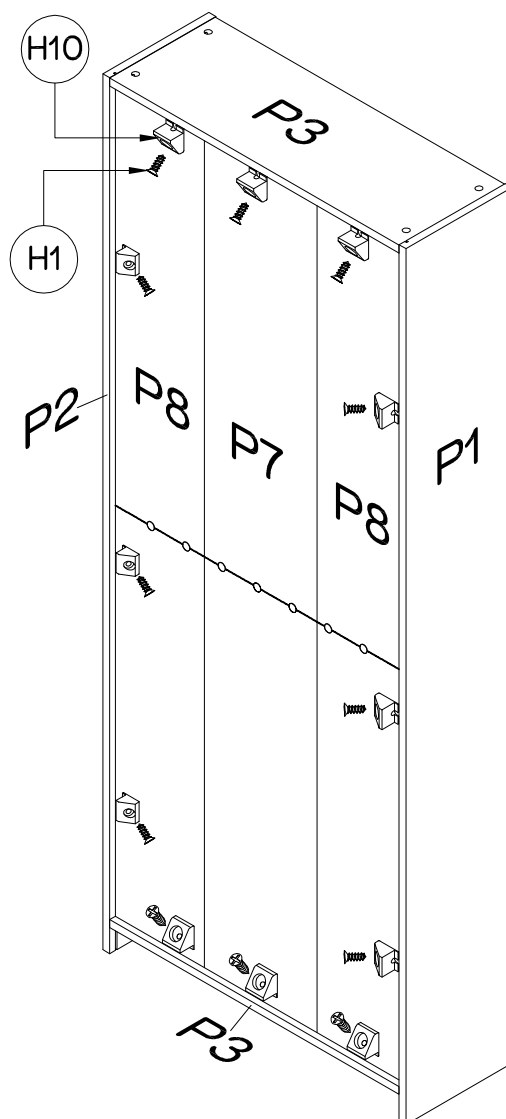
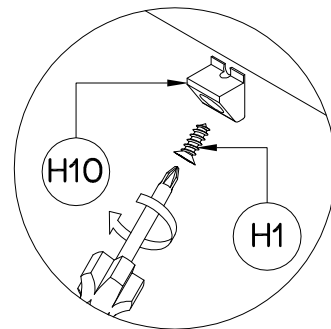
You will need	
	
4 × Feet Glides (H7)	7 × Nails (H11)
	
Hammer	



Secure Back Panels (P7&P8x2) to Centre Shelf Panel (P4) with 7 x Nails (H11) along the pre-drawn guideline with the Hammer. Ensure the Nails are evenly spaced along the guideline, approximately 10cm apart. Secure 4 x Feet Glides (H7) to the bottom of Left & Right Side Panels (P1&P2) with the Hammer. Ensure the Feet Glides are evenly spaced, approximately 2cm from the end of each panel.

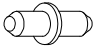
Step 7

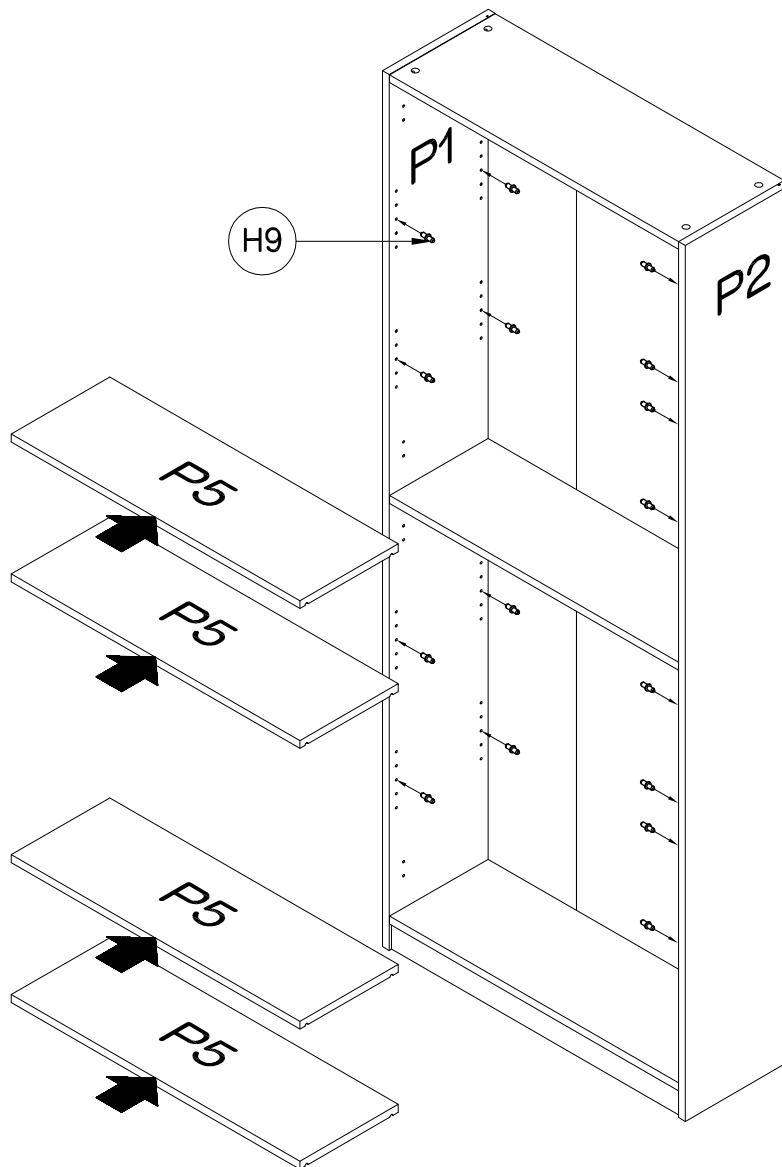
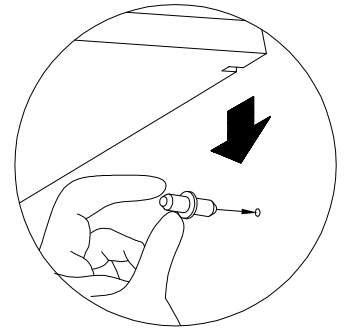
You will need	
	
12 x Wedge Screws (H1)	12 x Wedges (H10)
	
Phillips Head Screwdriver	



Insert 12 x Wedges (H10) into Top/Bottom Panels (P3x2) and Left & Right Side Panels (P1&P2) as shown and use 12 x Wedge Screws (H1) to secure by tightening with the Phillips Head Screwdriver.


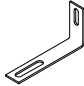


Step 8

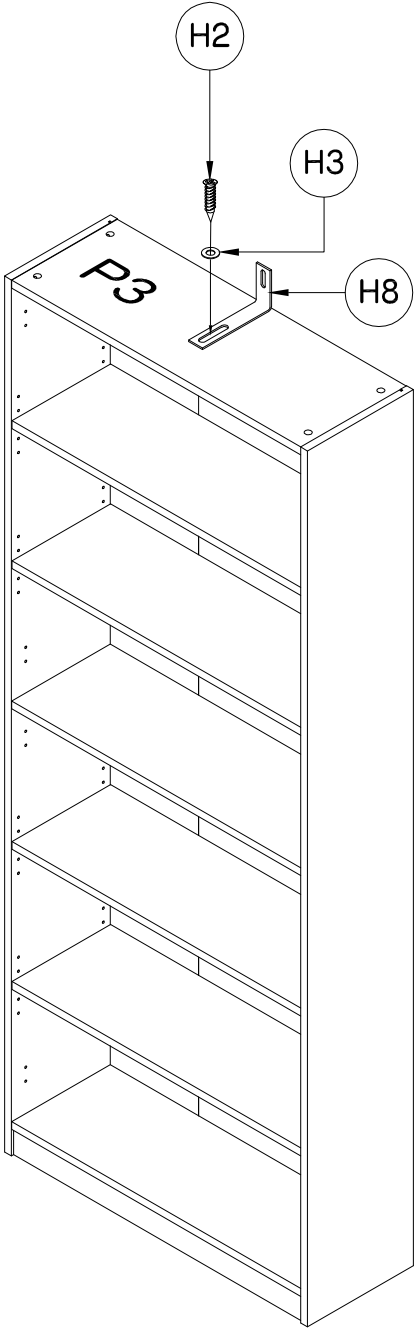
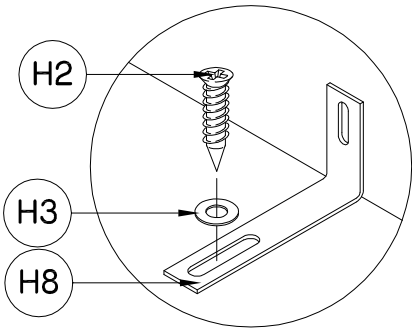
You will need

16 × Shelf Studs (H9)



Insert 16 × Shelf Studs (H9) into the Left & Right Side Panels (P1&P2) at your preferred height. Place the Shelf Panels (P5x4) into the unit by resting each shelf on the shelf studs. Ensure each shelf is positioned securely.

Step 9

You will need	
	
1 × Bracket Screw (H2)	1 × Wall Bracket (H8)
	
1 × Washer (H3)	Phillips Head Screwdriver



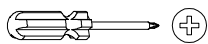
Use 1 x Bracket Screw (H2) and 1 x Washer (H3) to secure 1 x Wall Bracket (H8) to Top Panel (P3) as shown by tightening with the Phillips Head Screwdriver.

Step 10

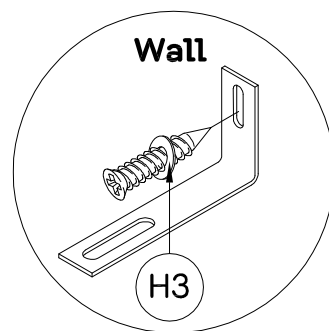
You will need



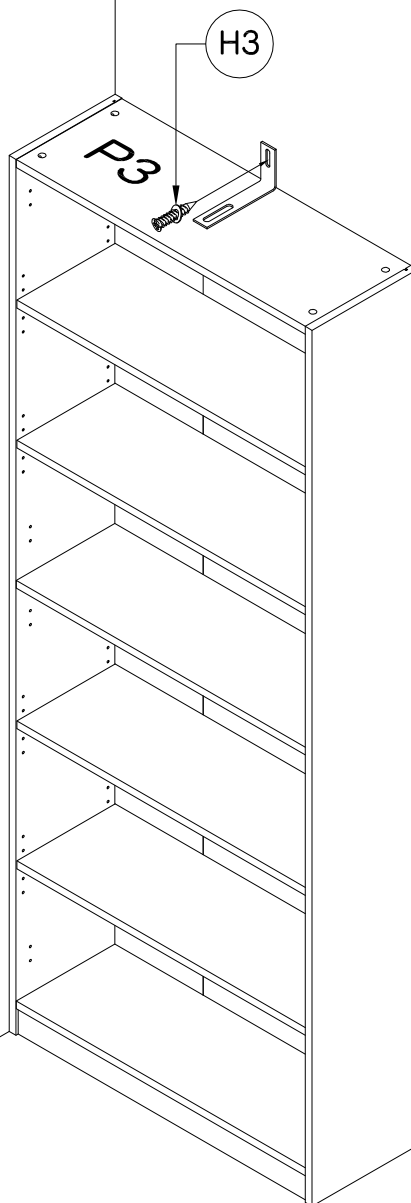
1 × Washer
(H3)



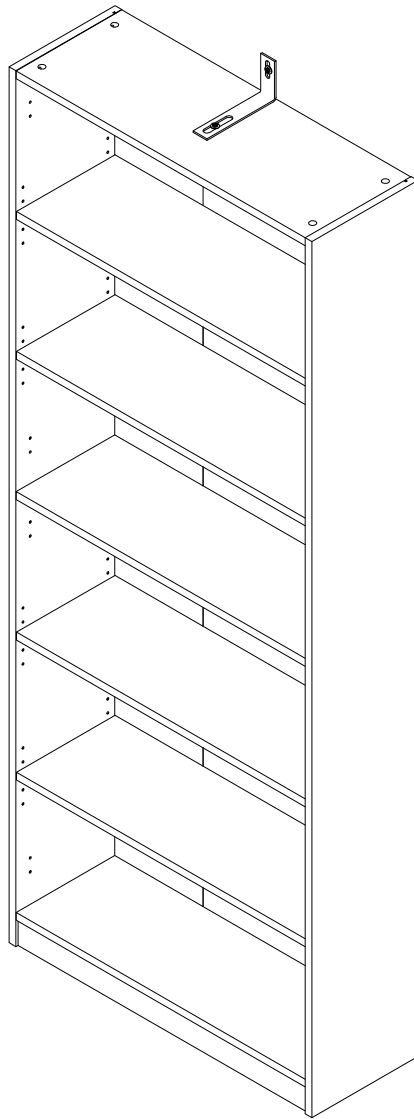
Phillips Head
Screwdriver



Screws and wall plugs
are not provided,
please use appropriate
fixtures for your wall.



We strongly suggest using the wall bracket provided to prevent this unit from toppling. Seek advice from a qualified tradesperson on how to attach this to your specific wall. Move furniture to its final position, make sure it is firmly attached and a snug fit.



Job Complete!

In the interest of our environment please dispose of all packaging thoughtfully.