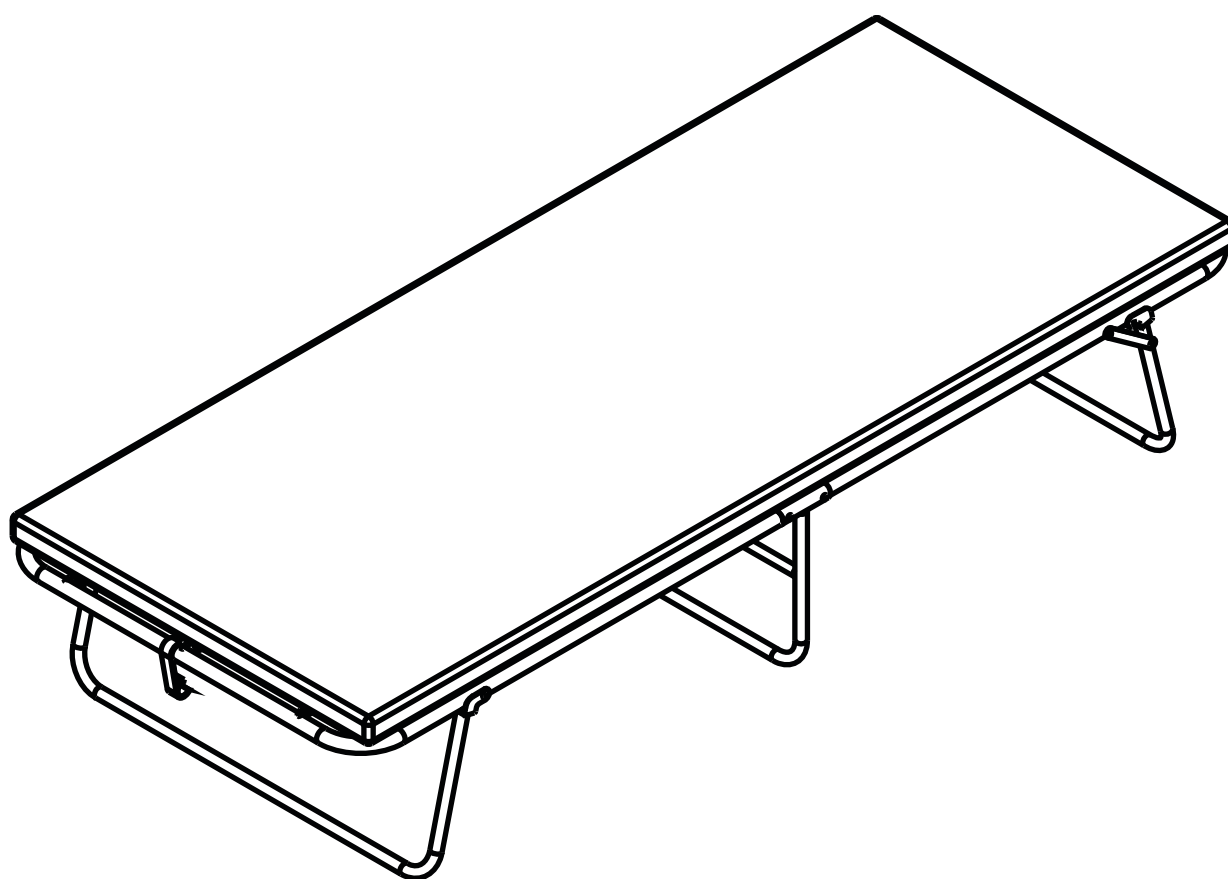


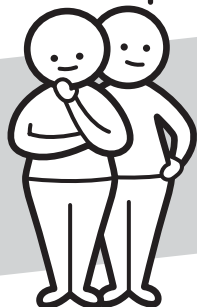


**Fantastic
Furniture**

Version 1.0



Two People



Required

Foldaway

Guest Bed Black

fantasticfurniture.com.au



CAUTION:

**ALWAYS ENSURE YOUR HANDS ARE CLEAR OF
THE HINGE MECHANISM WHEN IN USE TO AVOID INJURY.**

Children should only operate the mechanism under adult supervision. The mechanism should always be in the closed position when not in use.

Looks like you've found your Fantastic!

We're thrilled you've chosen Fantastic Furniture
to help create a home you'll love!



Fantastic Furniture

Love it? Share it!

Fantastic buy! Share how it looks at home on Instagram for
your chance to win a \$250 Fantastic Furniture Gift Card!
@fantasticfurniture

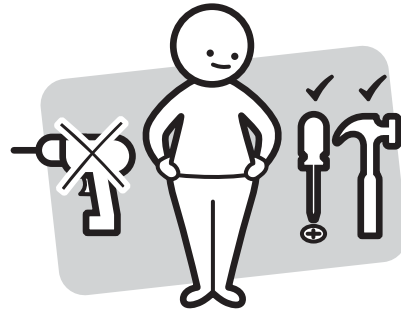


**Fantastic
Furniture**

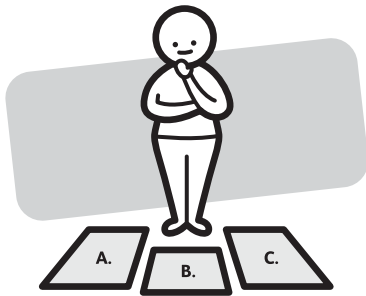
Assembly checklist



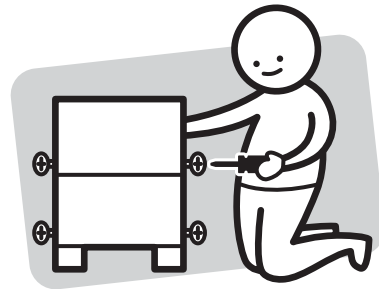
Read through the instructions carefully before you begin.



Make sure you have all the required tools. Never use power tools unless instructed.



Identify and lay out all of the components before you begin assembly.



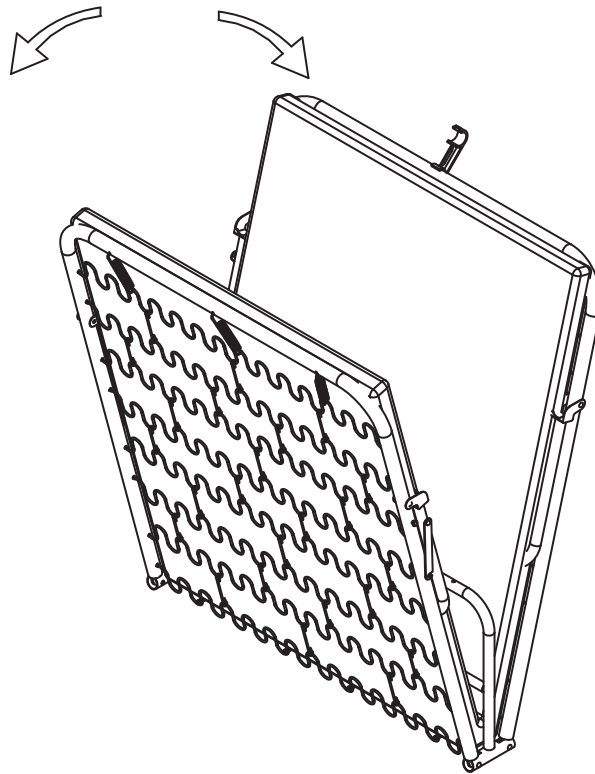
Unless instructed, do not fully tighten screws until the item is fully assembled.

Useful information

- ! Never use power tools unless specifically instructed. They can damage your components or hardware if used incorrectly.
- ! The most common mistakes made during assembly are using the wrong hardware or getting components back to front.
- ! Always use a soft surface (such as carpet or cardboard) when assembling your product to avoid scratching or damaging the surface of the product.
- ! Bulky items such as wardrobes and bunk beds should be assembled in the room they will be used in as they may not fit through a door once assembled.
- ! Never use any glue until you are certain that the parts belong together.
- ! Periodically check and re-tighten all fasteners. Check the product care label or website for product care instructions.
- ! If you are having any difficulties assembling your product, missing any hardware or components please visit our website Help Centre for further assistance.
- ! Please see page 2 for any safety requirements or weight restrictions.

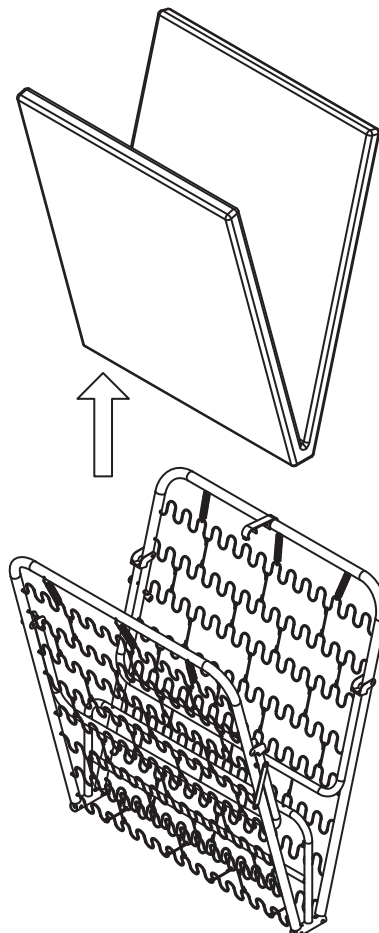
Step 1

To use bed, unhook latch and unfold the two sides.
As the sides open, the legs will unfold automatically.



Step 2

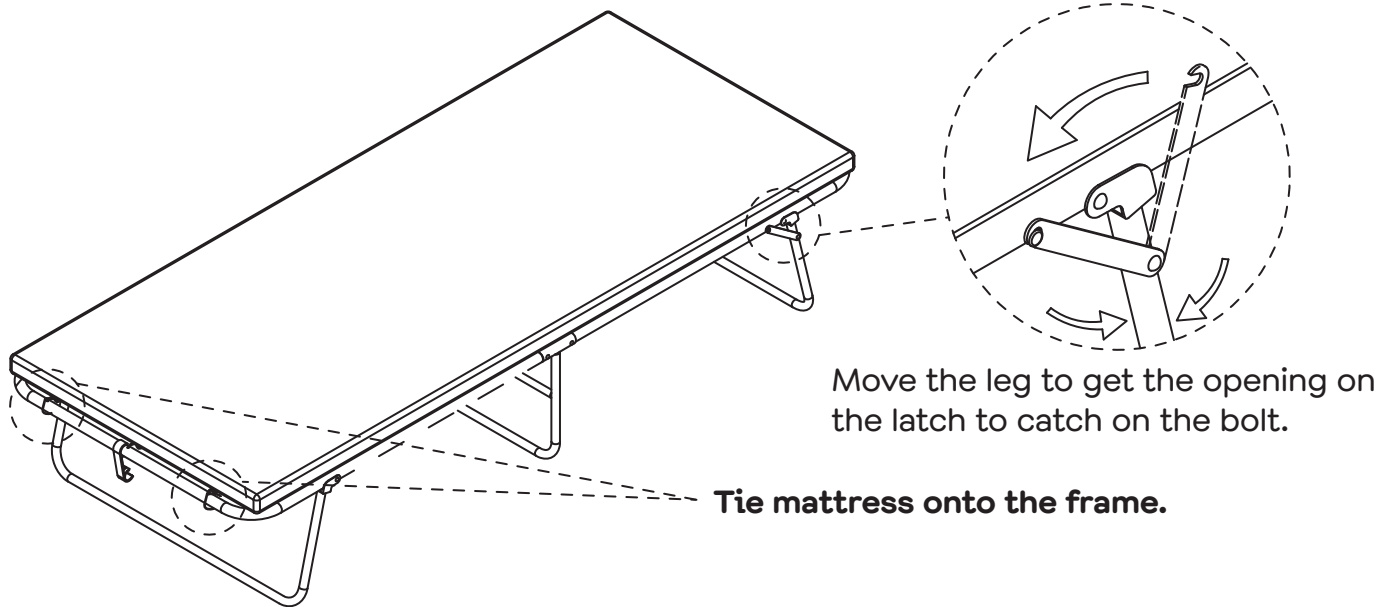
Slide the mattress out.



Step 3

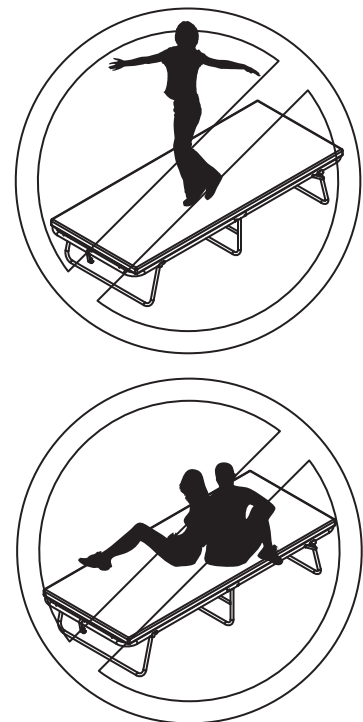
Stand the bed frame on its legs and lay the mattress on top.
Lower the latch into place to secure the legs.
DO NOT use until the latch is clipped in.

To fold bed, reverse the directions in steps 3, 2 & 1.



Step 4

This bed has been designed for one person to lie down on.
Maximum Weight Recommended: 100kg
Only one person should be on the bed at all times.
DO NOT stand or jump on the bed.



Job Complete!

In the interest of our environment please dispose
of all packaging thoughtfully.