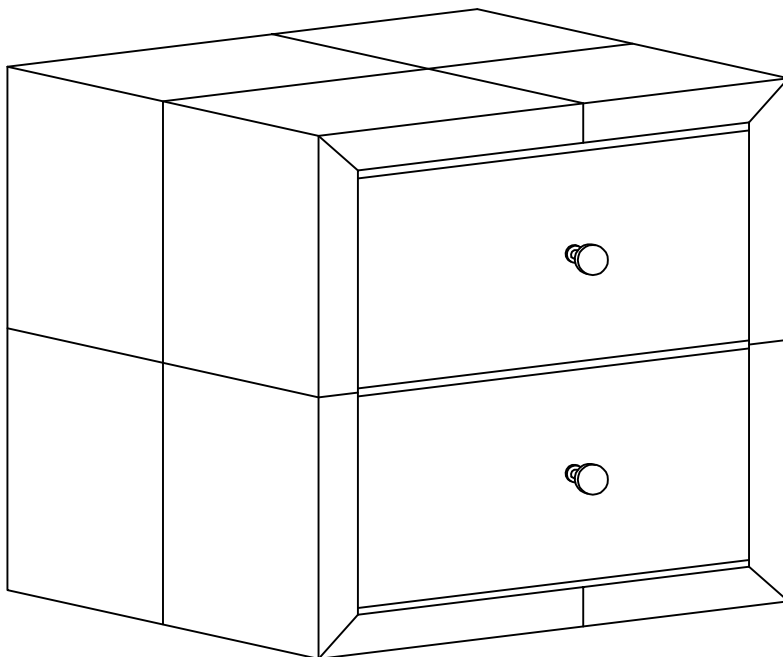




Version 1.1



BONDI

NIGHT STAND

www.fantasticfurniture.com.au



**WARNING: ENSURE THE WALL STRAP IS ATTACHED TO
AVOID SERIOUS INJURY.**

To avoid any serious or fatal injury, this product has been fitted with a wall strap to prevent toppling. We strongly recommend that this product is permanently fixed to the wall or other suitable surface. Fixing devices are not included since different surface materials require different attachments. Please seek professional advice if you are in doubt of what fixing device to use.

Enjoy

Your purchase From
Australia's Best Value Furniture Store



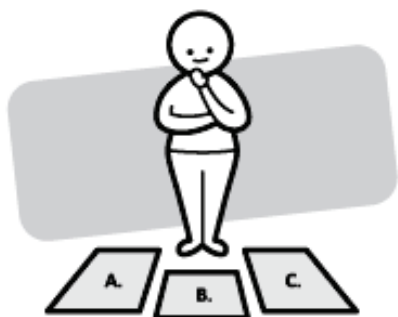
Assembly checklist



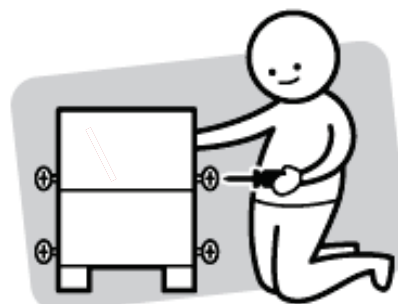
Read through the instructions carefully before you begin.



Make sure you have all the required tools. Never use power tools unless instructed.



Identify and lay out all of the components before you begin assembly.



Unless instructed, do not fully tighten screws until the item is fully assembled.

Useful Information

- ! Never use power tools unless specifically instructed. They can damage your components or hardware if used incorrectly.
- ! The most common mistakes made during assembly are using the wrong hardware or getting components back to front.
- ! Always use a soft surface (such as carpet or cardboard) when assembling your product to avoid scratching or damaging the surface of the product.
- ! Bulky items such as wardrobes and bunk beds should be assembled in the room they will be used in as they may not fit through a door once assembled.
- ! Never use any glue until you are certain that the parts belong together.
- ! Periodically check and re-tighten all fasteners. Check the product care label or website for product care instructions.
- ! If you are having any difficulties assembling your product, missing any hardware or components please visit our website Help Centre for further assistance.

What you need

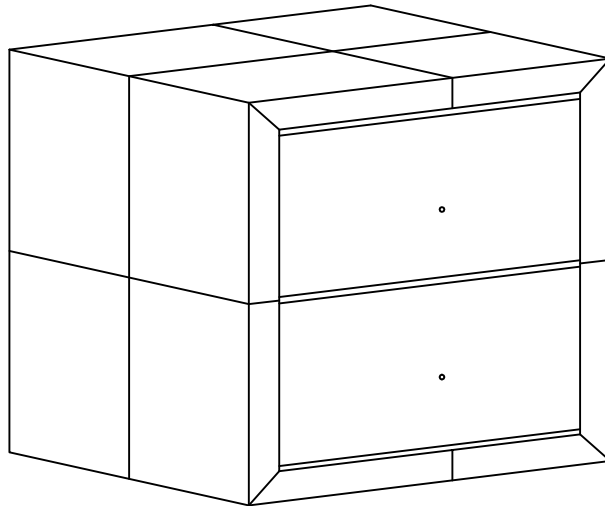
to assemble the product



DO NOT USE



Other tools you need
Phillips head screwdriver

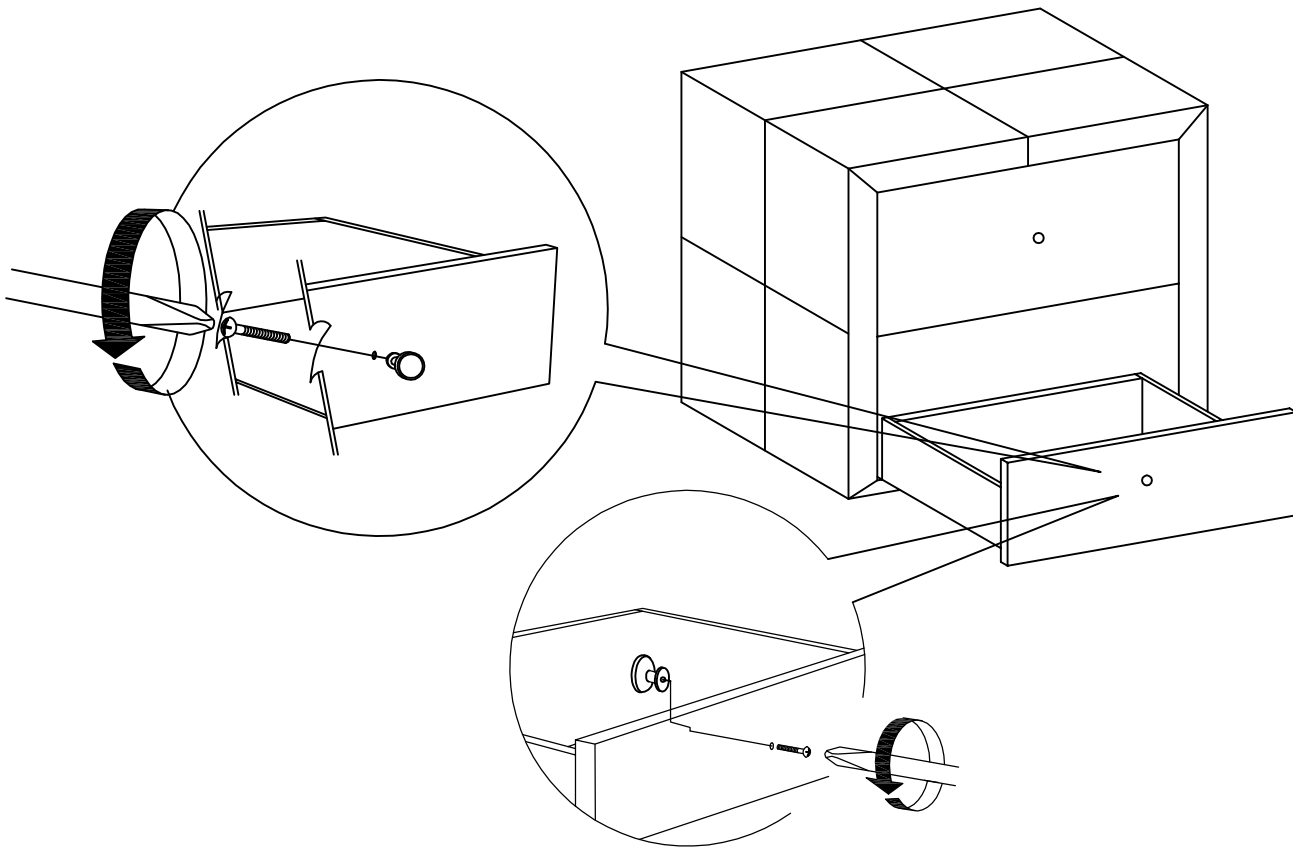


1 x Flat Washers
(H1)

Please make sure you have all these parts before you start

Step 1

Using a screwdriver ,swap the handle from the inside of the drawer to the outside of the unit.



You will need



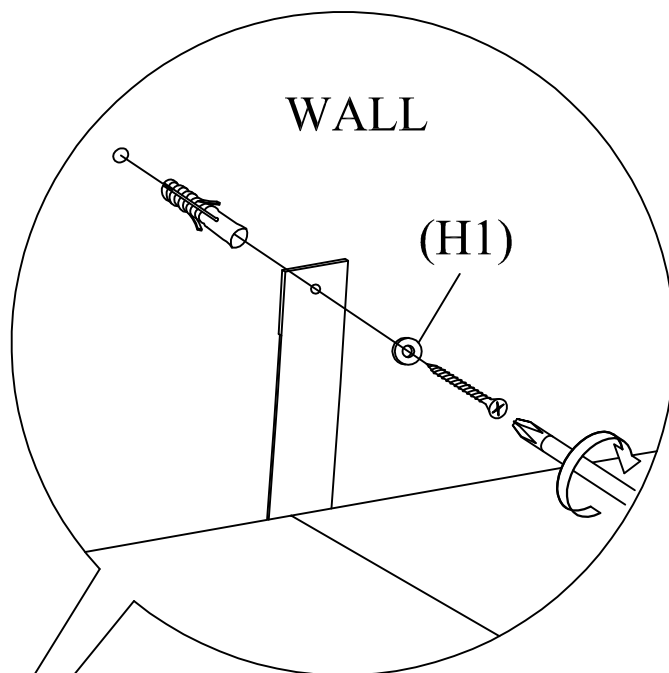
Phillips head screwdriver

Step 2

Seek advice from a qualified trades person on how to attach this safety strap to your specific wall .

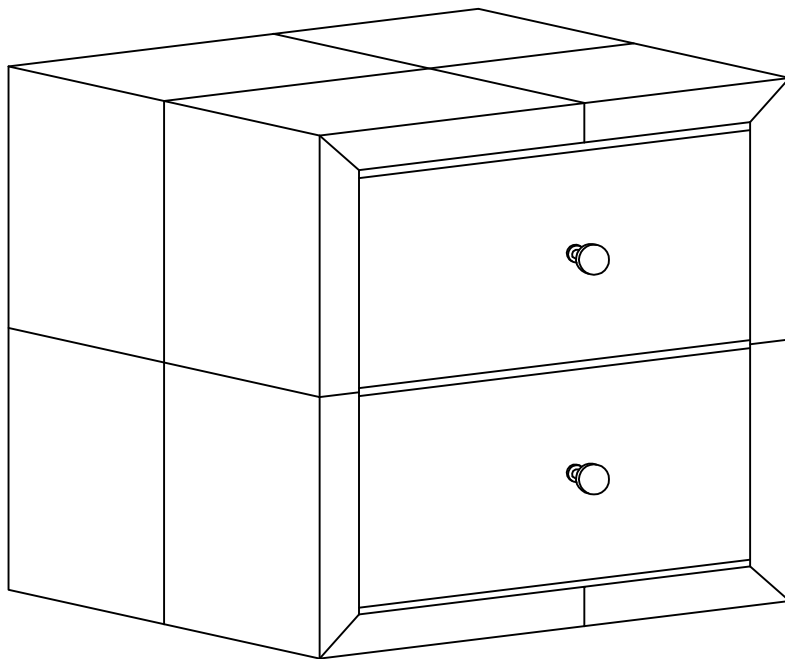
You will need	
	
1 x Flat Washers (H1)	Phillips head screwdriver

Screw and Wall Plug are not provided.
Please use appropriate fixtures for
your wall.



Move the Night Stand to the final position.
Attach the safety strap to the wall .Make
sure it is firmly attached and a snug fit.

Step 3



Job Complete

In the interest of our environment please dispose of all packaging thoughtfully.