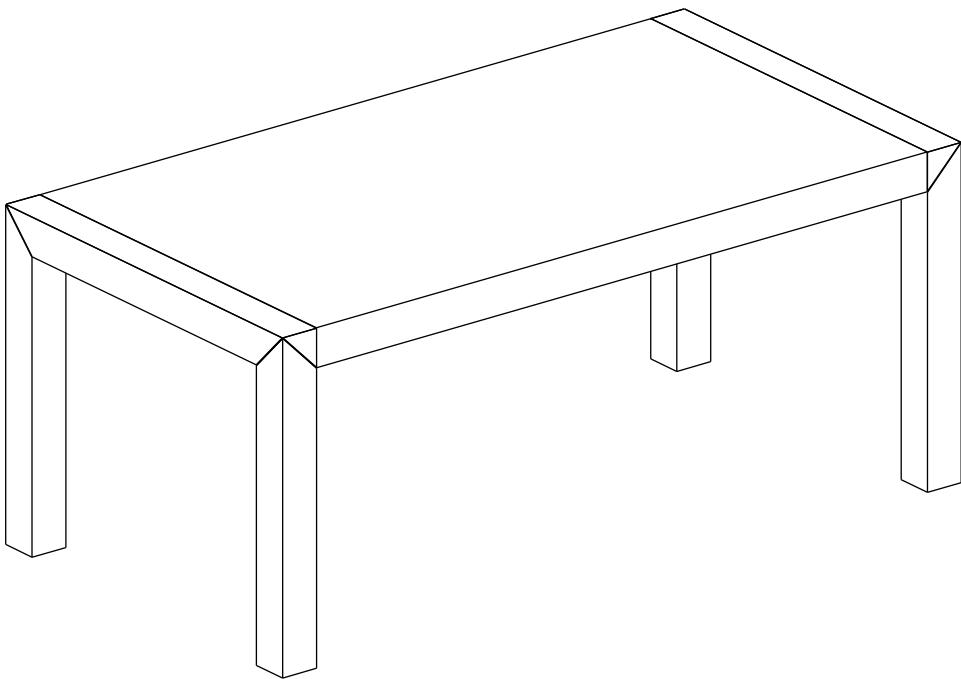




**Fantastic
Furniture**

Version 1.2



TWO PEOPLE



REQUIRED

Dalkeith

Table D8

fantasticfurniture.com.au

Looks like you've found your Fantastic!

We're thrilled you've chosen Fantastic Furniture
to help create a home you'll love



Fantastic Furniture

Love it? Share it!

Fantastic buy! Share how it looks at home on Instagram for
your chance to win a \$250 Fantastic Furniture Gift Card!
@fantasticfurniture

Assembly Checklist



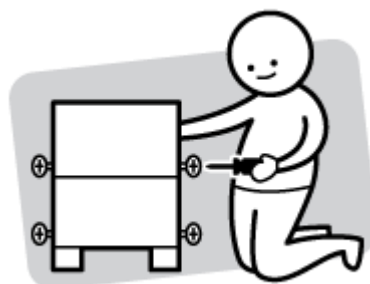
Read through the instruction carefully before you begin.



Make sure you have all the required tools. Never use power tools unless instructed.



Identify and lay out all of the components before you begin assembly.



Unless instructed, do not fully tighten screws until the item is full assembled.

Useful Information

! Never use power tools unless specifically instructed. They can damage your components or hardware if use incorrectly.

! The most common mistakes made during assembly are using the wrong hardware or getting components back to front.

! Always use a soft surface (such as carpet or cardboard) when assembling your products to avoid scratching or damaging the surface of product.

! Bulky items such as wardrobes and bunk beds should be assembled in the room they will be used in as they may not fit through a door once assembled.

! Never use any glue until you are certain that the parts belong together.

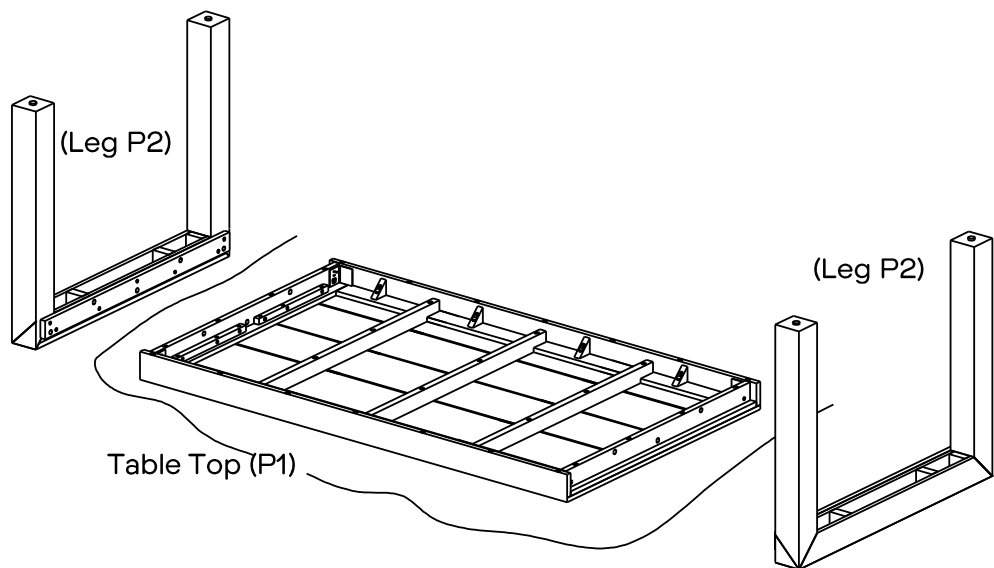
! Periodically check and re-tighten all fasteners. Check the product care label or website for product care instructions.

! If you are having any difficulties assembling your product, missing any hardware or components please visit our website Help Centre for further assistance.

! Please see page 2 for any safety requirements or weight restrictions.

What you need

to assemble the product



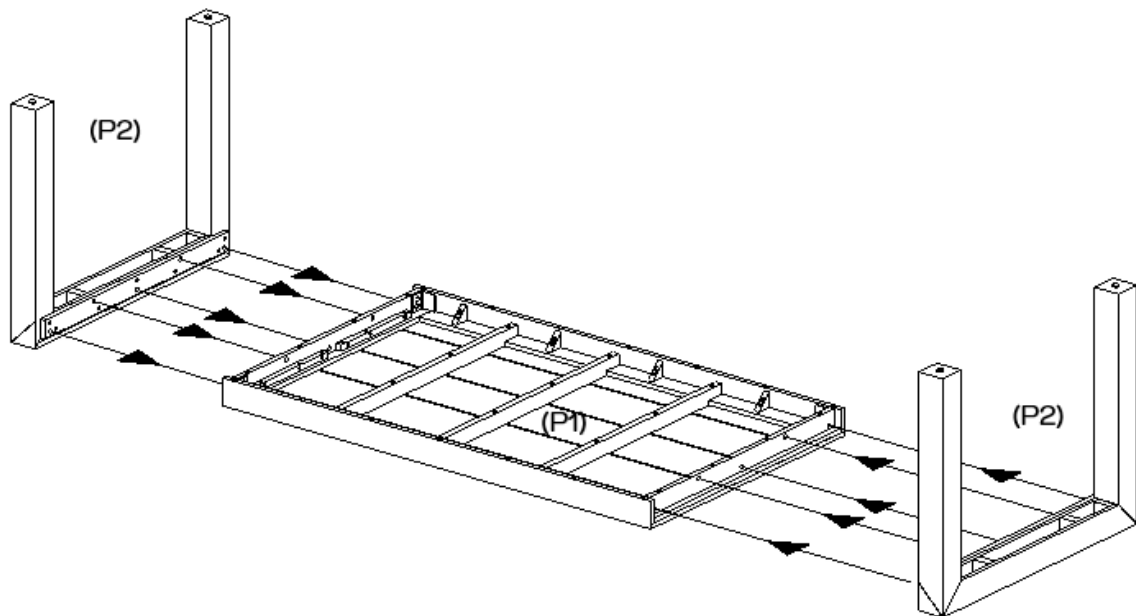
- Parts list**
Carton 1: 2 x Legs (P2).
Carton 2: Table Top (P1).

Hardware Pack

1 x Spanner (H1)	10 x Bolts (H2)	10 x Flat Washers (H3)	10 x Spring Washers (H4)

Step 1

Note: Assemble the table on a soft flat surface to prevent the table top from being damaged during assembly.







TWO PEOPLE

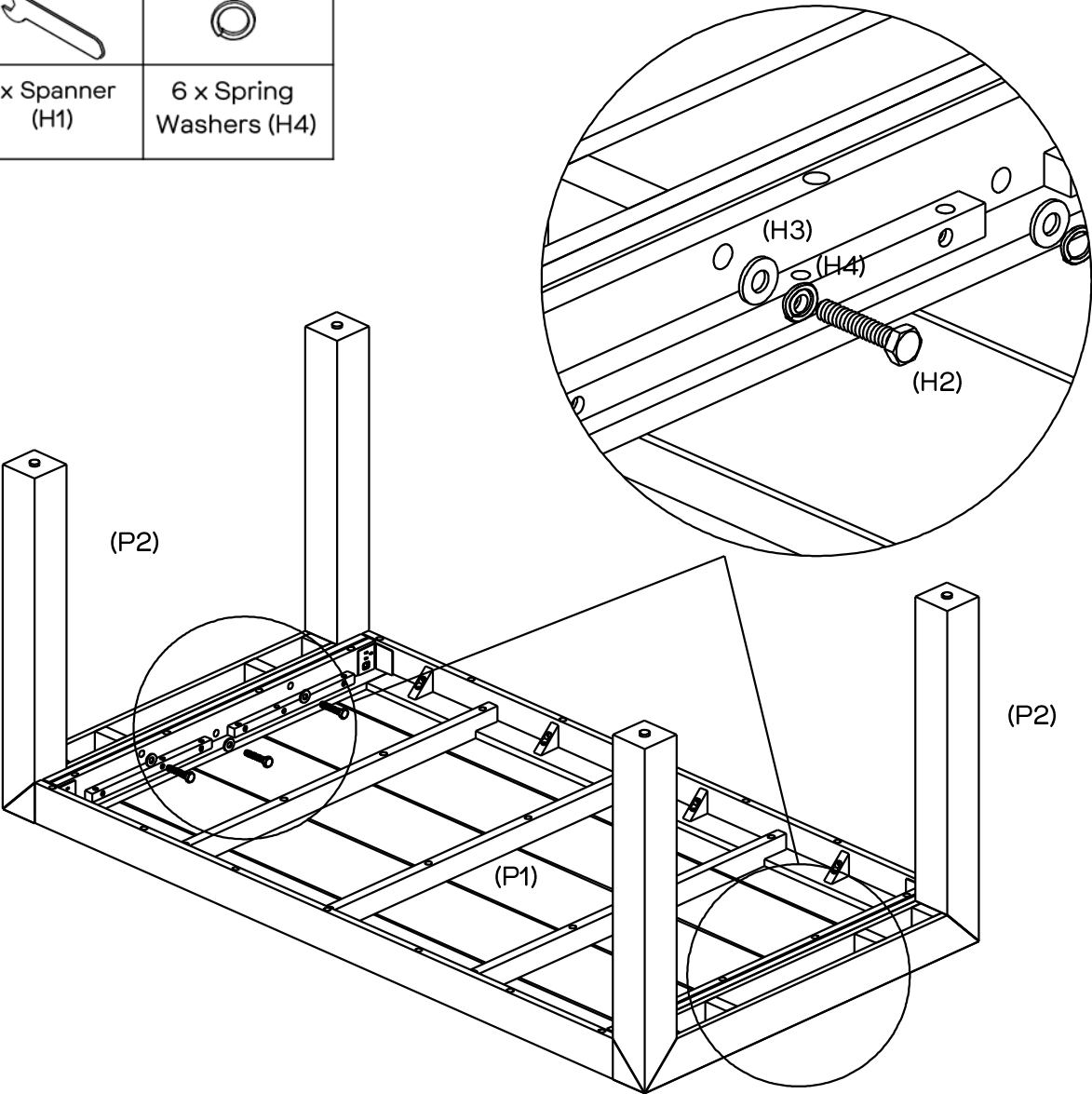


REQUIRED

With assistance, align 2 x legs (P2) to the table top (P1) ensuring the holes on the legs (P2) and the table top (P1) align.





Step 2

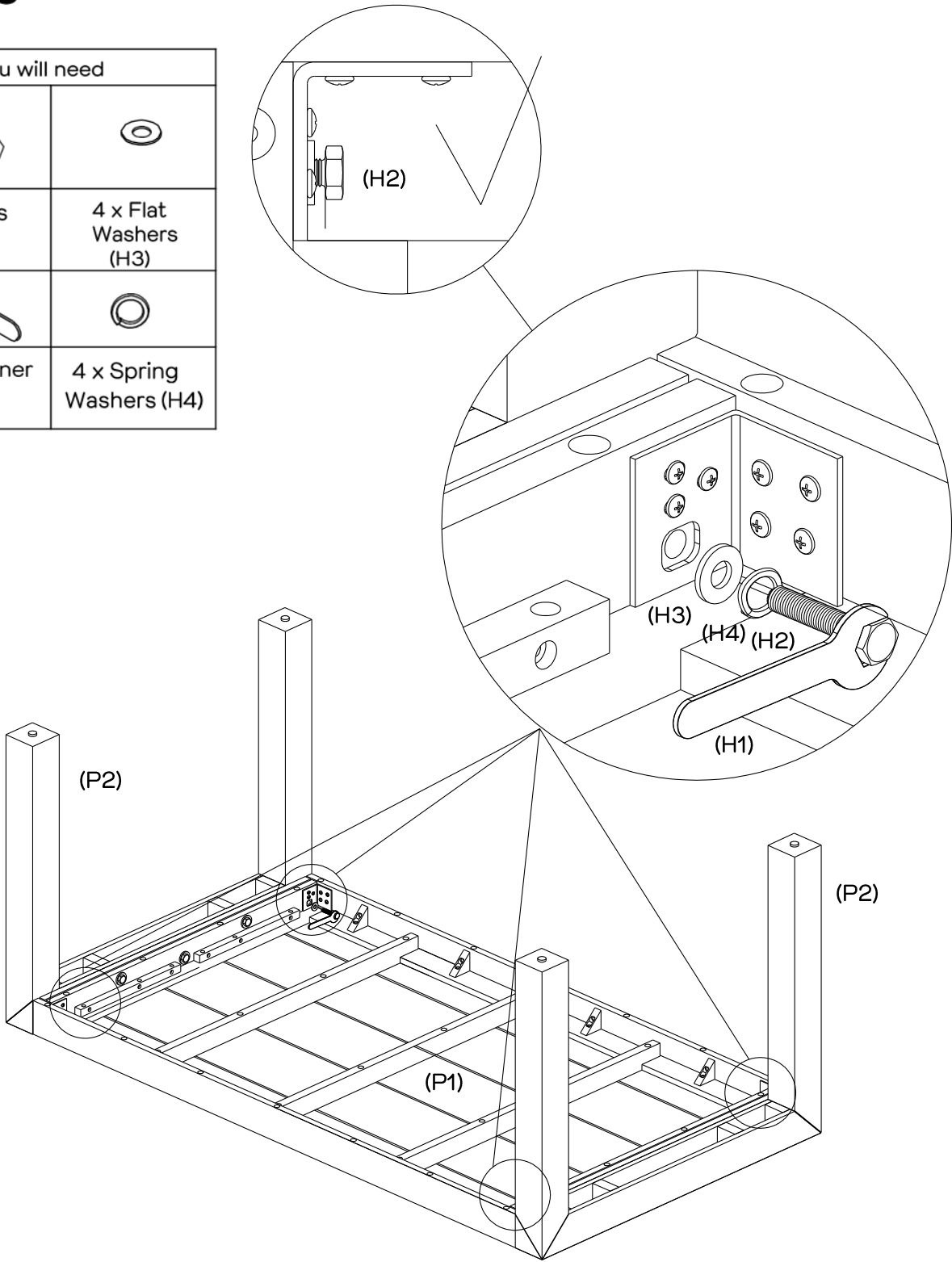
You will need	
	
6 x Bolts (H2)	6 x Flat Washers (H3)
	
1 x Spanner (H1)	6 x Spring Washers (H4)



Loosely attach 2 x legs (P2) to table top (P1) with 6 x bolts (H2), 6 x spring washers (H4) and 6 x flat washers (H3) using spanner (H1).


Step 3

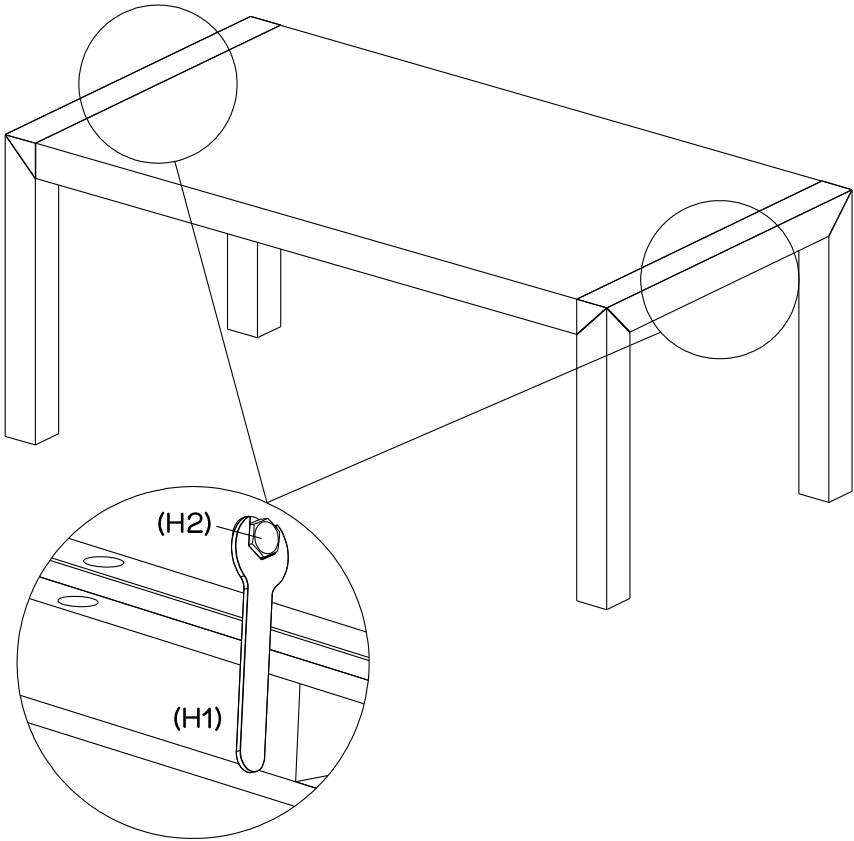
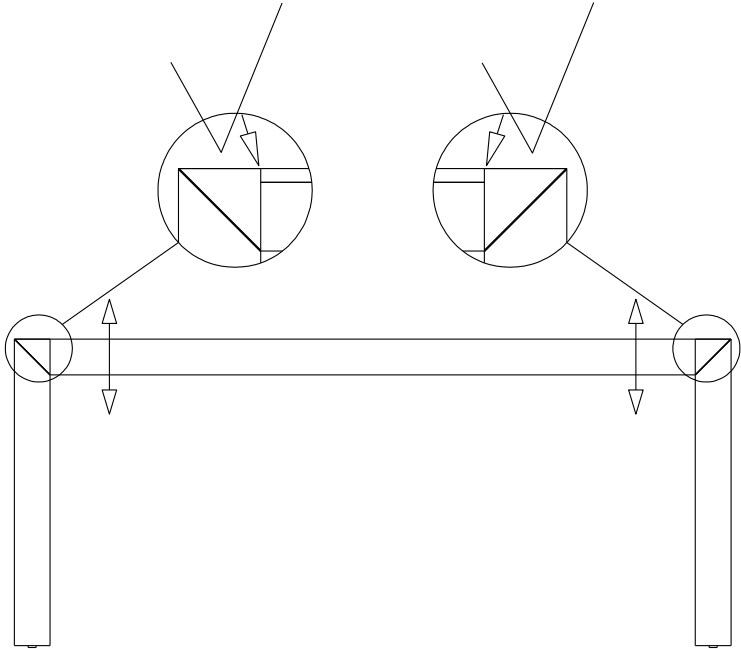
You will need	
	
4 x Bolts (H2)	4 x Flat Washers (H3)
	
1 x Spanner (H1)	4 x Spring Washers (H4)



Loosely attach 4 x bolts (H2), 4 x spring washers (H4) and 4 x flat washers (H3) into corner brackets using spanner (H1), do not fully tighten the bolts until Step 5.


Step 4

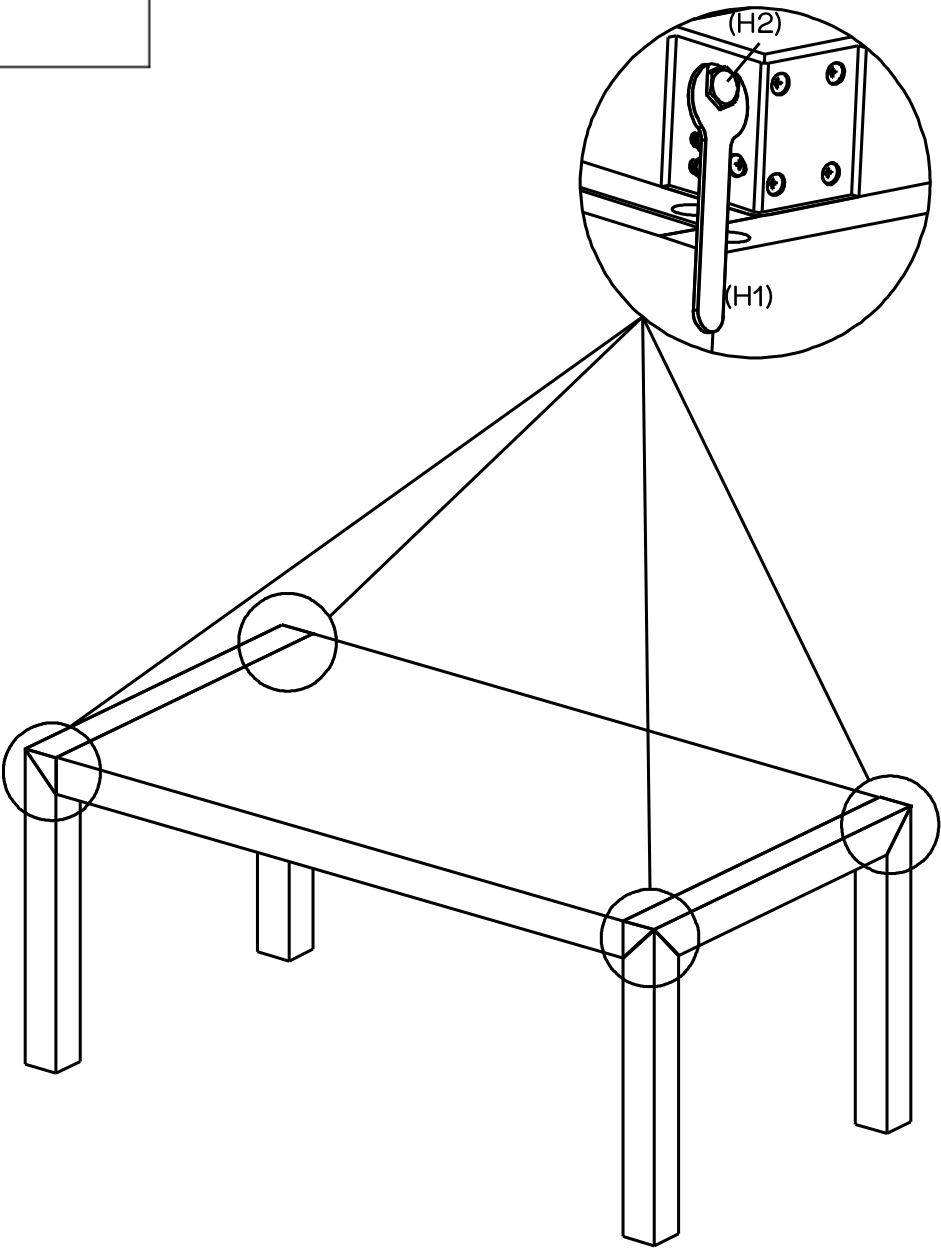
You will need	
	
1 x Spanner (H1)	



With assistance, turn the table upright.
Adjust the table top (P1) until both legs (P2) and table top (P1) are level.
Holding the table top (P1) in place, tighten 6 x bolts (H2) along the side of the table top (P1) using spanner (H1).

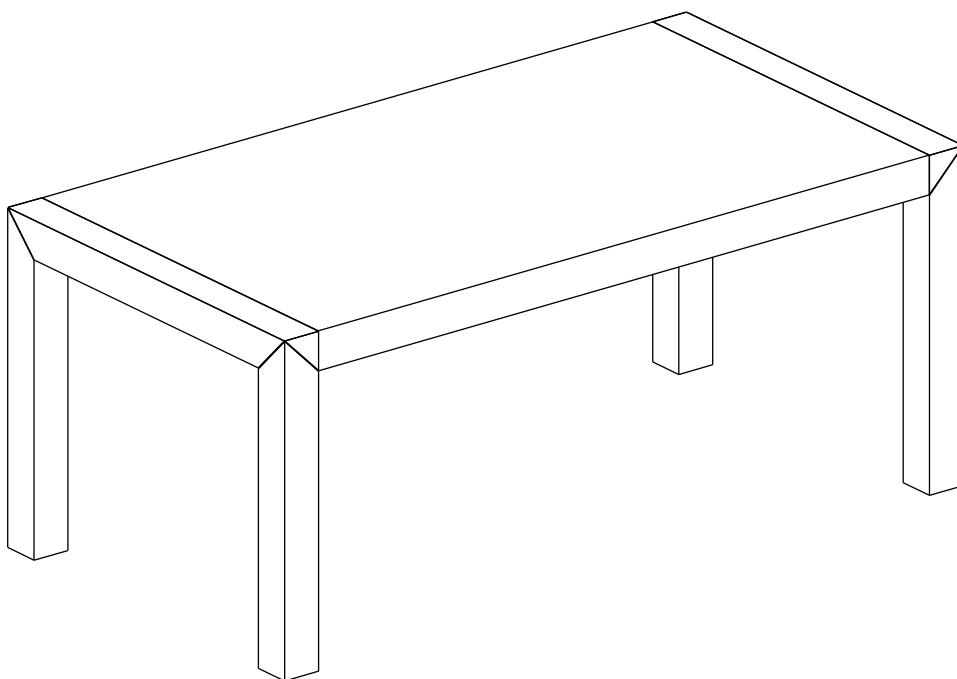
Step 5

You will need	
	
1 x Spanner (H1)	



Tighten the bolts (H2) on the corner brackets using spanner (H1).

Step 6



Job Complete!

In the interest of our environment please dispose
of all packaging thoughtfully.