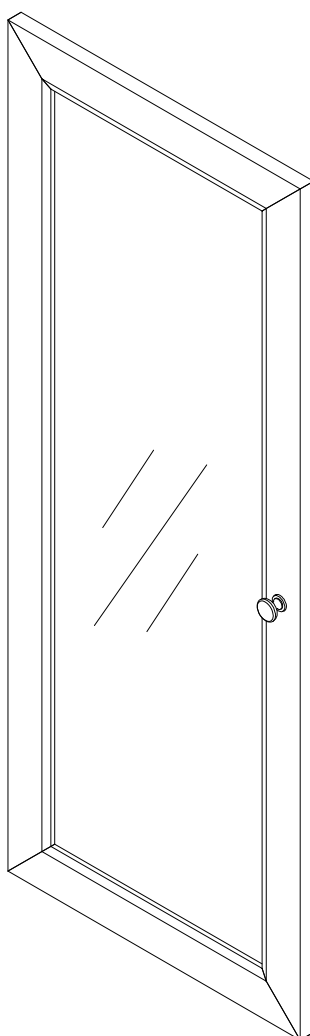


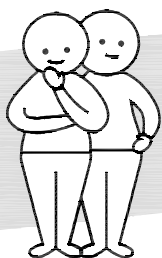


**Fantastic  
Furniture**

Version 1.0



**Two People**



**Required**

# **Kobi**

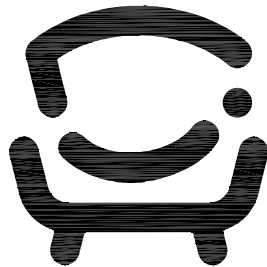
## **Bookcase Small Narrow Glass Door**

[www.fantasticfurniture.com.au](http://www.fantasticfurniture.com.au)

CAP145F0605J00-01

# Looks like you've found your Fantastic!

We're thrilled you've chosen Fantastic Furniture  
to help create a home you'll love



## Fantastic Furniture

### Love it? Share it!

Fantastic buy! Share how it looks at home for your  
chance to win a \$250 Fantastic Furniture Gift Card!  
**@fantasticfurniture**



#### **Warning : Ensure the wall strap is attached to avoid serious injury.**

To avoid any serious or fatal injury, this product has been fitted with a wall strap to prevent toppling. We strongly recommend that this product is permanently fixed to the wall or other suitable surface. Fixing devices are not included since different surface materials require different attachments. Please seek professional advice if you are in doubt of what fixing device to use.

#### **Glass should always be handled with care**

Scratches, chips, sudden changes in temperature and hairline fractures may cause the glass to break. This glass is designed to break into small, relatively harmless pieces and not sharp fragments..

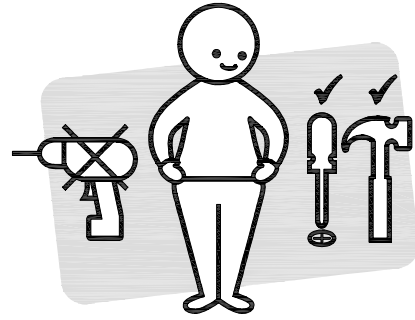
Avoid placing hot or cold items directly onto the table unless using a thick insulation material such as placemats or coasters.

Avoid dropping objects onto the glass. Do not allow hard or pitted objects to come into contact with the glass. Never use the top area as a chopping surface. Do not sit or stand on the glass surface.

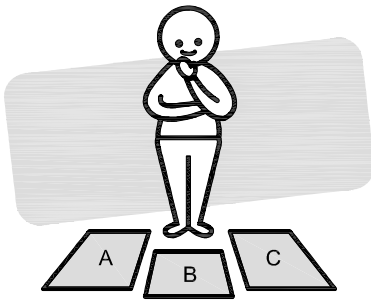
# Assembly Checklist



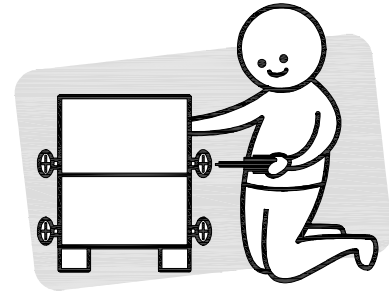
Read through the instructions carefully before you begin.



Make sure you have all the required tools. Never use power tools unless instructed.



Identify and lay out all of the components before you begin assembly.



Unless instructed, do not fully tighten screws until the item is fully assembled.

## Useful Information

- ! Never use power tools unless specifically instructed. They can damage your components or hardware if used incorrectly.
- ! The most common mistakes made during assembly are using the wrong hardware or getting components back to front.
- ! Always use a soft surface (such as carpet or cardboard) when assembling your product to avoid scratching or damaging the surface of the product.
- ! Bulky items such as wardrobes and bunk beds should be assembled in the room they will be used in as they may not fit through a door once assembled.
- ! Never use any glue until you are certain that the parts belong together.
- ! Periodically check and re-tighten all fasteners. Check the product care label or website for product care instructions.
- ! If you are having any difficulties assembling your product, missing any hardware or components please visit our website Help Centre for further assistance.
- ! Please see page 2 for any safety requirements or weight restrictions.

# What You Need

to assemble the product



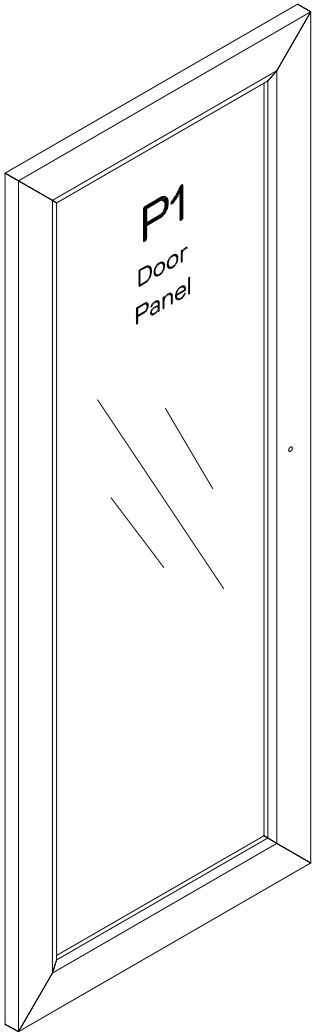
DO NOT USE



**Other Tools You Need**  
Phillips head screwdriver

**Parts List**

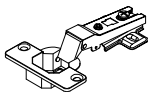
**Box 1:** Door Panel (P1) x 1



4 × Hinge  
Screws  
(H1)



4 × Hinge  
Plate Screws  
(H2)



2 × Hinges  
(H3)

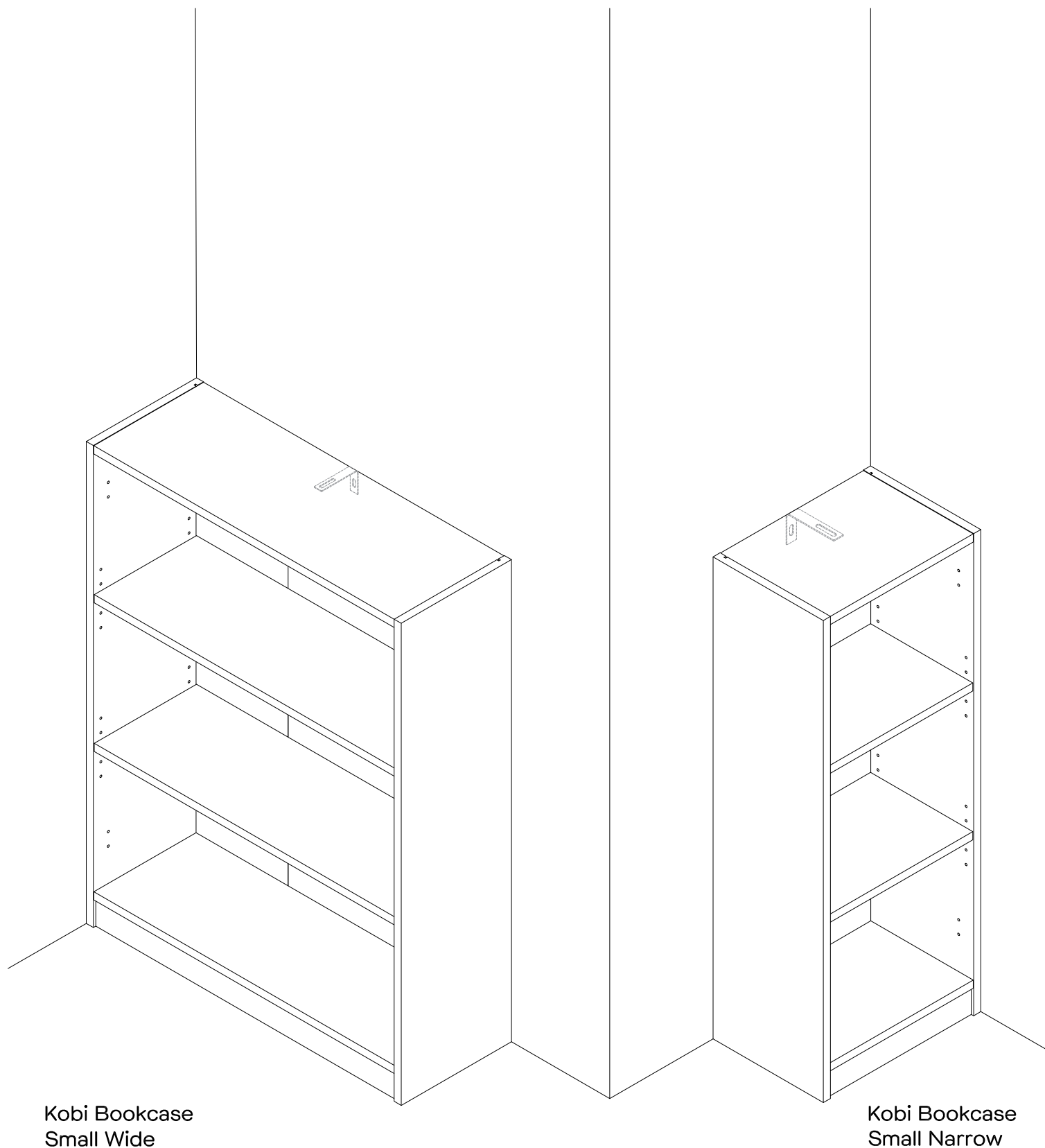


2 × Soft Close  
Pads  
(H4)




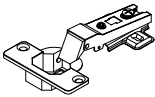

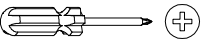
1 × Handle  
+ Screw Set  
(H5)

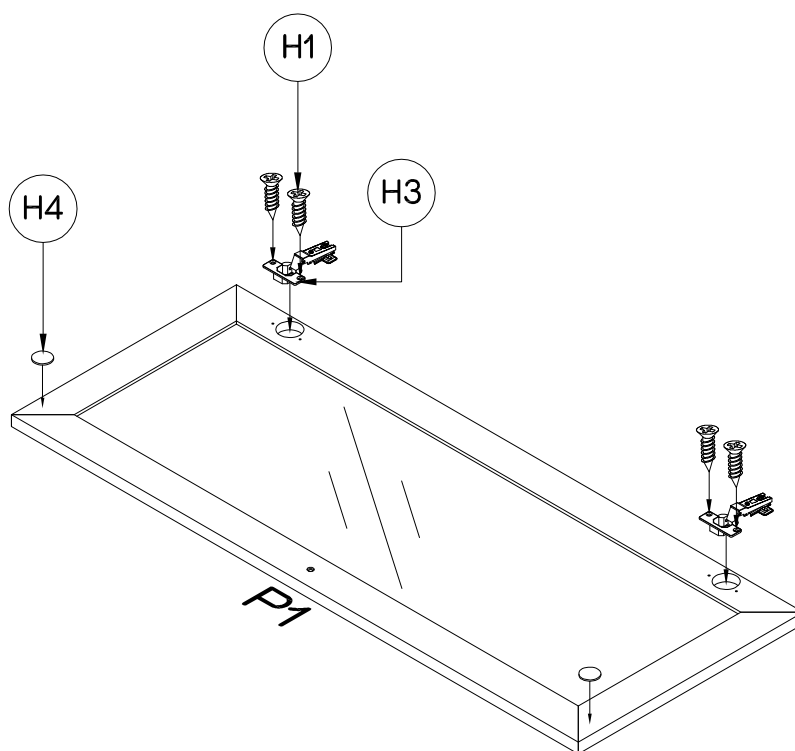
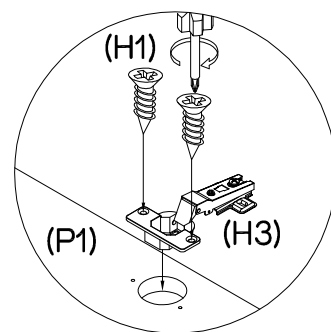
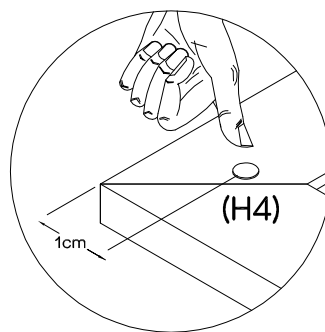
# Step 1



Ensure that your Kobi Bookcase is secured to the wall with the Wall Bracket provided.

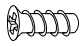

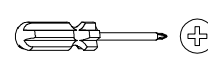
# Step 2

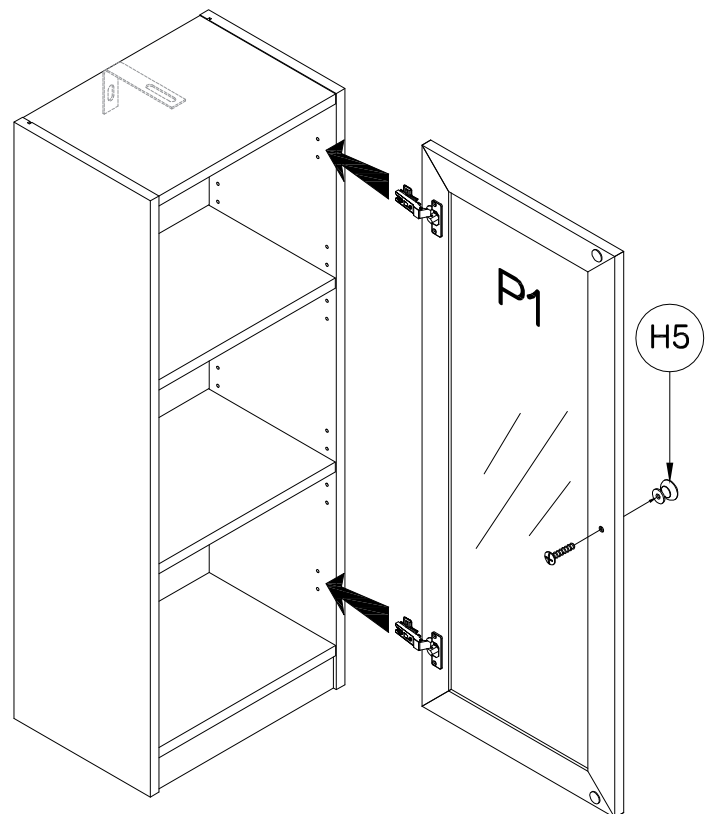
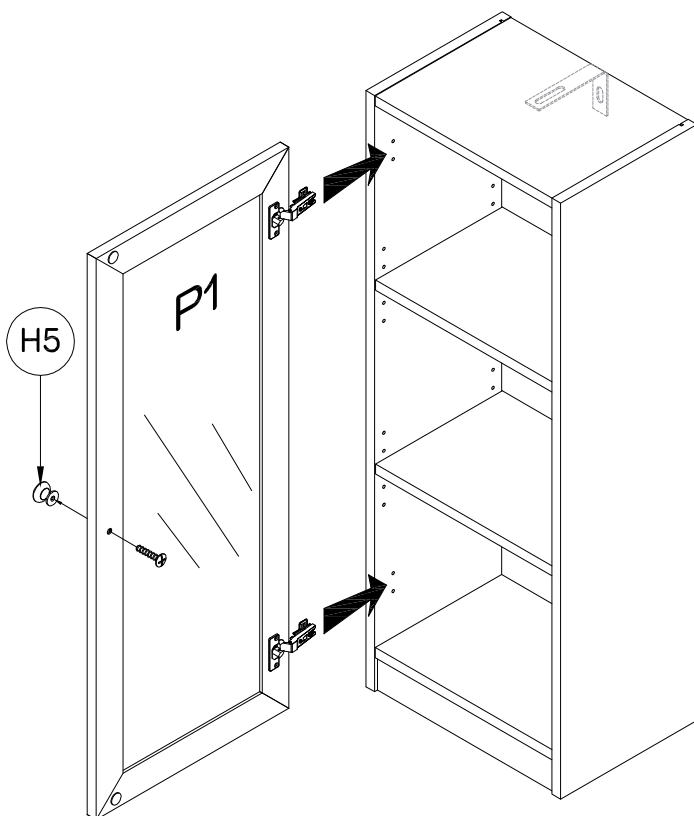
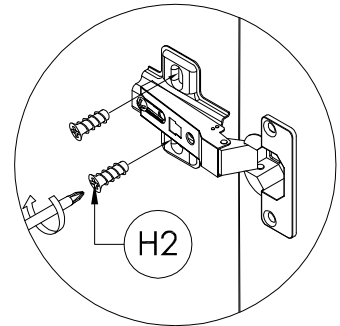
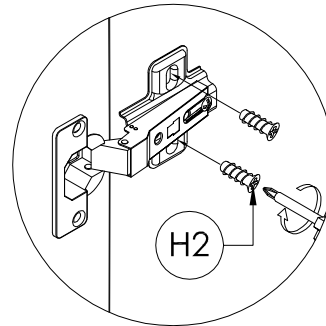
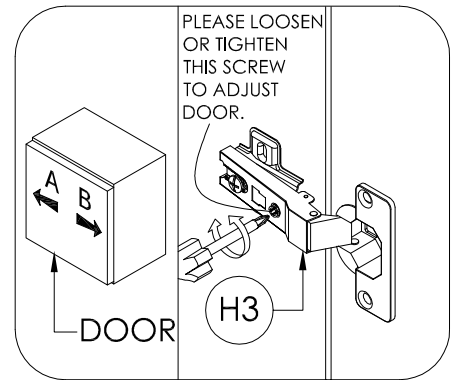
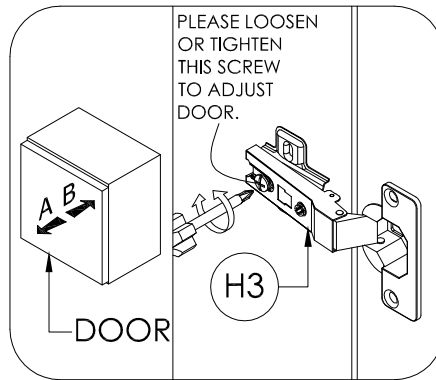
You will need	
	
4 × Hinge Screws (H1)	2 × Hinges (H3)
	
2 × Soft Close Pads (H4)	Phillips Head Screwdriver



Secure 4 × Hinges (H3) to Door Panel (P1) with 8 × Hinge Screws (H1) by tightening with the Phillips Head Screwdriver.  
Attach 2 × Soft Close Pads (H4) to the corners of Door Panel (P1) as shown.

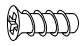

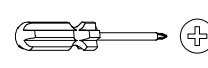
# Step 3 - Kobi Bookcase Small Narrow

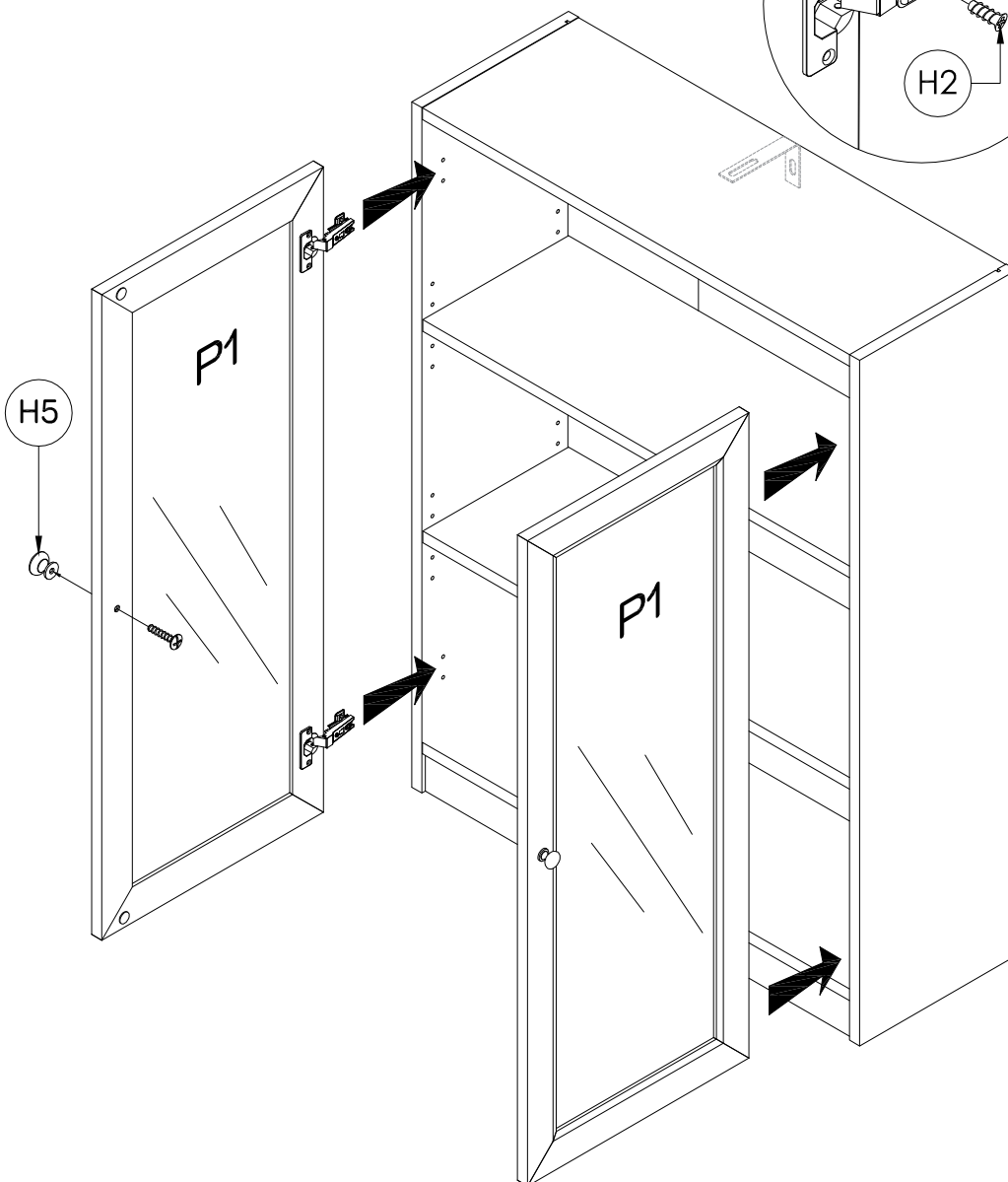
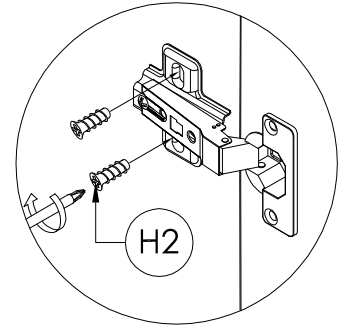
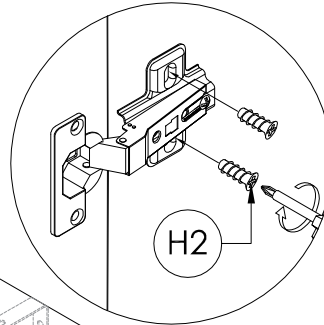
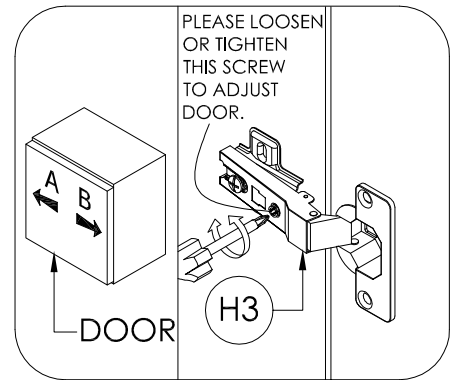
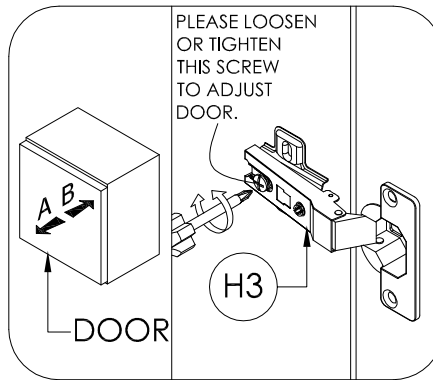
You will need	
	
4 × Hinge Plate Screws (H2)	1 × Handle + Screw Set (H5)
	
Phillips Head Screwdriver	



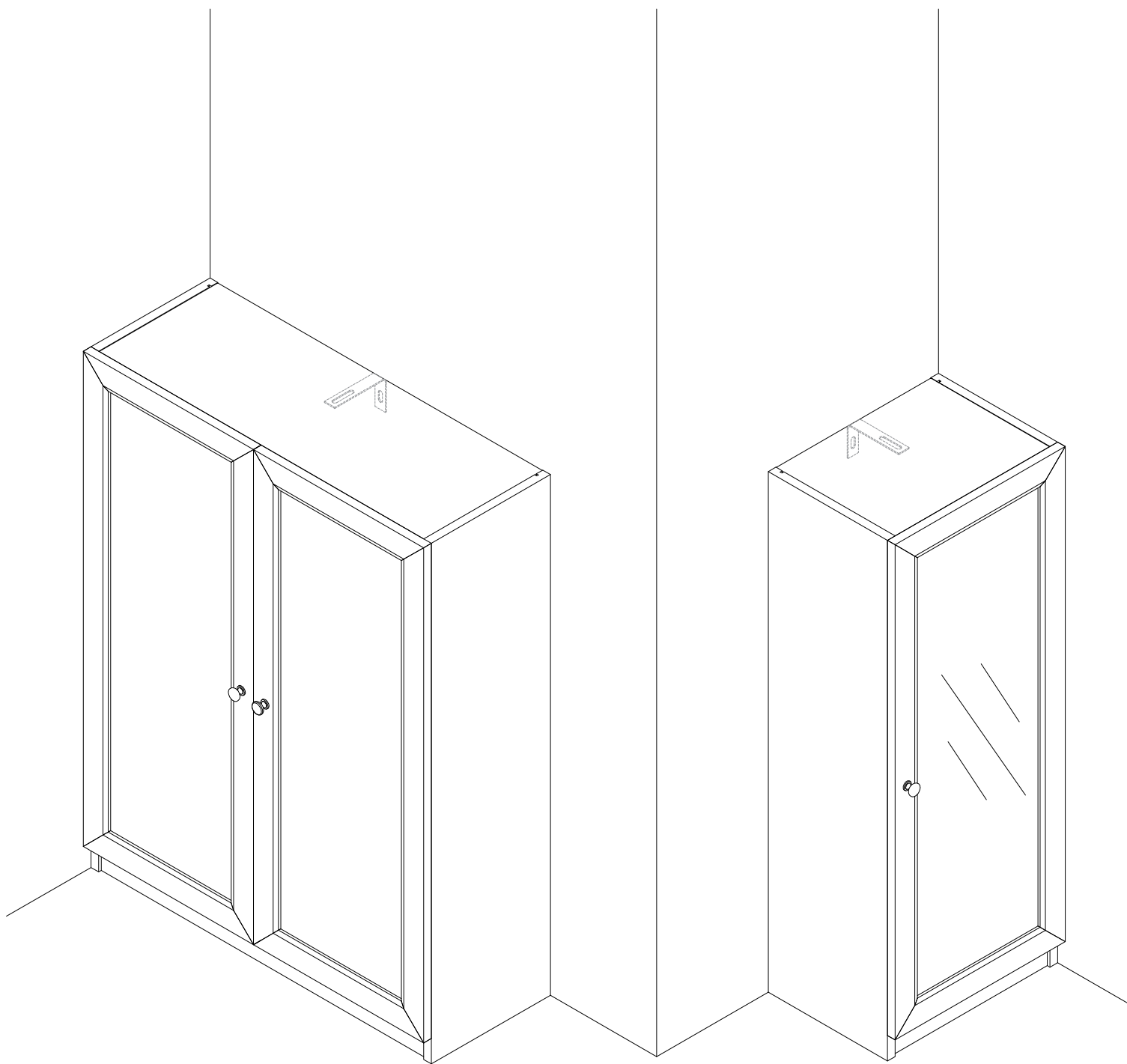
The Door Panel (P1) can be secured to open from either the left or right side of the Bookcase depending on your preference.  
Secure Door Panel (P1) to the left or right side of the Bookcase with 2 x Hinges (H3) using 4 x Hinge Plate Screws (H2) by tightening with the Phillips Head Screwdriver.  
Attach the Handle & Screw Set (H5) to Door Frame (P1) by tightening Screw with the Phillips Head Screwdriver.

# Step 3 - Kobi Bookcase Small Wide

You will need	
	
8 × Hinge Plate Screws (H2)	2 × Handle + Screw Set (H5)
	
Phillips Head Screwdriver	



Ensure Hinges are attached to both sets of Doors as shown in Step 2.  
Secure Door Panels (P1x2) to left & right sides of the Bookcase with 4 x Hinges (H3) using 8 x Hinge Plate Screws (H2) by tightening with the Phillips Head Screwdriver.  
Attach the Handle & Screw Set (H5x2) to Door Frames (P1x2) by tightening Screws with the Phillips Head Screwdriver.



# Job Complete!

In the interest of our environment please dispose of  
all packaging thoughtfully.